

Orange County Bikeway Loop Segment D



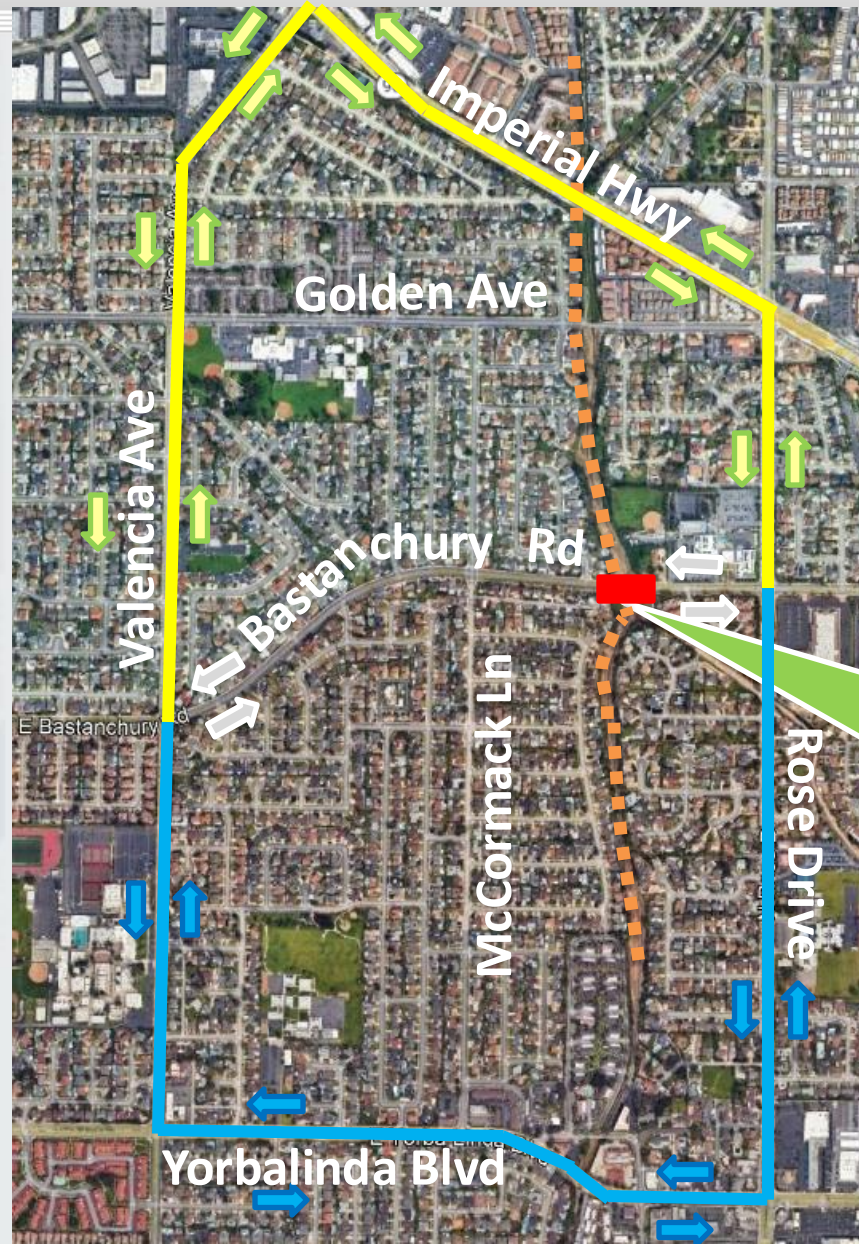
Yorba Linda Traffic Commission Meeting
April 24th , 2025

Detour Comments & Resolutions

- Avoid detour to Golden Ave due to public and safety concerns
 - Detour plan revised to detour traffic to Imperial Hwy and Yorba Linda Blvd
- Additional PCMS Signage & revised message on sign to better communicate closure/ detour
 - Additional PCMS sign locations have been identified and provided for clarity
 - Messaging revised to clearly communicate upcoming closure
- Additional duration requested for advanced placement PCMS signs
 - Recommend maintaining 14 days for relevant and avoid fatigue



Phase 1 – Detour Route (9 Working Days)

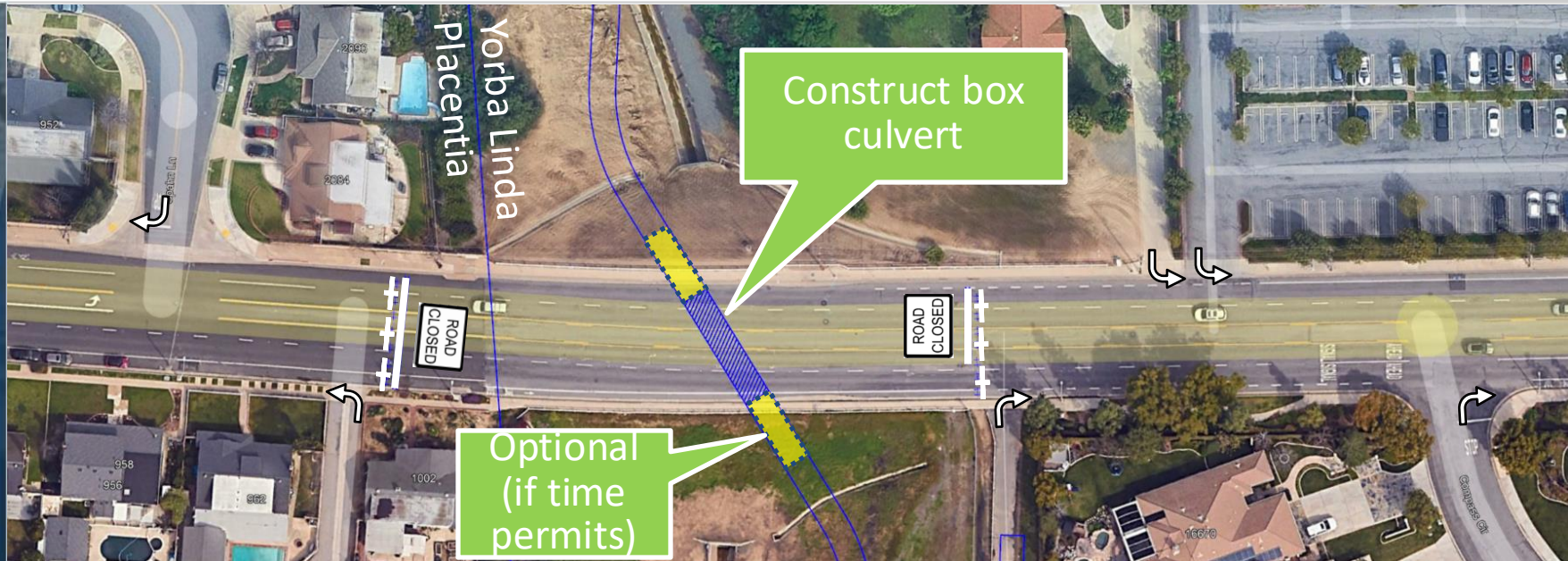


Traffic Handling Comments & Resolutions

- Check signage placement at private driveways to avoid encroachment for No Right/Left Turn movements
 - Plans updated to show signage placement outside of private driveways



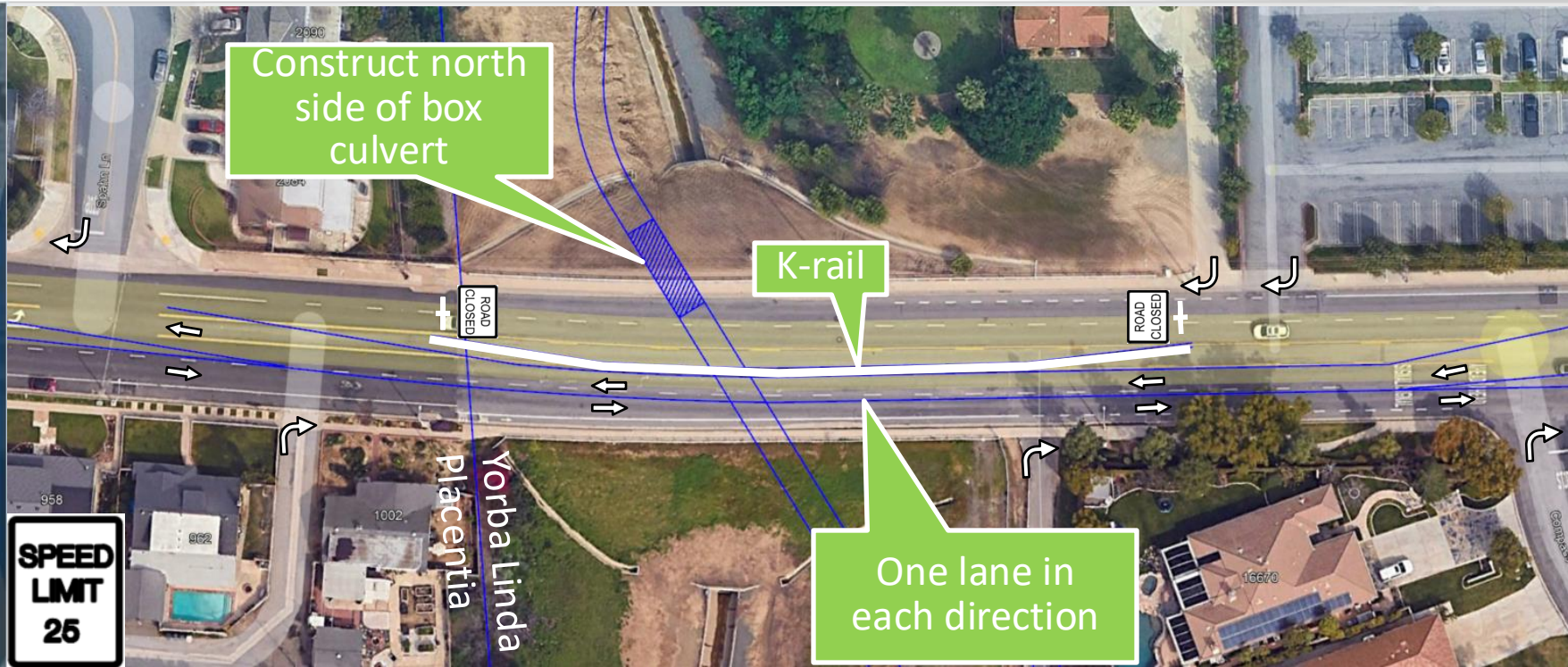
Phase 1 – Full Closure (9 Working Days)



- Contractor Requirements
 - Full closure only allowed during summer, between June 15th and August 15th
 - Full closure completed in 9 days or less, 8 hour working days; Liquidated damages
 - Work limited to Monday to Saturday, no Sunday work
 - **No right turn/ left turn signage confirmed**



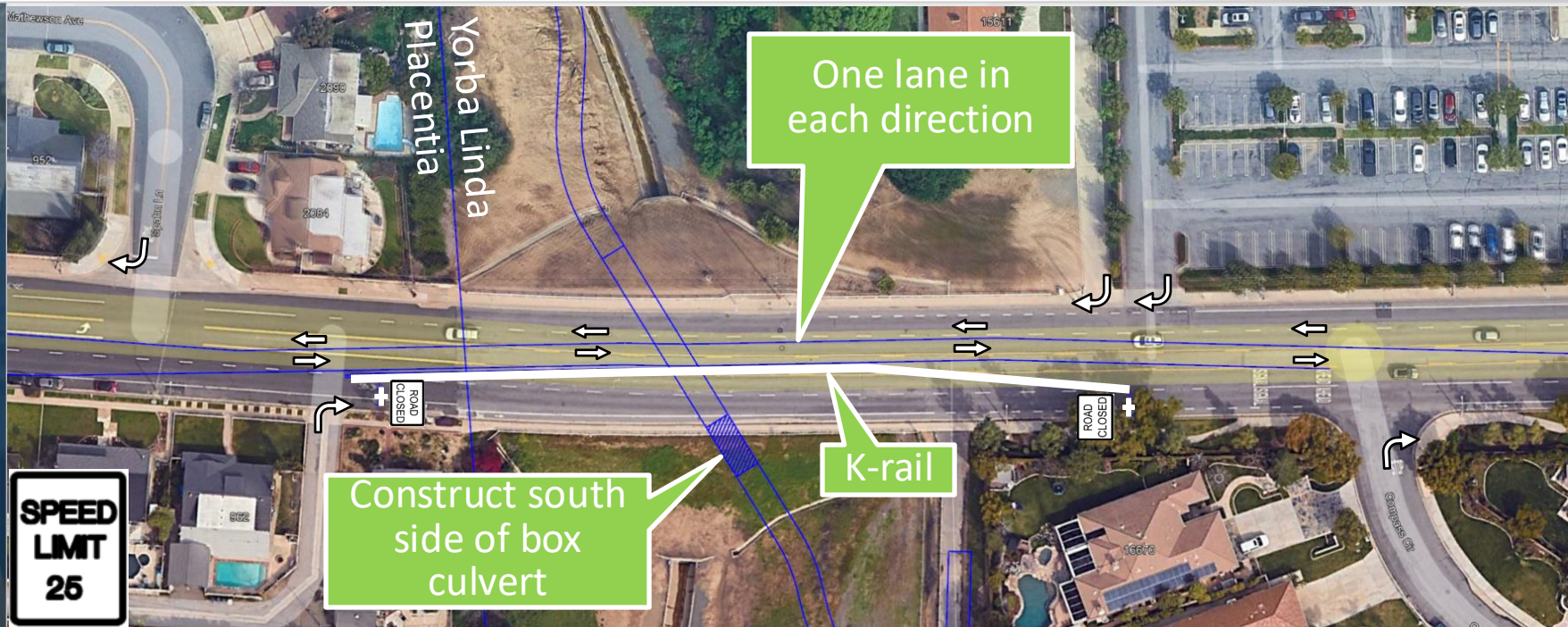
Phase 2 – Partial Closure (5 Working Days)



- Contractor Requirements
 - 1 lane open in each direction
 - Reduced speed limit (25 mph)
 - Local road/driveway access maintained
 - **No right turn/ left turn signage confirmed**



Phase 3 – Partial Closure (5 Working Days)



- Contractor Requirements
 - 1 lane open in each direction
 - Reduced speed limit (25 mph)
 - Local road/driveway access maintained
 - **No right turn/ left turn signage confirmed**



General Comments & Resolutions

- Vehicle Weight Limit Sign At Golden Ave Bridge was removed
 - Confirmed sign remains and was not removed.
- Temporary gates to be locked each day/ weekend
 - Confirmed contractor will lock gates.
- Closure Information To Local Community
 - Joint coordination with City and OCPW on social media with consistent graphic for detour in progress
 - Coordination with local schools/ church ongoing
 - Coordination with Google Maps/ Waze to indicate detour during closure window will be completed
 - Closure information will be indicated on flyers and will be distributed to local community



Open Discussion

Questions/Comments?



Open Discussion

SLIDES PRESENTED AT TRAFFIC
COMMISSION MEETING
03/27/2025



Project Overview



What is the OC Loop?

- 66 miles of regional bikeway along existing channel right of ways
- ~88% complete
- **OC Loop Segment D** is a 0.67 miles gap closure
- Traverses through cities of Yorba Linda, Placentia and Brea; 0.12 miles within Yorba Linda
- More information at:

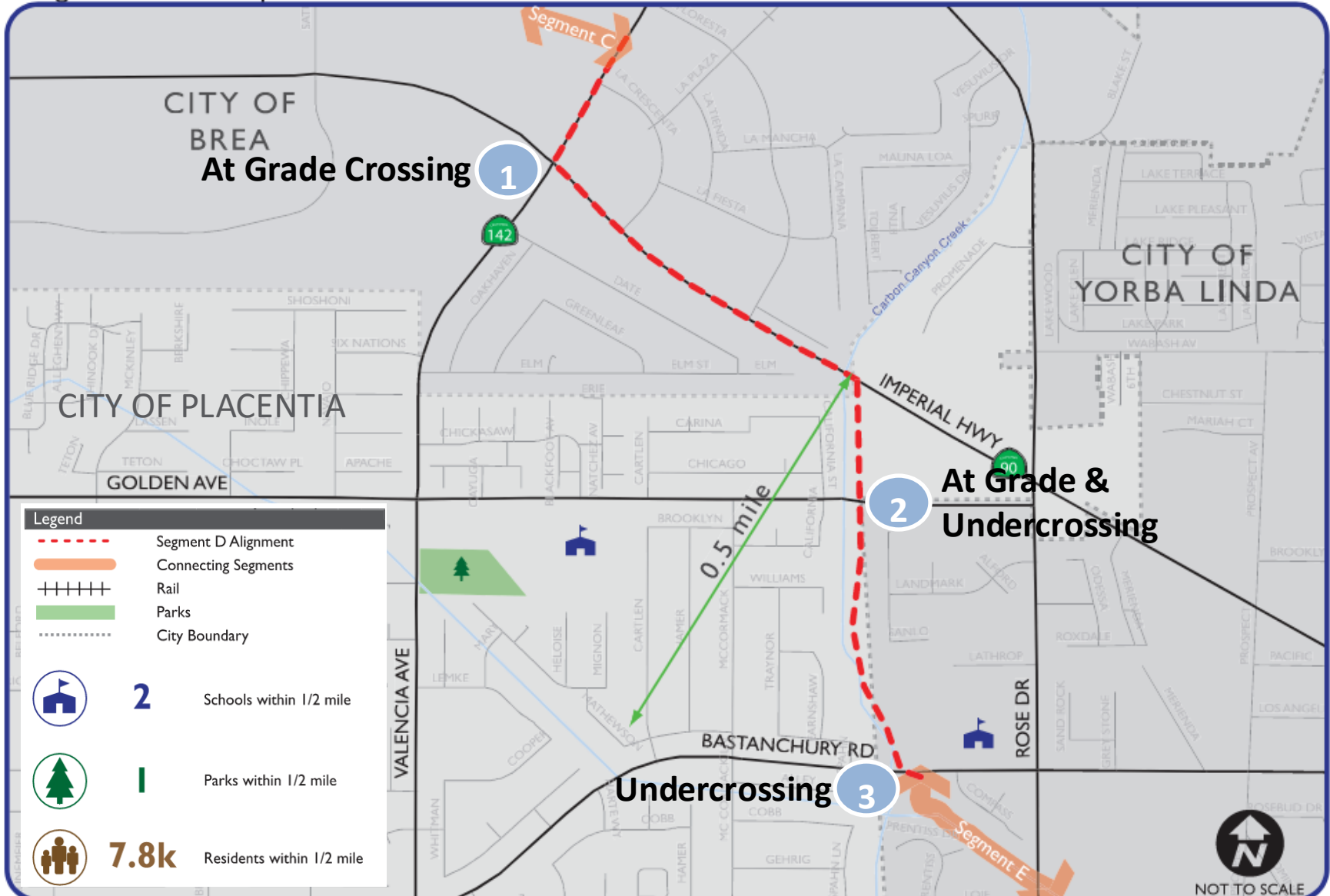


octa.net/ocloop



Project Background

Segment Detail Map

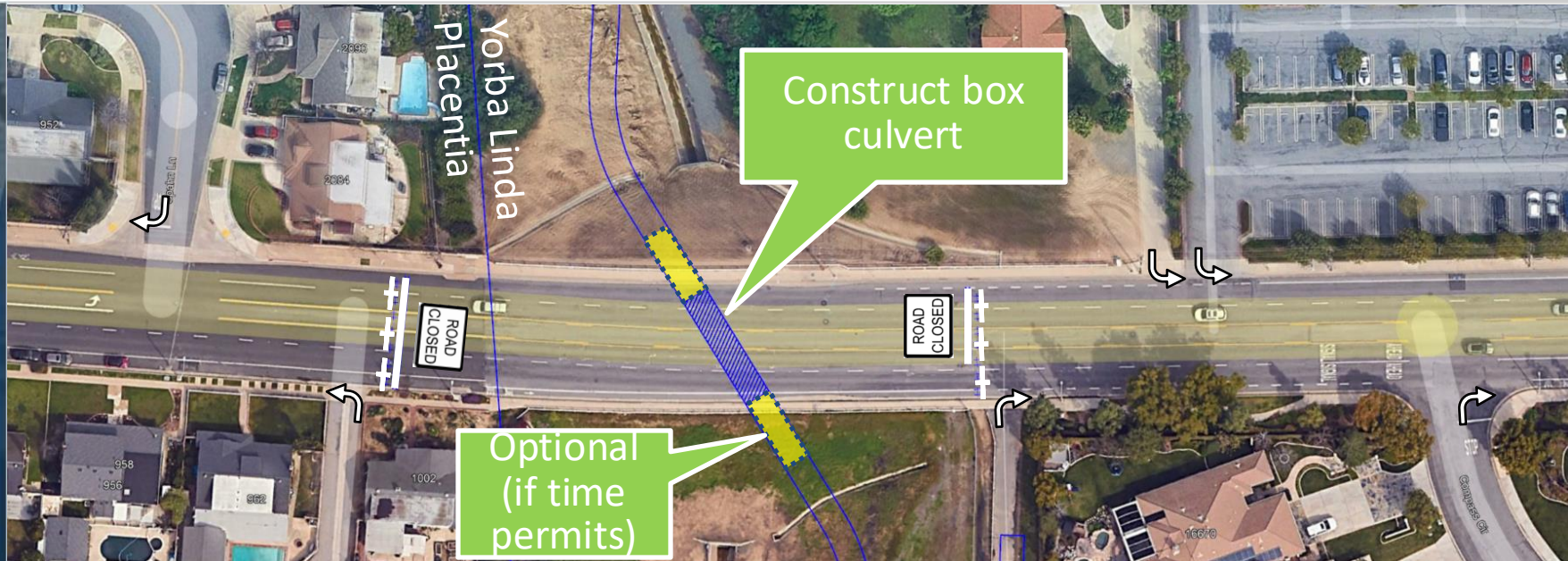


Scope of Work – Bastanchury Road

- **Order of Work for Bastanchury Construction**
 - Install Traffic Control
 - Removals (Utilities/Pavement/Sidewalk)
 - Excavate for Box Culvert
 - Install Precast Box Culvert
 - Place Fill
 - Install 8" Water Line
 - Final Grading
 - Reinstall Pavement / Sidewalk
 - Remove Traffic Control



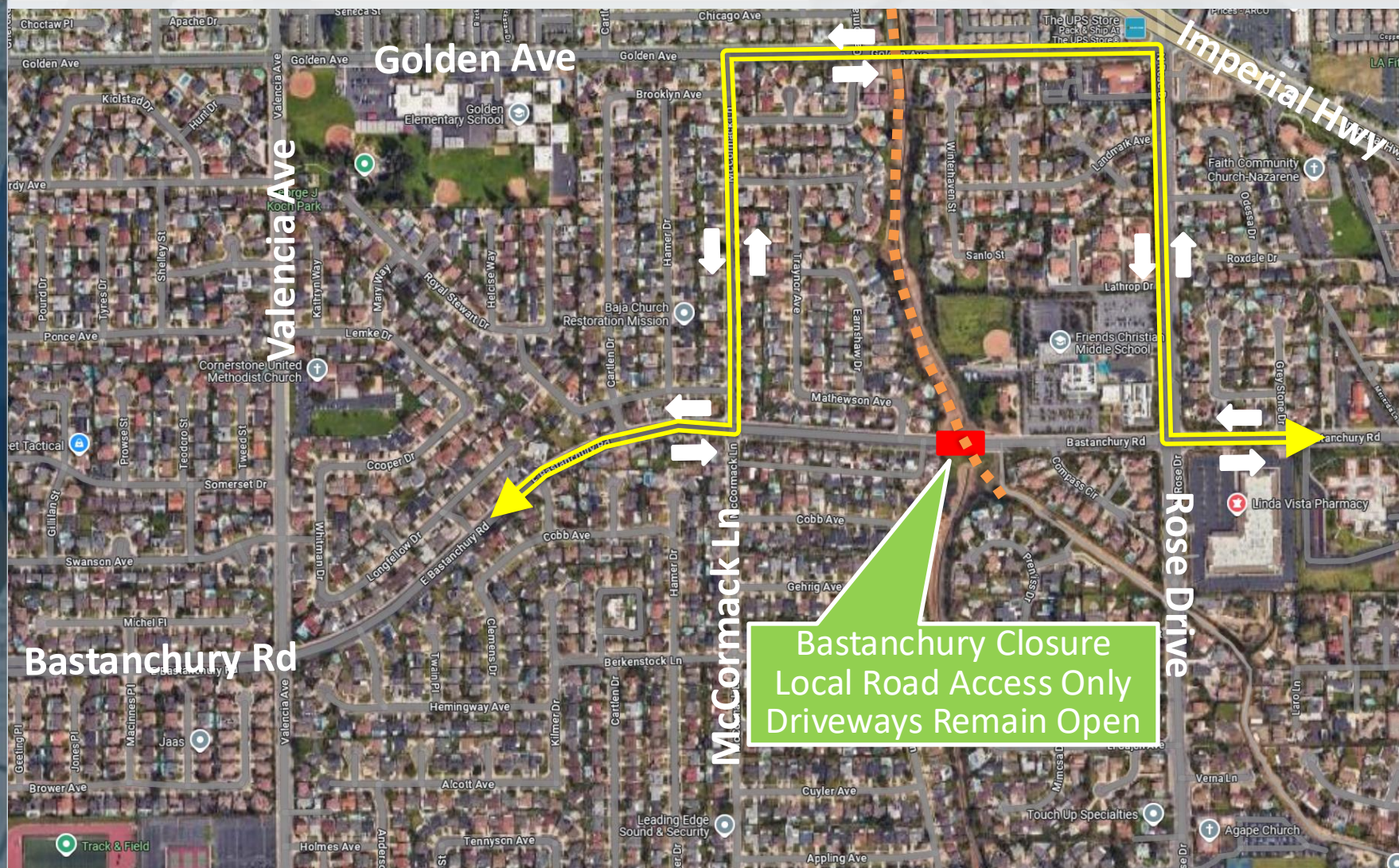
Phase 1 – Full Closure (9 Wdays)



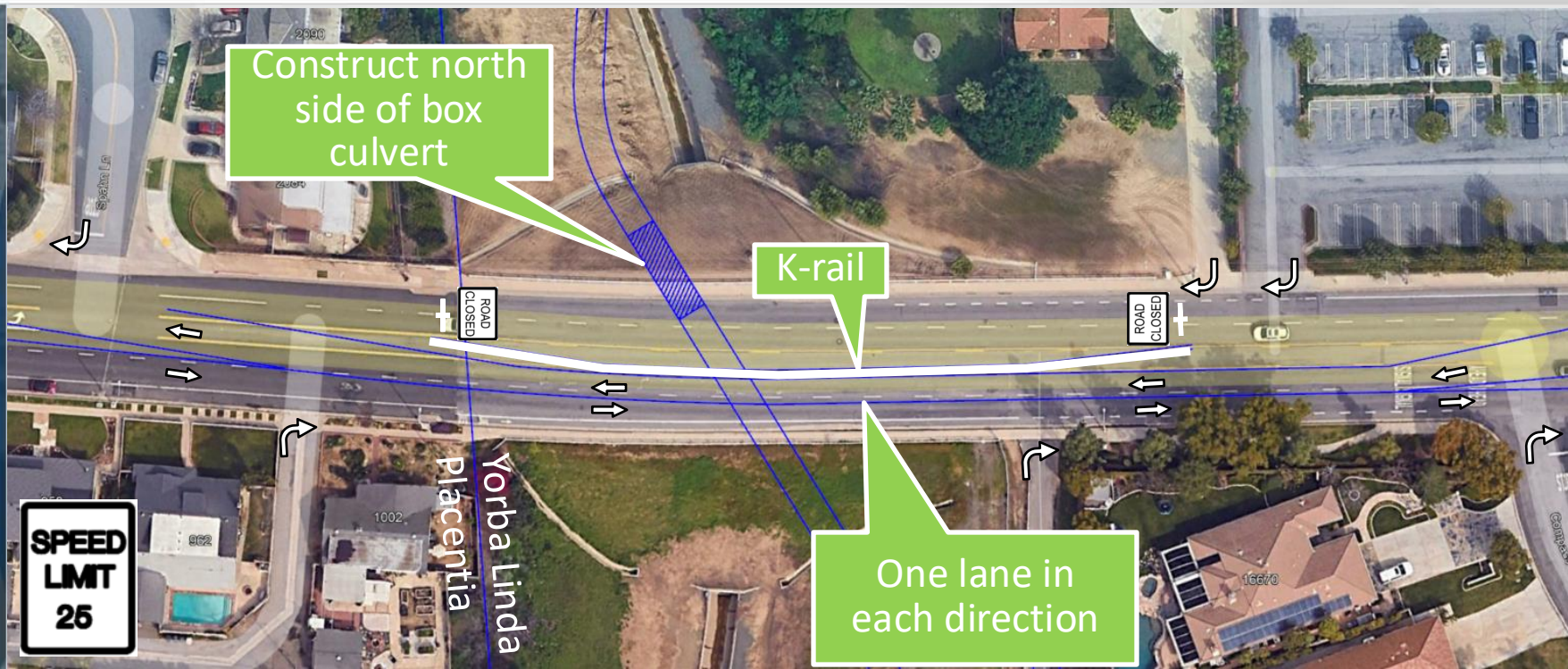
- Contractor Requirements
 - Full closure only allowed during summer, between June 15th and August 15th
 - Full closure completed in 9 days or less, 8 hour working days; Liquidated damages
 - Work limited to Monday to Saturday, no Sunday work



Phase 1 – Detour Route (9 Wdays)



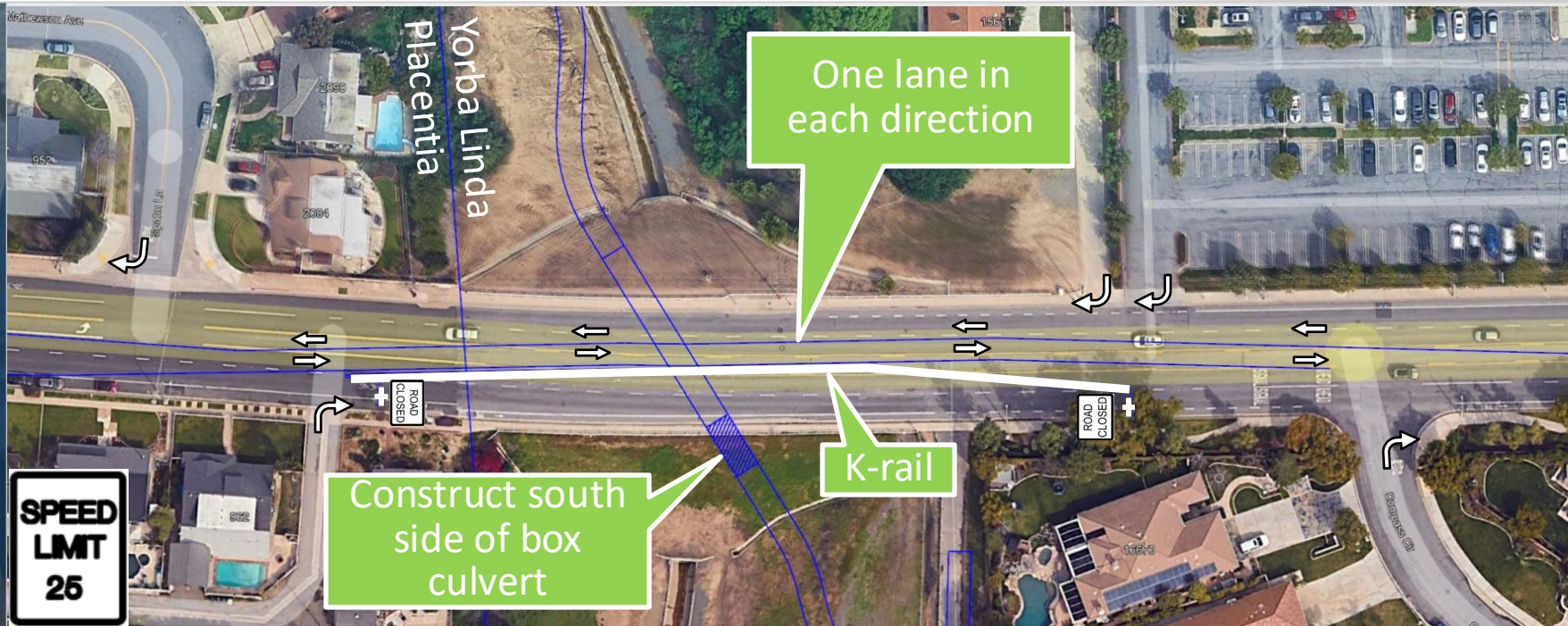
Phase 2 – Partial Closure (5 Wdays)



- Contractor Requirements
 - 1 lane open in each direction
 - Reduced speed limit (25 mph)
 - Local road/driveway access maintained



Phase 3 – Partial Closure (5 Wdays)



- Contractor Requirements
 - 1 lane open in each direction
 - Reduced speed limit (25 mph)
 - Local road/driveway access maintained

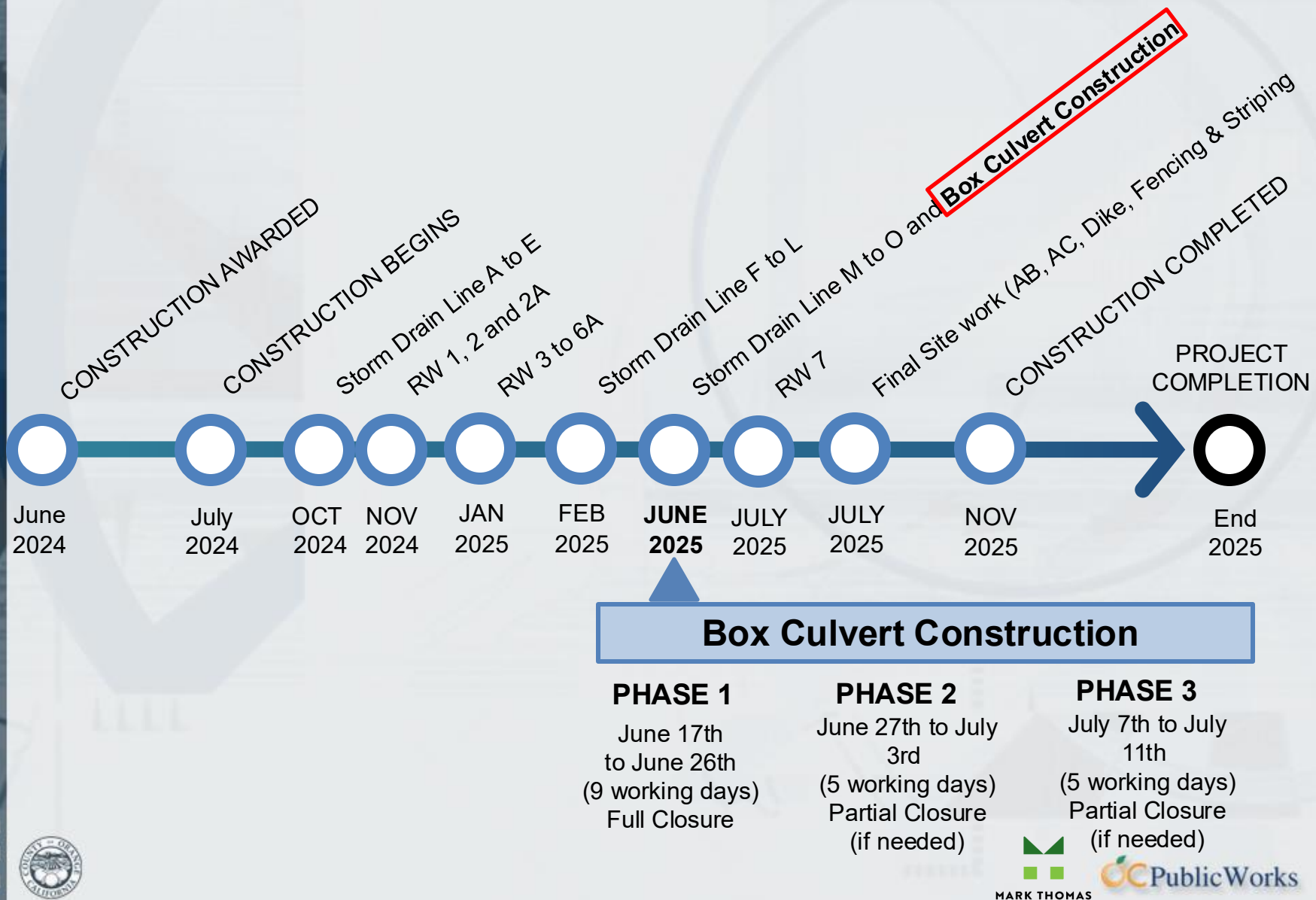


Outreach Efforts

- Portable Changeable Message Signs With road closure notifications will be placed two weeks prior to closure
- Full road closure will occur during summer break
 - Rose Drive Elementary School not expected to be in summer session
- City of Yorba Linda will coordinate full roadway closure with Rose Drive Elementary for summer school attendees, if announced after 04/21/2025
- City of Yorba Linda has sent Traffic Commission notifications to affected residents
- City posted social media & website posting for residents to attend the Traffic Commission Meeting, if interested
- Council provided weekly updates from City Manager
- County will distribute flyers and notify residents & businesses at least two weeks prior to closure



Project Schedule



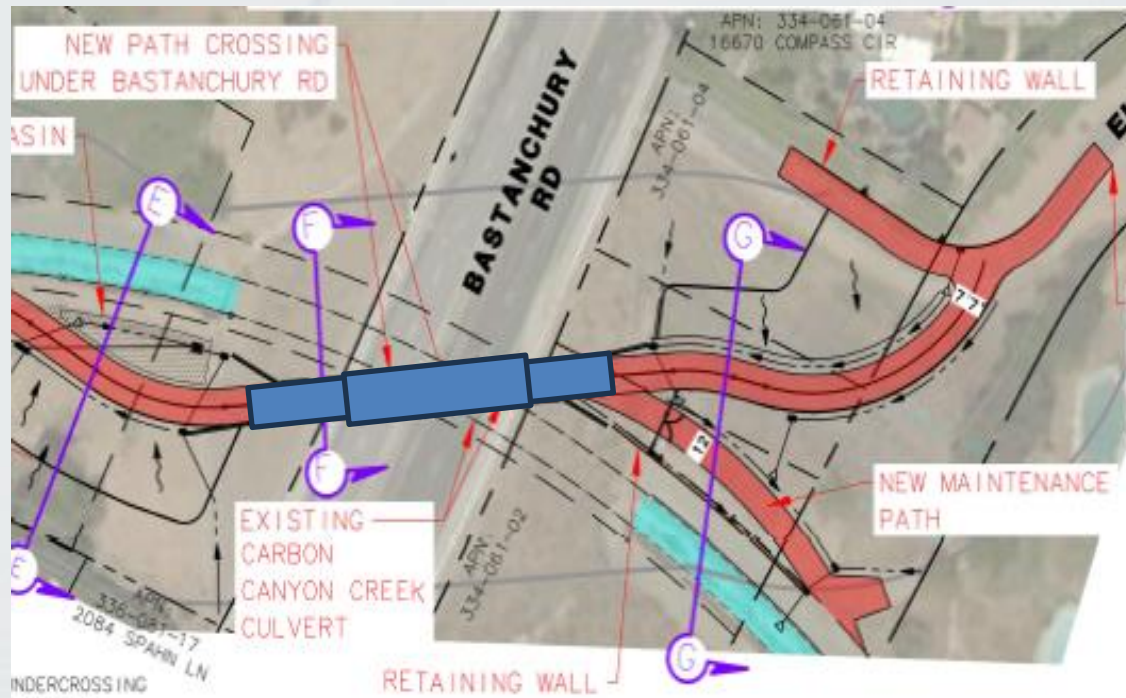
Miscellaneous Project Information

- Contract Award Date: July 29th, 2024
- Anticipated Completion Date: November 2025
- Contractor: Blue Iron Construction
- Total Project Cost: \$11,880,204.78
- All Project Improvements within Yorba Linda to be maintained by OC Parks

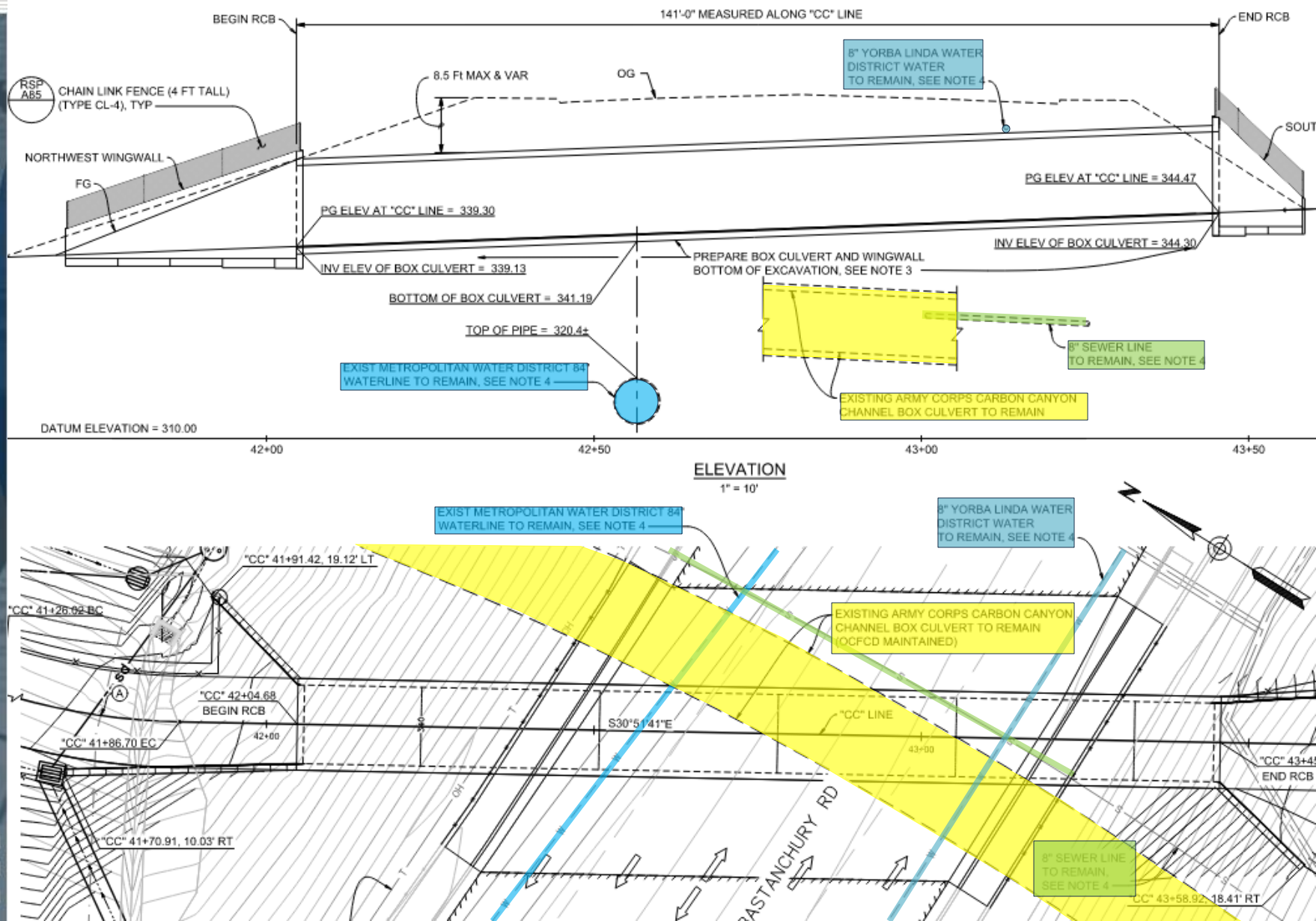


Summary of Partial and Full Closures for Bastanchury

- Phase 1 (full closure)
 - Middle portion of box culvert (9 wdays)
- Phase 2 (partial)
 - North side of box culvert (5 wdays)
- Phase 3 (partial)
 - South side of box culvert (5 wdays)



Bastanchury Undercrossing w/Utils



Vehicle Weight Limits Sign On Golden Ave

