

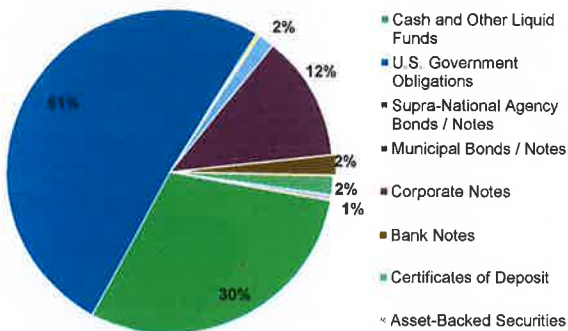
Treasurer's Report
Summary of Investment Portfolio Holdings
December 31, 2024

Investment	Purpose	Yield to Maturity	Original Cost	Amortized Cost	Market Value
Cash and Money Market Accounts					
BMO ¹	City Operations	0.45%	\$ 5,391,076.35	\$ 5,391,076.35	\$ 5,391,076.35
US Bank ²	Investment Safekeeping	4.26%	158,923.81	158,923.81	158,923.81
Petty Cash	Petty Cash at City Facilities	0.00%	12,470.00	12,470.00	12,470.00
Total Cash and Money Market Accounts		0.56%	5,562,470.16	5,562,470.16	5,562,470.16
Local Agency Investment Fund (LAIF)		4.43%	3,984,714.95	3,984,714.95	3,984,714.95
California Asset Management Program (CAMP)		4.73%	12,150,178.77	12,150,178.77	12,150,178.77
Managed Investment Portfolio					
U.S. Treasury Bonds / Notes	Medium-Term Investment	3.17%	26,496,231.86	26,678,400.76	26,144,666.70
U.S. Government Agency Securities	Medium-Term Investment	3.36%	349,287.90	370,819.07	362,668.02
U.S. Government Agency Collateralized Mortgage	Medium-Term Investment	4.72%	9,812,192.16	9,874,330.16	9,879,915.33
Supra-National Agency Bonds / Notes	Medium-Term Investment	4.49%	234,233.90	234,485.90	234,810.83
Municipal Bonds / Notes	Medium-Term Investment	1.40%	1,190,919.10	1,190,095.91	1,169,955.02
Corporate Notes	Medium-Term Investment	4.60%	8,994,504.35	9,034,906.00	9,028,862.81
Bank Note	Medium-Term Investment	5.44%	1,463,164.90	1,464,295.59	1,483,478.37
Certificates of Deposit	Medium-Term Investment	5.13%	1,410,000.00	1,410,000.00	1,430,258.95
Asset-Backed Securities	Medium-Term Investment	3.45%	390,909.65	390,922.38	389,297.43
Total Managed Investment Portfolio		3.83%	\$ 50,341,443.82	\$ 50,648,255.77	\$ 50,123,913.46
Total Pooled Investment Portfolio		3.76%	\$ 72,038,807.70	\$ 72,345,619.65	\$ 71,821,277.34
Fiscal Agent Money Market Accounts					
U.S. Bank Federated Government Obligation Fund	Successor Agency Bond Funds	4.32%	1,102.05	1,102.05	1,102.05
U.S. Bank Federated Government Obligation Fund	YL Redevelopment 1998 Bond Funds	3.92%	4,152.70	4,152.70	4,152.70
U.S. Bank Federated Government Obligation Fund	Library Bond Funds	4.32%	1,614.83	1,614.83	1,614.83
Total Fiscal Agent Money Market Accounts		4.08%	6,869.58	6,869.58	6,869.58
Total Cash and Investments			\$ 72,045,677.28	\$ 72,352,489.23	\$ 71,828,146.92

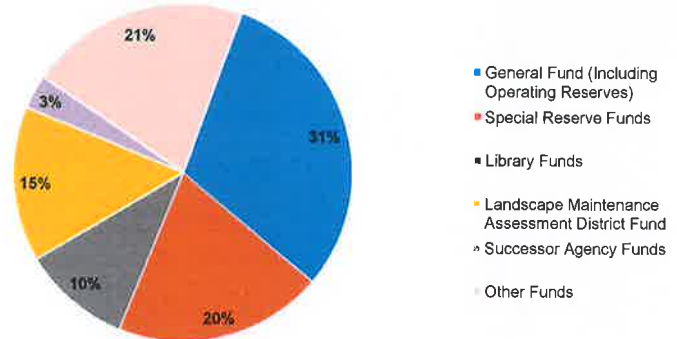
¹ Interest earned on the City's deposits with BMO is limited to the total amount of banking fees charged each month.

² This is the balance of the funds currently under management by the City's external investment advisor, PFM, that are not currently invested.

Composition of Pooled Investment Portfolio



Pooled Investment Portfolio Balances by Fund



It has been verified that the City's investment portfolio is in conformity with the City's investment policy. This Treasurer's Report accurately reflects all cash and investments of the City as of the month-ended date shown above. Cash on hand is projected to be adequate to fund all anticipated expenditures for the next six months.

Verified By:

Sophia Leung, Financial Services Manager

Approved By:

Sunny Han, Finance Director / City Treasurer

Cash Balances by Fund ¹
December 31, 2024

Fund	Beginning Balance	Receipts	Disbursements	Ending Balance
General Fund and Special Reserve Funds				
101 General Fund (Including Operating Reserves)	\$ 18,543,024.73	\$ 6,210,634.75	\$ (3,316,430.94)	\$ 21,437,228.54
102 Special Reserve Funds	14,518,799.76	-	-	14,518,799.76
104 Donation	635,442.07	-	-	635,442.07
Total General Fund and Special Reserve Funds	33,697,266.56	6,210,634.75	(3,316,430.94)	36,591,470.37
Library Special Revenue Funds				
202 Library Fund	4,254,459.75	2,529,431.34	(767,913.17)	6,015,977.92
203 Library Reserve Fund	1,433,019.97	-	-	1,433,019.97
204 Library Bond Fund	248.03	-	-	248.03
Total Library Special Revenue Funds	5,687,727.75	2,529,431.34	(767,913.17)	7,449,245.92
Other Special Revenue Funds				
201 Landscape Maintenance Assessment District Fund	7,348,152.83	4,212,962.03	(843,218.27)	10,717,896.59
205 Affordable Housing Fund	2,443,176.72	-	(4,100.40)	2,439,076.32
206 Mortgage Assistance Program Fund	86,391.94	-	-	86,391.94
207 Miscellaneous Grants Fund	(4,246,179.85)	-	-	(4,246,179.85)
208 Community Development Block Grant (CDBG) Fund	60,164.02	12,644.54	(5,000.00)	67,808.56
209 Air Quality Management District (AQMD) Fund	581,236.78	22,471.04	-	603,707.82
210 Public, Educational, and Government Access (PEG) Fund	304,337.03	-	(3,085.63)	301,251.40
211 Gas Tax Fund	3,100,351.27	175,782.10	-	3,276,133.37
212 Measure M Fund	516,945.49	-	-	516,945.49
213 Road Maintenance and Rehabilitation Fund	817,474.59	-	-	817,474.59
214 Traffic Safety Fund	13,866.30	3,541.06	-	17,407.36
215 Citizens' Option for Public Safety (COPS) Fund	162,319.26	-	-	162,319.26
216 SB-2 Fund	(292,297.00)	-	-	(292,297.00)
218 ARPA Fund	-	-	-	-
Total Other Special Revenue Funds	10,895,939.38	4,427,400.77	(855,404.30)	14,467,935.85
Capital Projects Funds				
401 Capital Improvements Fund	(1,981,683.37)	-	(1,422,186.41)	(3,403,869.78)
402 Park In-Lieu Fund	1,490,300.91	7,502.60	-	1,497,803.51
403 Master Plan of Drainage Fund	5,941,232.71	-	-	5,941,232.71
404 Traffic Mitigation Fund	466,324.73	-	-	466,324.73
405 Traffic Signal Improvement Fund	1,075,472.00	-	-	1,075,472.00
406 Parking In-Lieu Fund	30,129.51	-	-	30,129.51
407 Lighting & Signal Projects	682,323.86	-	-	682,323.86
Total Capital Projects Funds	7,704,100.35	7,502.60	(1,422,186.41)	6,289,416.54
Enterprise Funds				
501 Black Gold Golf Course Fund	2,384,579.55	1,024,289.60	(931,058.66)	2,477,810.49
503 BGGC Capital Reserve Fund	956,542.07	-	-	956,542.07
Total Enterprise Funds	3,341,121.62	1,024,289.60	(931,058.66)	3,434,352.56
Agency Funds				
701 Miscellaneous Trust & Agency Funds	1,151,040.90	18,320.84	(41,500.02)	1,127,861.72
702 Successor Agency Funds	2,369,171.75	18.18	-	2,369,189.93
Total Agency Funds	3,520,212.65	18,339.02	(41,500.02)	3,497,051.65
Investment Earnings and Amortization Pending Distribution ²	480,866.08	184,211.59	(42,061.33)	623,016.34
Total Cash - All Funds	\$ 65,327,234.39	\$ 14,401,809.67	\$ (7,376,554.83)	\$ 72,352,489.23

¹ The cash balances by fund shown in the table above are preliminary and may not reflect adjusting journal entries.

² Investment earnings and amortizations are recorded in a holding account monthly, but are allocated to the City's various Funds quarterly.



Customer Service
PO Box 11813
Harrisburg, PA 17108-1813

ACCOUNT STATEMENT

For the Month Ending

December 31, 2024

CITY OF YORBA LINDA

Client Management Team

Richard Babbe, CCM

Senior Managing Consultant
633 W 5th St., 25th Floor
Los Angeles, CA 90071
949-230-6896
babber@pfmam.com

Giancarlo Morales-Belletti

Portfolio Manager
213 Market Street
Harrisburg, PA 17101-2141
(717)-232-2723
moralesbellettig@pfmam.com

Rachael Miller

Client Consultant
213 Market Street
Harrisburg, PA 17101-2141
717-232-2723
millerr@pfmam.com

Contents

- Cover/Disclosures
- Summary Statement
- Individual Accounts

Accounts included in Statement

97480000	CITY OF YORBA LINDA
----------	---------------------

CITY OF YORBA LINDA
MS. SOPHIA LEUNG
4845 CASE LOMA AVENUE
YORBA LINDA, CA 92885

Important Disclosures

Important Disclosures

This statement is for general information purposes only and is not intended to provide specific advice or recommendations. PFM Asset Management ("PFMAM") is a division of U.S. Bancorp Asset Management, Inc. ("USBAM"), a SEC-registered investment adviser. USBAM is direct subsidiary of U.S. Bank National Association ("U.S. Bank") and an indirect subsidiary of U.S. Bancorp. U.S. Bank is not responsible for and does not guarantee the products, services or performance of PFMAM. PFMAM maintains a written disclosure statement of our background and business experience. If you would like to receive a copy of our current disclosure statement, please contact Service Operations at the address below.

Proxy Voting PFMAM does not normally receive proxies to vote on behalf of its clients. However, it does on occasion receive consent requests. In the event a consent request is received the portfolio manager contacts the client and then proceeds according to their instructions. PFMAM's Proxy Voting Policy is available upon request by contacting Service Operations at the address below.

Questions About an Account PFMAM's monthly statement is intended to detail our investment advisory activity as well as the activity of any accounts held by clients in pools that are managed by PFMAM. The custodian bank maintains the control of assets and executes (i.e., settles) all investment transactions. The custodian statement is the official record of security and cash holdings and transactions. PFMAM recognizes that clients may use these reports to facilitate record keeping and that the custodian bank statement and the PFMAM statement should be reconciled and differences resolved. Many custodians use a settlement date basis which may result in the need to reconcile due to a timing difference.

Account Control PFMAM does not have the authority to withdraw funds from or deposit funds to the custodian outside the scope of services provided by PFMAM. Our clients retain responsibility for their internal accounting policies; implementing and enforcing internal controls and generating ledger entries or otherwise recording transactions.

Market Value Generally, PFMAM's market prices are derived from closing bid prices as of the last business day of the month as supplied by ICE Data Services. There may be differences in the values shown for investments due to accrued but uncollected income and the use of differing valuation sources and methods. Non-negotiable FDIC-insured bank certificates of deposit are priced at par. Although PFMAM believes the prices to be reliable, the values of the securities may not represent the prices at which the securities could have been bought or sold. Explanation of the valuation methods for a registered investment company or local government investment program is contained in the appropriate fund offering documentation or information statement.

Amortized Cost The original cost of the principal of the security is adjusted for the amount of the periodic reduction of any discount or premium from the purchase date until the date of the report. Discount or premium with respect to short term securities (those with less than one year to maturity at time of issuance) is amortized on a straightline basis. Such discount or premium with respect to longer term securities is amortized using the constant yield basis.

Tax Reporting Cost data and realized gains / losses are provided for informational purposes only. Please review for accuracy and consult your tax advisor to determine the tax consequences of your security transactions. PFMAM does not report such information to the IRS or other taxing authorities and is not responsible for the accuracy of such information that may be required to be reported to federal, state or other taxing authorities.

Financial Situation In order to better serve you, PFMAM should be promptly notified of any material change in your investment objective or financial situation.

Callable Securities Securities subject to redemption prior to maturity may be redeemed in whole or in part before maturity, which could affect the yield represented.

Portfolio The securities in this portfolio, including shares of mutual funds, are not guaranteed or otherwise protected by PFMAM, the FDIC (except for certain non-negotiable certificates of deposit) or any government agency. Investment in securities involves risks, including the possible loss of the amount invested. Actual settlement values, accrued interest, and amortized cost amounts may vary for securities subject to an adjustable interest rate or subject to principal paydowns. Any changes to the values shown may be reflected within the next monthly statement's beginning values.

Rating Information provided for ratings is based upon a good faith inquiry of selected sources, but its accuracy and completeness cannot be guaranteed.

Shares of some local government investment programs and TERM funds are distributed by representatives of USBAM's affiliate, U.S. Bancorp Investments, Inc. which is registered with the SEC as a broker/dealer and is a member of the Financial Industry Regulatory Authority ("FINRA") and the Municipal Securities Rulemaking Board ("MSRB"). You may reach the FINRA by calling the FINRA Hotline at 1-800-289-9999 or at the FINRA website address

<https://www.finra.org/investors/investor-contacts>. A brochure describing the FINRA Regulation Public Disclosure Program is also available from FINRA upon request.

Key Terms and Definitions

Dividends on local government investment program funds consist of interest earned, plus any discount ratably amortized to the date of maturity, plus all realized gains and losses on the sale of securities prior to maturity, less ratably amortization of any premium and all accrued expenses to the fund. Dividends are accrued daily and may be paid either monthly or quarterly. The monthly earnings on this statement represent the estimated dividend accrued for the month for any program that distributes earnings on a quarterly basis. There is no guarantee that the estimated amount will be paid on the actual distribution date.

Current Yield is the net change, exclusive of capital changes and income other than investment income, in the value of a hypothetical fund account with a balance of one share over the seven-day base period including the statement date, expressed as a percentage of the value of one share (normally \$1.00 per share) at the beginning of the seven-day period. This resulting net change in account value is then annualized by multiplying it by 365 and dividing the result by 7. The yields quoted should not be considered a representation of the yield of the fund in the future, since the yield is not fixed.

Average maturity represents the average maturity of all securities and investments of a portfolio, determined by multiplying the par or principal value of each security or investment by its maturity (days or years), summing the products, and dividing the sum by the total principal value of the portfolio. The stated maturity date of mortgage backed or callable securities are used in this statement. However the actual maturity of these securities could vary depending on the level or prepayments on the underlying mortgages or whether a callable security has or is still able to be called.

Monthly distribution yield represents the net change in the value of one share (normally \$1.00 per share) resulting from all dividends declared during the month by a fund expressed as a percentage of the value of one share at the beginning of the month. This resulting net change is then annualized by multiplying it by 365 and dividing it by the number of calendar days in the month.

YTM at Cost The yield to maturity at cost is the expected rate of return, based on the original cost, the annual interest receipts, maturity value and the time period from purchase date to maturity, stated as a percentage, on an annualized basis.

YTM at Market The yield to maturity at market is the rate of return, based on the current market value, the annual interest receipts, maturity value and the time period remaining until maturity, stated as a percentage, on an annualized basis.

Managed Account A portfolio of investments managed discretely by PFMAM according to the client's specific investment policy and requirements. The investments are directly owned by the client and held by the client's custodian.

Unsettled Trade A trade which has been executed however the final consummation of the security transaction and payment has not yet taken place.

In August 2024, PFMAM converted its portfolio accounting system from FIS Investment Accounting Manager to SS&C PORTIA. The new system has recalculated the amortized cost and yield to maturity at cost of each security, based upon original cost and settlement date. Some securities, including some factored securities and previously exchanged securities, are now on a modified amortization schedule as compared with that of the past. Where transfers have occurred between your portfolios we have returned their settlement dates to the settlement dates of the original purchases in order to minimize any impact to their amortization schedules.

Please review the detail pages of this statement carefully. If you think your statement is wrong, missing account information, or if you need more information about a transaction, please contact PFMAM within 60 days of receipt. If you have other concerns or questions regarding your account, or to request an updated copy of PFMAM's current disclosure statement, please contact a member of your client management team at PFMAM Service Operations at the address below.

PFM Asset Management
Attn: Service Operations
213 Market Street
Harrisburg, PA 17101

NOT FDIC INSURED

NO BANK GUARANTEE

MAY LOSE VALUE

Managed Account Summary Statement

For the Month Ending **December 31, 2024**

CITY OF YORBA LINDA - 97480000

Transaction Summary - Managed Account

Opening Market Value	\$49,716,294.33
Maturities/Calls	(44,026.73)5
Principal Dispositions	(1,677,217.28)5
Principal Acquisitions	2,278,447.653
Unsettled Trades	0.00
Change in Current Value	(149,584.51)
Closing Market Value	\$50,123,913.46

Cash Transactions Summary - Managed Account

Maturities/Calls	0.00
Sale Proceeds	1,683,080.88
Coupon/Interest/Dividend Income	89,743.43
Principal Payments	44,026.73
Security Purchases	(2,284,443.66)
Net Cash Contribution	US Bank Fees - (444.95)
Reconciling Transactions	0.00

Earnings Reconciliation (Cash Basis) - Managed Account

Interest/Dividends/Coupons Received	95,607.036
Less Purchased Interest Related to Interest/Coupons	(5,996.01)4
Plus Net Realized Gains/Losses	(19,268.97)
Total Cash Basis Earnings	\$70,342.05

Cash Balance

Closing Cash Balance 7 **\$158,923.81**

Earnings Reconciliation (Accrual Basis)

Total

Ending Amortized Value of Securities	50,648,255.771
Ending Accrued Interest	345,005.042
Plus Proceeds from Sales	1,683,080.88
Plus Proceeds of Maturities/Calls/Principal Payments	44,026.73
Plus Coupons/Dividends Received	89,743.43
Less Cost of New Purchases	(2,284,443.66)
Less Beginning Amortized Value of Securities	(50,072,901.01)8
Less Beginning Accrued Interest	(302,943.71)9
Total Accrual Basis Earnings	\$149,823.47

Portfolio Summary and Statistics

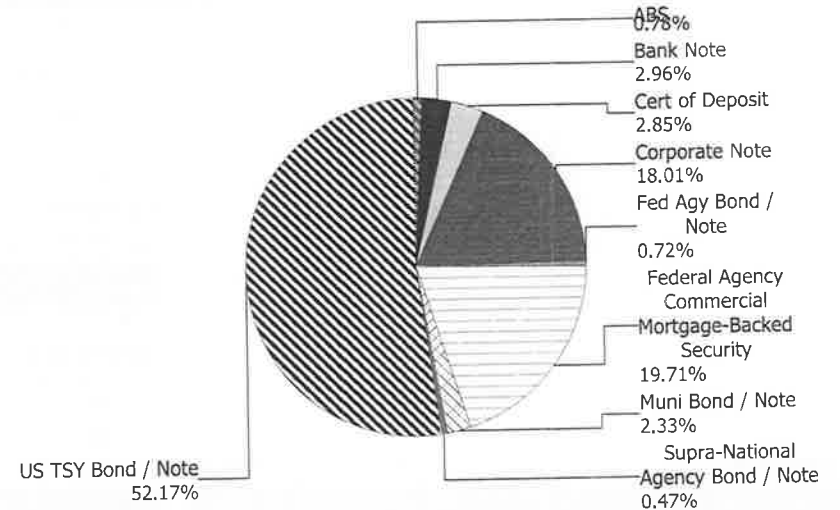
For the Month Ending **December 31, 2024**

CITY OF YORBA LINDA - 97480000

Account Summary

Description	Par Value	Market Value	Percent
U.S. Treasury Bond / Note	27,500,000.00	26,144,666.70	52.17
Supra-National Agency Bond / Note	235,000.00	234,810.83	0.47
Municipal Bond / Note	1,190,000.00	1,169,955.02	2.33
Federal Agency Commercial Mortgage-Backed Security	9,993,486.63	9,879,915.33	19.71
Federal Agency Bond / Note	390,000.00	362,668.02	0.72
Corporate Note	9,090,000.00	9,028,862.81	18.01
Certificate of Deposit	1,410,000.00	1,430,258.95	2.85
Bank Note	1,470,000.00	1,483,478.37	2.96
Asset-Backed Security	390,931.47	389,297.43	0.78
Managed Account Sub-Total	51,669,418.10	50,123,913.46	100.00%
Accrued Interest		345,005.04	
Total Portfolio	51,669,418.10	50,468,918.50	

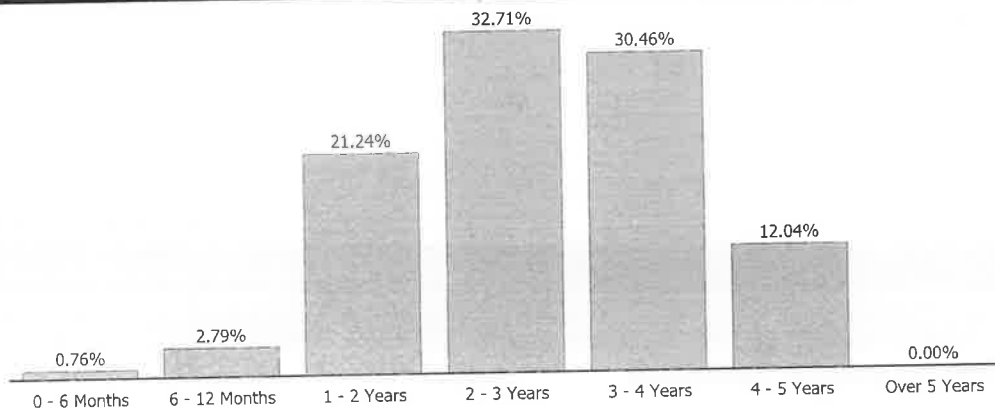
Sector Allocation



Unsettled Trades

0.00 0.00

Maturity Distribution



Characteristics

Yield to Maturity at Cost	3.82%
Yield to Maturity at Market	4.49%
Weighted Average Days to Maturity	1001

Managed Account Issuer Summary

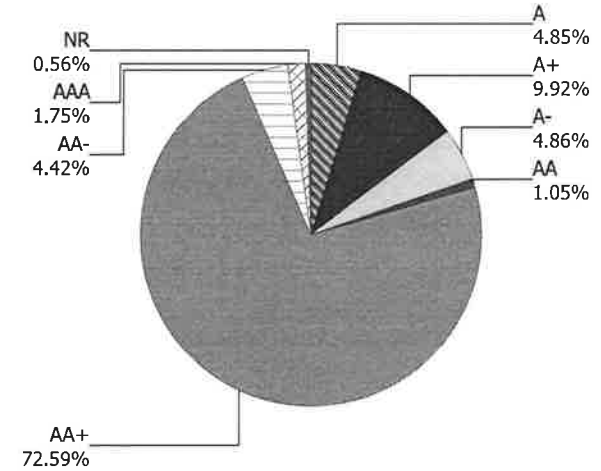
For the Month Ending **December 31, 2024**

CITY OF YORBA LINDA - 97480000

Issuer Summary

Issuer	Market Value of Holdings	Percent
Accenture PLC	164,925.50	0.33
Adobe Inc	114,524.28	0.23
American Express Co	232,175.23	0.46
Analog Devices Inc	248,491.89	0.50
ANZ Group Holdings Ltd	292,235.90	0.58
AstraZeneca PLC	145,300.44	0.29
Bank of America Corp	249,063.75	0.50
Bank of New York Mellon Corp	300,531.95	0.60
BlackRock Inc	290,637.23	0.58
BP PLC	377,762.63	0.75
Bristol-Myers Squibb Co	225,992.93	0.45
California State University	110,606.98	0.22
Capital One Financial Corp	102,271.35	0.20
CarMax Inc	244,239.27	0.49
Caterpillar Inc	283,873.39	0.57
Charles Schwab Corp	238,723.00	0.48
Cisco Systems Inc	498,342.34	0.99
Citigroup Inc	712,541.13	1.42
Cooperatieve Rabobank UA	1,208,849.10	2.41
Credit Agricole Group	363,199.09	0.72
Eli Lilly & Co	78,440.88	0.16
Federal Home Loan Banks	362,668.02	0.72
Federal Home Loan Mortgage Corp	9,439,697.99	18.83
Federal National Mortgage Association	440,217.34	0.88
Goldman Sachs Group Inc	191,483.33	0.38
Groupe BPCE	348,368.76	0.70
Home Depot Inc	370,782.92	0.74
Honda Auto Receivables Owner Trust	38,802.11	0.08
Honda Motor Co Ltd	351,207.50	0.70
Honeywell International Inc	376,337.63	0.75
International Finance Corp	234,810.83	0.47
JPMorgan Chase & Co	419,398.13	0.84

Credit Quality (S&P Ratings)



Managed Account Issuer Summary

For the Month Ending **December 31, 2024**

CITY OF YORBA LINDA - 97480000

Issuer	Market Value of Holdings	Percent
Kubota Credit Owner Trust	3,984.70	0.01
Lockheed Martin Corp	247,276.50	0.49
Los Angeles Unified School District/CA	143,672.40	0.29
Morgan Stanley	754,161.50	1.50
National Australia Bank Ltd	369,104.79	0.74
National Rural Utilities Cooperative Fi	371,376.34	0.74
NIKE Inc	115,686.12	0.23
PACCAR Inc	119,874.00	0.24
San Diego County Water Authority	256,905.22	0.51
San Juan Unified School District	132,185.79	0.26
State Board of Administration Finance C	398,244.60	0.79
State Street Corp	829,697.43	1.66
Toyota Motor Corp	458,189.85	0.91
Truist Financial Corp	118,418.30	0.24
United States Treasury	26,144,666.70	52.16
University of California Board of Regen	128,340.03	0.26
Wells Fargo & Co	475,626.37	0.95
Total	\$50,123,913.46	100.00%

Managed Account Detail of Securities Held

For the Month Ending **December 31, 2024**

CITY OF YORBA LINDA - 97480000

Security Type/Description			S&P	Moody's	Trade	Settle	Original	YTM	Accrued	Amortized	Market
Dated Date/Coupon/Maturity	CUSIP	Par	Rating	Rating	Date	Date	Cost	at Cost	Interest	Cost	Value
U.S. Treasury Bond / Note											
US TREASURY N/B DTD 12/31/2020 0.375% 12/31/2025	91282CBC4	245,000.00	AA+	Aaa	10/04/21	10/06/21	240,454.10	0.82	2.54	243,930.38	235,913.93
US TREASURY N/B DTD 12/31/2020 0.375% 12/31/2025	91282CBC4	650,000.00	AA+	Aaa	08/02/21	08/04/21	644,287.11	0.58	6.73	648,708.39	625,894.10
US TREASURY N/B DTD 02/01/2021 0.375% 01/31/2026	91282CBH3	650,000.00	AA+	Aaa	03/01/21	03/03/21	640,097.66	0.69	1,020.04	647,820.93	623,669.80
US TREASURY N/B DTD 02/16/2016 1.625% 02/15/2026	912828P46	650,000.00	AA+	Aaa	03/01/21	03/03/21	679,630.86	0.69	3,989.64	656,711.96	631,413.90
US TREASURY N/B DTD 03/31/2021 0.750% 03/31/2026	91282CBT7	375,000.00	AA+	Aaa	06/02/21	06/04/21	374,853.52	0.76	718.58	374,962.24	359,179.88
US TREASURY N/B DTD 04/30/2021 0.750% 04/30/2026	91282CBW0	370,000.00	AA+	Aaa	05/04/21	05/05/21	368,829.30	0.81	475.28	369,688.84	353,393.29
US TREASURY N/B DTD 05/16/2016 1.625% 05/15/2026	912828R36	500,000.00	AA+	Aaa	06/10/21	06/10/21	521,289.06	0.74	1,054.90	505,901.80	482,578.00
US TREASURY N/B DTD 06/01/2021 0.750% 05/31/2026	91282CCF6	500,000.00	AA+	Aaa	06/02/21	06/04/21	498,945.31	0.79	329.67	499,701.89	476,191.50
US TREASURY N/B DTD 06/30/2021 0.875% 06/30/2026	91282CCJ8	255,000.00	AA+	Aaa	09/03/21	09/08/21	256,324.81	0.76	6.16	255,411.17	242,618.47
US TREASURY N/B DTD 08/02/2021 0.625% 07/31/2026	91282CCP4	130,000.00	AA+	Aaa	11/03/21	11/04/21	126,948.05	1.14	340.01	128,983.86	122,850.00
US TREASURY N/B DTD 07/31/2024 4.375% 07/31/2026	91282CLB5	270,000.00	AA+	Aaa	10/09/24	10/10/24	271,539.84	4.04	4,943.27	271,354.13	270,432.54
US TREASURY N/B DTD 08/02/2021 0.625% 07/31/2026	91282CCP4	500,000.00	AA+	Aaa	01/04/22	01/05/22	484,121.09	1.34	1,307.74	494,516.64	472,500.00
US TREASURY N/B DTD 08/15/2016 1.500% 08/15/2026	9128282A7	260,000.00	AA+	Aaa	07/05/22	07/06/22	245,943.75	2.90	1,473.10	254,465.53	248,879.02
US TREASURY N/B DTD 08/31/2021 0.750% 08/31/2026	91282CCW9	500,000.00	AA+	Aaa	01/04/22	01/05/22	486,601.56	1.35	1,274.17	495,213.15	472,148.50

Managed Account Detail of Securities Held

For the Month Ending **December 31, 2024**

CITY OF YORBA LINDA - 97480000

Security Type/Description Dated Date/Coupon/Maturity	CUSIP	Par	S&P Rating	Moody's Rating	Trade Date	Settle Date	Original Cost	YTM at Cost	Accrued Interest	Amortized Cost	Market Value
U.S. Treasury Bond / Note											
US TREASURY N/B DTD 09/30/2024 3.500% 09/30/2026	91282CLP4	225,000.00	AA+	Aaa	12/13/24	12/16/24	222,152.34	4.24	2,012.02	222,220.04	222,152.40
US TREASURY N/B DTD 09/30/2021 0.875% 09/30/2026	91282CCZ2	1,000,000.00	AA+	Aaa	12/02/21	12/06/21	984,414.06	1.21	2,235.58	994,355.75	943,633.00
US TREASURY N/B DTD 11/30/2021 1.250% 11/30/2026	91282CDK4	125,000.00	AA+	Aaa	02/14/22	02/15/22	121,118.17	1.93	137.36	123,450.82	118,169.00
US TREASURY N/B DTD 01/31/2020 1.500% 01/31/2027	912828Z78	1,090,000.00	AA+	Aaa	12/01/23	12/05/23	999,095.70	4.36	6,842.12	1,030,080.43	1,030,731.25
US TREASURY N/B DTD 02/15/2017 2.250% 02/15/2027	912828V98	600,000.00	AA+	Aaa	07/05/22	07/06/22	584,296.88	2.86	5,099.18	592,777.50	575,742.00
US TREASURY N/B DTD 03/31/2022 2.500% 03/31/2027	91282CEF4	500,000.00	AA+	Aaa	03/01/24	03/05/24	473,046.88	4.40	3,193.68	480,308.11	481,406.50
US TREASURY N/B DTD 04/30/2020 0.500% 04/30/2027	912828ZN3	125,000.00	AA+	Aaa	05/05/22	05/11/22	110,996.09	2.94	107.04	118,449.41	114,648.50
US TREASURY N/B DTD 05/02/2022 2.750% 04/30/2027	91282CEN7	375,000.00	AA+	Aaa	05/03/22	05/04/22	371,367.19	2.96	1,766.23	373,307.21	362,505.00
US TREASURY N/B DTD 05/15/2017 2.375% 05/15/2027	912828X88	600,000.00	AA+	Aaa	07/05/22	07/06/22	585,539.06	2.91	1,850.14	592,957.02	574,546.80
US TREASURY N/B DTD 05/31/2022 2.625% 05/31/2027	91282CET4	390,000.00	AA+	Aaa	11/08/24	11/12/24	375,283.59	4.20	900.00	376,038.56	375,405.42
US TREASURY N/B DTD 06/01/2020 0.500% 05/31/2027	912828ZS2	1,200,000.00	AA+	Aaa	04/01/24	04/04/24	1,060,218.75	4.50	527.47	1,093,222.66	1,097,109.60
US TREASURY N/B DTD 06/30/2022 3.250% 06/30/2027	91282CEW7	350,000.00	AA+	Aaa	08/03/22	08/03/22	355,455.08	2.91	31.42	352,770.16	341,755.75
US TREASURY N/B DTD 08/01/2022 2.750% 07/31/2027	91282CFB2	500,000.00	AA+	Aaa	08/03/22	08/03/22	496,464.84	2.90	5,754.08	498,175.21	481,484.50
US TREASURY N/B DTD 08/31/2020 0.500% 08/31/2027	91282CAH4	480,000.00	AA+	Aaa	09/25/24	09/26/24	440,418.75	3.49	815.47	443,882.78	434,831.04

Managed Account Detail of Securities Held

For the Month Ending December 31, 2024

CITY OF YORBA LINDA - 97480000

Security Type/Description Dated Date/Coupon/Maturity	CUSIP	Par	S&P Rating	Moody's Rating	Trade Date	Settle Date	Original Cost	YTM at Cost	Accrued Interest	Amortized Cost	Market Value
U.S. Treasury Bond / Note											
US TREASURY N/B DTD 08/31/2020 0.500% 08/31/2027	91282CAH4	520,000.00	AA+	Aaa	07/01/24	07/02/24	458,229.69	4.58	883.43	467,471.99	471,066.96
US TREASURY N/B DTD 08/31/2020 0.500% 08/31/2027	91282CAH4	1,200,000.00	AA+	Aaa	08/01/24	08/02/24	1,078,078.13	4.04	2,038.67	1,093,805.59	1,087,077.60
US TREASURY N/B DTD 09/30/2020 0.375% 09/30/2027	91282CAL5	600,000.00	AA+	Aaa	10/28/24	10/29/24	539,507.81	4.07	574.86	542,964.50	539,859.60
US TREASURY N/B DTD 10/31/2022 4.125% 10/31/2027	91282CFU0	100,000.00	AA+	Aaa	12/05/22	12/07/22	101,308.59	3.83	706.49	100,755.61	99,593.80
US TREASURY N/B DTD 10/31/2022 4.125% 10/31/2027	91282CFU0	500,000.00	AA+	Aaa	01/03/23	01/06/23	503,222.66	3.98	3,532.46	501,892.56	497,969.00
US TREASURY N/B DTD 11/15/2017 2.250% 11/15/2027	9128283F5	410,000.00	AA+	Aaa	12/03/24	12/05/24	388,843.36	4.13	1,197.72	389,352.07	387,594.32
US TREASURY N/B DTD 11/30/2022 3.875% 11/30/2027	91282CFZ9	420,000.00	AA+	Aaa	12/05/22	12/07/22	421,525.78	3.79	1,430.77	420,891.65	415,209.48
US TREASURY N/B DTD 02/01/2021 0.750% 01/31/2028	91282CBJ9	270,000.00	AA+	Aaa	11/27/24	11/29/24	242,694.14	4.19	847.42	243,414.54	242,567.46
US TREASURY N/B DTD 01/31/2023 3.500% 01/31/2028	91282CGH8	450,000.00	AA+	Aaa	01/31/23	02/02/23	447,169.92	3.64	6,591.03	448,254.47	439,628.85
US TREASURY N/B DTD 02/15/2018 2.750% 02/15/2028	9128283W8	1,800,000.00	AA+	Aaa	08/29/24	09/03/24	1,742,203.13	3.75	18,697.01	1,747,368.78	1,718,508.60
US TREASURY N/B DTD 03/31/2023 3.625% 03/31/2028	91282CGT2	750,000.00	AA+	Aaa	05/02/23	05/03/23	754,335.94	3.50	6,946.26	752,864.04	734,472.75
US TREASURY N/B DTD 05/01/2023 3.500% 04/30/2028	91282CHA2	670,000.00	AA+	Aaa	05/01/23	05/03/23	666,702.35	3.61	4,016.30	667,803.37	653,014.16
US TREASURY N/B DTD 05/15/2018 2.875% 05/15/2028	9128284N7	725,000.00	AA+	Aaa	05/18/23	05/24/23	698,548.83	3.68	2,706.23	707,103.99	692,431.55
US TREASURY N/B DTD 05/31/2023 3.625% 05/31/2028	91282CHE4	750,000.00	AA+	Aaa	06/01/23	06/02/23	747,480.47	3.70	2,390.11	748,279.82	733,476.75

Managed Account Detail of Securities Held

For the Month Ending **December 31, 2024**

CITY OF YORBA LINDA - 97480000

Security Type/Description Dated Date/Coupon/Maturity	CUSIP	Par	S&P Rating	Moody's Rating	Trade Date	Settle Date	Original Cost	YTM at Cost	Accrued Interest	Amortized Cost	Market Value
U.S. Treasury Bond / Note											
US TREASURY N/B DTD 08/02/2021 1.000% 07/31/2028	91282CCR0	95,000.00	AA+	Aaa	10/08/24	10/10/24	85,403.52	3.88	397.55	85,932.82	84,561.12
US TREASURY N/B DTD 08/31/2023 4.375% 08/31/2028	91282CHX2	250,000.00	AA+	Aaa	09/12/23	09/14/23	249,433.59	4.43	3,716.33	249,581.99	250,166.00
US TREASURY N/B DTD 08/31/2023 4.375% 08/31/2028	91282CHX2	1,300,000.00	AA+	Aaa	11/01/24	11/05/24	1,308,277.34	4.19	19,324.93	1,307,962.30	1,300,863.20
US TREASURY N/B DTD 09/30/2021 1.250% 09/30/2028	91282CCY5	1,450,000.00	AA+	Aaa	12/02/24	12/05/24	1,301,658.20	4.18	4,630.84	1,304,329.92	1,295,711.30
US TREASURY N/B DTD 11/30/2021 1.500% 11/30/2028	91282CDL2	765,000.00	AA+	Aaa	01/02/24	01/04/24	681,417.78	3.97	1,008.79	698,348.78	686,976.12
US TREASURY N/B DTD 02/29/2024 4.250% 02/28/2029	91282CKD2	240,000.00	AA+	Aaa	11/08/24	11/12/24	240,834.38	4.16	3,465.75	240,809.91	238,846.80
US TREASURY N/B DTD 05/02/2022 2.875% 04/30/2029	91282CEM9	225,000.00	AA+	Aaa	10/09/24	10/10/24	215,340.82	3.91	1,107.91	215,787.32	211,754.93
US TREASURY N/B DTD 05/31/2024 4.500% 05/31/2029	91282CKT7	360,000.00	AA+	Aaa	12/11/24	12/12/24	365,793.75	4.10	1,424.18	365,728.29	361,673.28
US TREASURY N/B DTD 09/30/2022 3.875% 09/30/2029	91282CFL0	235,000.00	AA+	Aaa	10/01/24	10/03/24	238,488.28	3.55	2,326.60	238,329.88	229,859.38
Security Type Sub-Total		27,500,000.00					26,496,231.86	3.17	138,175.26	26,678,400.76	26,144,666.70
Supra-National Agency Bond / Note											
INTL FINANCE CORP DTD 12/06/2023 4.375% 01/15/2027	45950KDF4	235,000.00	AAA	Aaa	11/29/23	12/06/23	234,233.90	4.49	4,740.80	234,485.90	234,810.83
Security Type Sub-Total		235,000.00					234,233.90	4.49	4,740.80	234,485.90	234,810.83
Municipal Bond / Note											
SAN DIEGO WTR AUTH-A DTD 07/22/2020 0.743% 05/01/2025	797412DM2	260,000.00	AAA	Aa2	07/09/20	07/22/20	260,000.00	0.74	321.97	260,000.00	256,905.22

Managed Account Detail of Securities Held

For the Month Ending **December 31, 2024**

CITY OF YORBA LINDA - 97480000

Security Type/Description			S&P	Moody's	Trade	Settle	Original	YTM	Accrued	Amortized	Market
Dated Date/Coupon/Maturity	CUSIP	Par	Rating	Rating	Date	Date	Cost	at Cost	Interest	Cost	Value
Municipal Bond / Note											
UNIV OF CALIFORNIA-BF DTD 07/16/2020 0.933% 05/15/2025	91412HFM0	130,000.00	AA	Aa2	07/10/20	07/16/20	130,000.00	0.93	154.98	130,000.00	128,340.03
FLORIDA ST BRD OF ADM DTD 09/16/2020 1.258% 07/01/2025	341271AD6	130,000.00	AA	Aa2	09/03/20	09/16/20	130,919.10	1.11	817.70	130,095.91	127,831.60
FLORIDA ST BRD OF ADM DTD 09/16/2020 1.258% 07/01/2025	341271AD6	275,000.00	AA	Aa2	09/03/20	09/16/20	275,000.00	1.26	1,729.75	275,000.00	270,413.00
SAN JUAN CA UNIF SCH DTD 10/29/2020 0.852% 08/01/2025	798306WP7	135,000.00	NR	Aa2	10/16/20	10/29/20	135,000.00	0.85	479.25	135,000.00	132,185.79
LOS ANGELES UN SD-B DTD 11/10/2021 1.455% 07/01/2026	544647FC9	150,000.00	NR	Aa2	10/28/21	11/10/21	150,000.00	1.46	1,091.25	150,000.00	143,672.40
CA ST UNIV TRUSTEES - DTD 08/09/2023 4.755% 11/01/2026	13077DTC6	110,000.00	AA-	Aa2	07/20/23	08/09/23	110,000.00	4.75	871.75	110,000.00	110,606.98
Security Type Sub-Total		1,190,000.00					1,190,919.10	1.40	5,466.65	1,190,095.91	1,169,955.02

Federal Agency Commercial Mortgage-Backed Security											
FHMS K058 A2 DTD 11/01/2016 2.653% 08/01/2026	3137BSP72	485,000.00	AA+	Aaa	04/06/23	04/12/23	464,576.95	3.98	1,072.25	474,998.93	470,719.66
FHMS K059 A2 DTD 11/01/2016 3.120% 09/01/2026	3137BSRE5	475,000.00	AA+	Aaa	11/15/23	11/20/23	449,895.51	5.11	1,235.00	459,227.01	463,963.85
FHMS K061 A2 DTD 01/01/2017 3.347% 11/01/2026	3137BTUM1	341,259.97	AA+	Aaa	05/19/23	05/24/23	330,755.55	4.29	951.83	335,562.09	333,074.51
FHMS K063 A2 DTD 03/01/2017 3.430% 01/01/2027	3137BVZ82	505,000.00	AA+	Aaa	05/18/23	05/23/23	490,402.34	4.28	1,443.46	496,784.68	494,028.37
FHMS K064 A2 DTD 05/01/2017 3.224% 03/01/2027	3137BXOY1	495,000.00	AA+	Aaa	08/16/23	08/18/23	466,924.22	4.94	1,329.90	477,596.05	481,433.54
FHMS K065 A2 DTD 07/01/2017 3.243% 04/01/2027	3137F1G44	500,000.00	AA+	Aaa	06/08/23	06/13/23	479,121.09	4.42	1,351.25	487,490.65	485,400.00
FHMS K070 A2 DTD 12/01/2017 3.303% 11/01/2027	3137FCJK1	255,000.00	AA+	Aaa	07/01/24	07/05/24	242,279.88	4.90	701.89	243,978.68	246,164.25

Managed Account Detail of Securities Held

For the Month Ending **December 31, 2024**

CITY OF YORBA LINDA - 97480000

Security Type/Description Dated Date/Coupon/Maturity	CUSIP	Par	S&P Rating	Moody's Rating	Trade Date	Settle Date	Original Cost	YTM at Cost	Accrued Interest	Amortized Cost	Market Value
Federal Agency Commercial Mortgage-Backed Security											
FHMS K074 A2 DTD 03/01/2018 3.600% 01/01/2028	3137F4D41	500,000.00	AA+	Aaa	07/19/24	07/24/24	483,105.47	4.64	1,500.00	485,053.73	485,348.00
FHMS KJ48 A1 DTD 12/01/2023 4.858% 05/01/2028	3137HBC69	372,040.43	AA+	Aaa	12/06/23	12/14/23	372,037.45	4.86	1,506.14	372,039.26	373,571.75
FHMS KJ46 A1 DTD 07/01/2023 4.777% 06/01/2028	3137HAD45	376,082.47	AA+	Aaa	07/19/23	07/27/23	376,073.06	4.78	1,497.12	376,075.79	374,996.34
FHMS K505 A2 DTD 07/01/2023 4.819% 06/01/2028	3137HACX2	465,000.00	AA+	Aaa	07/13/23	07/20/23	469,644.42	4.59	1,867.36	468,281.18	466,058.81
FNA 2023-M6 A2 DTD 07/01/2023 4.181% 07/01/2028	3136BODE6	449,103.76	AA+	Aaa	07/18/23	07/31/23	441,490.04	4.58	1,564.82	443,654.48	440,217.34
FHMS K508 A2 DTD 10/01/2023 4.740% 08/01/2028	3137HAQ74	455,000.00	AA+	Aaa	10/11/23	10/19/23	445,019.12	5.25	1,797.25	447,250.13	454,867.60
FHMS K506 A2 DTD 09/01/2023 4.650% 08/01/2028	3137HAMH6	470,000.00	AA+	Aaa	09/07/23	09/14/23	463,047.29	4.99	1,821.25	464,702.44	468,981.04
FHMS K509 A2 DTD 10/01/2023 4.850% 09/01/2028	3137HAST4	340,000.00	AA+	Aaa	10/25/23	10/31/23	329,159.78	5.60	1,374.17	331,341.93	341,326.00
FHMS K507 A2 DTD 09/01/2023 4.800% 09/01/2028	3137HAMS2	455,000.00	AA+	Aaa	09/20/23	09/28/23	449,561.39	5.07	1,820.00	450,738.54	455,884.52
FHMS K510 A2 DTD 11/01/2023 5.069% 10/01/2028	3137HB3D4	175,000.00	AA+	Aaa	11/14/23	11/21/23	174,494.08	5.14	739.23	174,597.06	176,899.10
FHMS K511 A2 DTD 12/01/2023 4.860% 10/01/2028	3137HB3G7	265,000.00	AA+	Aaa	11/28/23	12/07/23	264,238.66	4.93	1,073.25	264,389.26	265,855.16
FHMS K514 A2 DTD 02/01/2024 4.572% 12/01/2028	3137HBLV4	500,000.00	AA+	Aaa	06/03/24	06/06/24	492,187.50	4.95	1,905.00	493,067.88	496,491.50
FHMS K524 A2 DTD 07/01/2024 4.720% 05/01/2029	3137HDV56	395,000.00	AA+	Aaa	07/16/24	07/25/24	397,425.69	4.58	1,553.67	397,265.96	394,189.86
FHMS K522 A2 DTD 06/01/2024 4.803% 05/01/2029	3137HDJJ0	485,000.00	AA+	Aaa	06/05/24	06/13/24	484,998.55	4.80	1,941.21	485,000.00	485,253.66

Managed Account Detail of Securities Held

For the Month Ending **December 31, 2024**

CITY OF YORBA LINDA - 97480000

Security Type/Description Dated Date/Coupon/Maturity	CUSIP	Par	S&P Rating	Moody's Rating	Trade Date	Settle Date	Original Cost	YTM at Cost	Accrued Interest	Amortized Cost	Market Value
Federal Agency Commercial Mortgage-Backed Security											
FHMS K526 A2 DTD 08/01/2024 4.543% 07/01/2029	3137HDXL9	440,000.00	AA+	Aaa	08/07/24	08/15/24	444,115.76	4.33	1,665.77	443,832.89	435,673.04
FHMS K528 A2 DTD 09/01/2024 4.508% 07/01/2029	3137HFNZ4	500,000.00	AA+	Aaa	10/22/24	10/25/24	500,742.19	4.47	1,878.33	500,728.13	494,560.50
FHMS K529 A2 DTD 10/01/2024 4.791% 09/01/2029	3137HH6C0	295,000.00	AA+	Aaa	10/08/24	10/16/24	300,896.17	4.34	1,177.79	300,673.41	294,956.93
Security Type Sub-Total		9,993,486.63					9,812,192.16	4.72	34,767.94	9,874,330.16	9,879,915.33
Federal Agency Bond / Note											
FEDERAL HOME LOAN BANK (CALLABLE) DTD 02/10/2021 0.830% 02/10/2027	3130AKYH3	390,000.00	AA+	Aaa	08/18/22	08/19/22	349,287.90	3.36	1,267.83	370,819.07	362,668.02
Security Type Sub-Total		390,000.00					349,287.90	3.36	1,267.83	370,819.07	362,668.02
Corporate Note											
STATE STREET CORP (CALLABLE) DTD 10/29/2020 2.901% 03/30/2026	857477BM4	230,000.00	A	Aa3	03/10/22	03/14/22	231,386.90	2.74	1,686.61	230,112.62	228,850.00
BANK OF AMERICA CORP (CALLABLE) DTD 03/22/2022 3.384% 04/02/2026	06051GKM0	250,000.00	A-	A1	03/17/22	03/22/22	250,000.00	3.38	2,091.50	250,000.00	249,063.75
NATIONAL RURAL UTIL COOP (CALLABLE) DTD 02/24/2021 1.000% 06/15/2026	63743HEW8	210,000.00	A-	A2	03/27/24	04/01/24	192,777.90	4.97	93.33	198,634.28	199,356.57
BANK OF NY MELLON CORP (CALLABLE) DTD 07/26/2022 4.414% 07/24/2026	06406RBJ5	75,000.00	A	Aa3	07/19/22	07/26/22	75,000.00	4.41	1,443.75	75,000.00	74,798.03
BANK OF NY MELLON CORP (CALLABLE) DTD 07/27/2021 1.050% 10/15/2026	06406RAV9	240,000.00	A	Aa3	12/15/23	12/19/23	216,357.60	4.82	532.00	225,014.07	225,733.92
AMERICAN EXPRESS CO (CALLABLE) DTD 11/04/2021 1.650% 11/04/2026	025816CM9	245,000.00	A-	A2	11/19/21	11/23/21	244,593.30	1.69	640.06	244,848.60	232,175.23
ADOBE INC (CALLABLE) DTD 02/03/2020 2.150% 02/01/2027	00724PAC3	120,000.00	A+	A1	07/01/22	07/06/22	113,362.80	3.47	1,075.00	116,973.92	114,524.28

Managed Account Detail of Securities Held

For the Month Ending **December 31, 2024**

CITY OF YORBA LINDA - 97480000

Security Type/Description Dated Date/Coupon/Maturity	CUSIP	Par	S&P Rating	Moody's Rating	Trade Date	Settle Date	Original Cost	YTM at Cost	Accrued Interest	Amortized Cost	Market Value
Corporate Note											
CISCO SYSTEMS INC (CALLABLE) DTD 02/26/2024 4.800% 02/26/2027	17275RBO4	240,000.00	AA-	A1	08/05/24	08/06/24	242,928.00	4.29	4,000.00	242,471.30	241,737.12
CHARLES SCHWAB CORP (CALLABLE) DTD 03/03/2022 2.450% 03/03/2027	808513BY0	250,000.00	A-	A2	11/01/22	11/03/22	223,595.00	5.20	2,007.64	236,763.65	238,723.00
STATE STREET CORP (CALLABLE) DTD 03/18/2024 4.993% 03/18/2027	857477CL5	80,000.00	A	Aa3	03/15/24	03/19/24	79,844.00	5.06	1,142.84	79,882.69	80,658.64
STATE STREET CORP (CALLABLE) DTD 03/18/2024 4.993% 03/18/2027	857477CL5	145,000.00	A	Aa3	03/13/24	03/18/24	145,000.00	4.99	2,071.40	145,000.00	146,193.79
NIKE INC (CALLABLE) DTD 03/27/2020 2.750% 03/27/2027	654106AJ2	120,000.00	AA-	A1	06/24/22	06/28/22	115,272.00	3.66	861.67	117,770.18	115,686.12
GOLDMAN SACHS BANK USA (CALLABLE) DTD 05/21/2024 5.414% 05/21/2027	38151LAG5	190,000.00	A+	A1	05/15/24	05/21/24	190,000.00	5.41	1,142.96	190,000.00	191,483.33
NATIONAL AUSTRALIA BK/NY DTD 06/11/2024 5.087% 06/11/2027	63253OAJ3	365,000.00	AA-	Aa2	06/04/24	06/11/24	365,573.05	5.03	1,031.53	365,473.70	369,104.79
ANALOG DEVICES INC (CALLABLE) DTD 09/18/2023 3.450% 06/15/2027	032654BA2	255,000.00	A-	NR	09/26/24	09/27/24	251,651.85	3.96	391.00	251,958.12	248,491.89
AMERICAN HONDA FINANCE DTD 07/10/2024 4.900% 07/09/2027	02665WFK2	110,000.00	A-	A3	07/08/24	07/10/24	109,858.10	4.95	2,560.25	109,879.34	110,379.50
AMERICAN HONDA FINANCE DTD 07/10/2024 4.900% 07/09/2027	02665WFK2	240,000.00	A-	A3	08/22/24	08/23/24	243,309.60	4.38	5,586.00	242,923.69	240,828.00
AUST & NZ BANKING GRP NY DTD 07/16/2024 4.900% 07/16/2027	05253JB34	290,000.00	AA-	Aa2	07/08/24	07/16/24	290,000.00	4.90	6,512.92	290,000.00	292,235.90
BLACKROCK FUNDING INC (CALLABLE) DTD 07/26/2024 4.600% 07/26/2027	09290DAH4	245,000.00	AA-	Aa3	07/17/24	07/26/24	244,992.65	4.60	4,852.36	244,994.13	245,597.31
HONEYWELL INTERNATIONAL (CALLABLE) DTD 08/01/2024 4.650% 07/30/2027	438516CX2	145,000.00	A	A2	08/05/24	08/06/24	146,684.90	4.23	2,809.38	146,462.87	145,517.22
HONEYWELL INTERNATIONAL (CALLABLE) DTD 08/01/2024 4.650% 07/30/2027	438516CX2	230,000.00	A	A2	07/29/24	08/01/24	229,993.10	4.65	4,456.25	229,994.47	230,820.41

Managed Account Detail of Securities Held

For the Month Ending **December 31, 2024**

CITY OF YORBA LINDA - 97480000

Security Type/Description			S&P	Moody's	Trade	Settle	Original	YTM	Accrued	Amortized	Market
Dated Date/Coupon/Maturity	CUSIP	Par	Rating	Rating	Date	Date	Cost	at Cost	Interest	Cost	Value
Corporate Note											
TRUIST FINANCIAL CORP (CALLABLE) DTD 08/03/2020 1.125% 08/03/2027	89788MAC6	130,000.00	A-	Baa1	08/03/22	08/05/22	113,787.70	3.90	601.25	121,596.29	118,418.30
PACCAR FINANCIAL CORP DTD 08/06/2024 4.450% 08/06/2027	69371RT30	120,000.00	A+	A1	08/01/24	08/06/24	119,840.40	4.50	2,150.83	119,860.91	119,874.00
TOYOTA MOTOR CREDIT CORP DTD 10/10/2024 4.350% 10/08/2027	89236TMS1	130,000.00	A+	A1	10/07/24	10/10/24	129,949.30	4.36	1,272.38	129,953.02	129,075.31
TOYOTA MOTOR CREDIT CORP DTD 10/10/2024 4.350% 10/08/2027	89236TMS1	140,000.00	A+	A1	10/08/24	10/10/24	140,054.60	4.34	1,370.25	140,050.97	139,004.18
CATERPILLAR FINL SERVICE DTD 08/16/2024 4.400% 10/15/2027	14913UAR1	285,000.00	A	A2	08/13/24	08/16/24	285,723.90	4.32	2,647.33	285,643.25	283,873.39
BP CAP MARKETS AMERICA (CALLABLE) DTD 05/17/2024 5.017% 11/17/2027	10373OBY5	250,000.00	A-	A1	05/16/24	05/20/24	250,007.50	5.02	1,532.97	250,006.44	252,712.50
JPMORGAN CHASE & CO (CALLABLE) DTD 01/23/2024 5.040% 01/23/2028	46647PEAO	200,000.00	A	A1	01/16/24	01/23/24	200,000.00	5.04	4,424.00	200,000.00	200,727.00
JPMORGAN CHASE & CO (CALLABLE) DTD 04/22/2024 5.571% 04/22/2028	46647PEE2	215,000.00	A	A1	04/15/24	04/22/24	215,000.00	5.57	2,295.72	215,000.00	218,671.13
CITIBANK NA (CALLABLE) DTD 09/29/2023 5.803% 09/29/2028	17325FBB3	445,000.00	A+	Aa3	09/26/23	09/29/23	445,000.00	5.80	6,599.30	445,000.00	458,850.63
LOCKHEED MARTIN CORP (CALLABLE) DTD 01/29/2024 4.500% 02/15/2029	539830CC1	250,000.00	A-	A2	03/05/24	03/07/24	246,890.00	4.78	4,250.00	247,356.14	247,276.50
BRISTOL-MYERS SQUIBB CO (CALLABLE) DTD 02/22/2024 4.900% 02/22/2029	110122EF1	105,000.00	A	A2	02/14/24	02/22/24	104,779.50	4.95	1,843.63	104,813.77	105,463.37
BRISTOL-MYERS SQUIBB CO (CALLABLE) DTD 02/22/2024 4.900% 02/22/2029	110122EF1	120,000.00	A	A2	02/15/24	02/22/24	120,289.20	4.85	2,107.00	120,243.58	120,529.56
ASTRAZENECA FINANCE LLC (CALLABLE) DTD 02/26/2024 4.850% 02/26/2029	04636NAL7	145,000.00	A+	A2	02/21/24	02/26/24	144,847.75	4.87	2,441.84	144,871.16	145,300.44
CISCO SYSTEMS INC (CALLABLE) DTD 02/26/2024 4.850% 02/26/2029	17275RBR2	255,000.00	AA-	A1	02/21/24	02/26/24	254,910.75	4.86	4,294.27	254,925.08	256,605.22

Managed Account Detail of Securities Held

For the Month Ending **December 31, 2024**

CITY OF YORBA LINDA - 97480000

Security Type/Description Dated Date/Coupon/Maturity	CUSIP	Par	S&P Rating	Moody's Rating	Trade Date	Settle Date	Original Cost	YTM at Cost	Accrued Interest	Amortized Cost	Market Value
Corporate Note											
BLACKROCK FUNDING INC (CALLABLE) DTD 03/14/2024 4.700% 03/14/2029	09290DAA9	45,000.00	AA-	Aa3	03/05/24	03/14/24	44,918.55	4.74	628.63	44,930.46	45,039.92
TOYOTA MOTOR CREDIT CORP DTD 05/16/2024 5.050% 05/16/2029	89236TMF9	125,000.00	A+	A1	05/13/24	05/16/24	124,732.50	5.10	789.06	124,762.57	125,879.63
NATIONAL RURAL UTIL COOP (CALLABLE) DTD 05/10/2024 5.150% 06/15/2029	63743HFS6	170,000.00	A-	A2	07/09/24	07/10/24	171,518.10	4.94	389.11	171,385.30	172,019.77
HOME DEPOT INC (CALLABLE) DTD 06/25/2024 4.750% 06/25/2029	437076DC3	120,000.00	A	A2	06/17/24	06/25/24	119,226.00	4.90	95.00	119,297.62	120,253.92
HOME DEPOT INC (CALLABLE) DTD 06/25/2024 4.750% 06/25/2029	437076DC3	125,000.00	A	A2	06/18/24	06/25/24	124,601.25	4.82	98.96	124,638.52	125,264.50
HOME DEPOT INC (CALLABLE) DTD 06/25/2024 4.750% 06/25/2029	437076DC3	125,000.00	A	A2	06/18/24	06/25/24	124,631.25	4.82	98.96	124,665.90	125,264.50
TOYOTA MOTOR CREDIT CORP DTD 08/09/2024 4.550% 08/09/2029	89236TMK8	65,000.00	A+	A1	08/06/24	08/09/24	64,868.05	4.60	1,166.57	64,877.44	64,230.73
ELI LILLY & CO (CALLABLE) DTD 08/14/2024 4.200% 08/14/2029	532457CO9	80,000.00	A+	A1	08/12/24	08/14/24	79,824.80	4.25	1,278.67	79,837.17	78,440.88
ACCENTURE CAPITAL INC (CALLABLE) DTD 10/04/2024 4.050% 10/04/2029	00440KAB9	170,000.00	AA-	Aa3	10/01/24	10/04/24	169,702.50	4.09	1,663.88	169,716.01	164,925.50
COOPERAT RABOBANK UA/NY DTD 10/17/2024 4.494% 10/17/2029	21688ABH4	500,000.00	A+	Aa2	10/22/24	10/23/24	497,220.00	4.62	4,618.83	497,316.77	490,158.00
STATE STREET BANK & TR DTD 11/25/2024 4.782% 11/23/2029	857449AE2	375,000.00	AA-	Aa2	11/20/24	11/25/24	375,000.00	4.78	1,793.25	375,000.00	373,995.00
BP CAP MARKETS AMERICA (CALLABLE) DTD 11/25/2024 4.868% 11/25/2029	10373QCB4	125,000.00	A-	A1	11/20/24	11/25/24	125,000.00	4.87	608.50	125,000.00	125,050.13
Security Type Sub-Total		9,090,000.00					8,994,504.35	4.60	98,048.64	9,034,906.00	9,028,862.81
Certificate of Deposit											
COOPERAT RABOBANK UA/NY DTD 07/20/2023 5.080% 07/17/2026	21684LGS5	705,000.00	A+	Aa2	07/17/23	07/20/23	705,000.00	5.08	16,315.27	705,000.00	718,691.10

Managed Account Detail of Securities Held

For the Month Ending **December 31, 2024**

CITY OF YORBA LINDA - 97480000

Security Type/Description Dated Date/Coupon/Maturity	CUSIP	Par	S&P Rating	Moody's Rating	Trade Date	Settle Date	Original Cost	YTM at Cost	Accrued Interest	Amortized Cost	Market Value
Certificate of Deposit											
NATIXIS NY BRANCH DTD 09/20/2023 5.610% 09/18/2026	63873OP65	340,000.00	A+	A1	09/18/23	09/20/23	340,000.00	5.61	5,563.25	340,000.00	348,368.76
CREDIT AGRICOLE CIB NY DTD 02/05/2024 4.760% 02/01/2027	22536DWD6	365,000.00	A+	A1	02/01/24	02/05/24	365,000.00	4.76	15,974.43	365,000.00	363,199.09
Security Type Sub-Total		1,410,000.00					1,410,000.00	5.13	37,852.95	1,410,000.00	1,430,258.95
Bank Note											
WELLS FARGO BANK NA (CALLABLE) DTD 08/09/2023 5.450% 08/07/2026	94988J6D4	470,000.00	A+	Aa2	08/02/23	08/09/23	469,962.40	5.45	10,246.00	469,979.91	475,626.37
CITIBANK NA (CALLABLE) DTD 12/04/2023 5.488% 12/04/2026	17325FBC1	250,000.00	A+	Aa3	11/27/23	12/04/23	250,000.00	5.49	1,029.00	250,000.00	253,690.50
MORGAN STANLEY BANK NA (CALLABLE) DTD 01/18/2024 4.952% 01/14/2028	61690U8A1	500,000.00	A+	Aa3	04/30/24	05/03/24	492,900.00	5.38	11,485.89	494,068.41	500,676.00
MORGAN STANLEY BANK NA (CALLABLE) DTD 05/30/2024 5.504% 05/26/2028	61690U8B9	250,000.00	A+	Aa3	05/29/24	05/30/24	250,302.50	5.47	1,337.78	250,247.27	253,485.50
Security Type Sub-Total		1,470,000.00					1,463,164.90	5.44	24,098.67	1,464,295.59	1,483,478.37
Asset-Backed Security											
KCOT 2021-2A A3 DTD 07/28/2021 0.560% 11/17/2025	50117XAE2	3,990.93	NR	Aaa	07/20/21	07/28/21	3,990.77	0.56	0.99	3,990.89	3,984.70
CARMX 2021-3 A3 DTD 07/28/2021 0.550% 06/15/2026	14317DAC4	44,078.95	AAA	Aaa	07/21/21	07/28/21	44,071.71	0.56	10.77	44,076.79	43,745.89
HAROT 2022-2 A3 DTD 08/24/2022 3.730% 07/20/2026	43815PAC3	38,933.94	AAA	NR	08/15/22	08/24/22	38,931.62	3.73	52.44	38,933.01	38,802.11
CARMX 2022-3 A3 DTD 07/20/2022 3.970% 04/15/2027	14318MAD1	201,103.73	AAA	NR	07/12/22	07/20/22	201,098.98	3.97	354.84	201,101.43	200,493.38
COPAR 2022-2 A3 DTD 08/10/2022 3.660% 05/17/2027	14043GAD6	102,823.93	AAA	Aaa	08/02/22	08/10/22	102,816.57	3.66	167.26	102,820.26	102,271.35

Managed Account Detail of Securities Held

For the Month Ending **December 31, 2024**

CITY OF YORBA LINDA - 97480000

Security Type/Description	S&P	Moody's	Trade	Settle	Original	YTM	Accrued	Amortized	Market
Dated Date/Coupon/Maturity	Rating	Rating	Date	Date	Cost	at Cost	Interest	Cost	Value
CUSIP	Par								
Security Type Sub-Total					390,909.65	3.45	586.30	390,922.38	389,297.43
Managed Account Sub-Total					50,341,443.82	3.82	345,005.04	50,648,255.77	50,123,913.46
Securities Sub-Total					\$50,341,443.82	3.82%	\$345,005.04	\$50,648,255.77	\$50,123,913.46
Accrued Interest									\$345,005.04
Total Investments									\$50,468,918.50

Managed Account Fair Market Value & Analytics

For the Month Ending **December 31, 2024**

CITY OF YORBA LINDA - 97480000

Security Type/Description Dated Date/Coupon/Maturity	CUSIP	Par	Broker	Next Call Date	Market Price	Market Value	Unreal G/L On Cost	Unreal G/L Amort Cost	Effective Duration	YTM at Mkt
U.S. Treasury Bond / Note										
US TREASURY N/B DTD 12/31/2020 0.375% 12/31/2025	91282CBC4	245,000.00	JPMorgan		96.29	235,913.93	(4,540.17)	(8,016.45)	0.98	4.22
US TREASURY N/B DTD 12/31/2020 0.375% 12/31/2025	91282CBC4	650,000.00	JPMorgan		96.29	625,894.10	(18,393.01)	(22,814.29)	0.98	4.22
US TREASURY N/B DTD 02/01/2021 0.375% 01/31/2026	91282CBH3	650,000.00	BOFAML		95.95	623,669.80	(16,427.86)	(24,151.13)	1.06	4.28
US TREASURY N/B DTD 02/16/2016 1.625% 02/15/2026	912828P46	650,000.00	Barclays		97.14	631,413.90	(48,216.96)	(25,298.06)	1.09	4.30
US TREASURY N/B DTD 03/31/2021 0.750% 03/31/2026	91282CBT7	375,000.00	JPMorgan		95.78	359,179.88	(15,673.64)	(15,782.36)	1.21	4.27
US TREASURY N/B DTD 04/30/2021 0.750% 04/30/2026	91282CBW0	370,000.00	CABRERA		95.51	353,393.29	(15,436.01)	(16,295.55)	1.29	4.27
US TREASURY N/B DTD 05/16/2016 1.625% 05/15/2026	912828R36	500,000.00	JPMorgan		96.52	482,578.00	(38,711.06)	(23,323.80)	1.33	4.26
US TREASURY N/B DTD 06/01/2021 0.750% 05/31/2026	91282CCF6	500,000.00	SBSC		95.24	476,191.50	(22,753.81)	(23,510.39)	1.38	4.26
US TREASURY N/B DTD 06/30/2021 0.875% 06/30/2026	91282CCJ8	255,000.00	MorganSt		95.14	242,618.47	(13,706.34)	(12,792.70)	1.46	4.26
US TREASURY N/B DTD 08/02/2021 0.625% 07/31/2026	91282CCP4	130,000.00	HSBC		94.50	122,850.00	(4,098.05)	(6,133.86)	1.54	4.26
US TREASURY N/B DTD 07/31/2024 4.375% 07/31/2026	91282CLB5	270,000.00	HSBC		100.16	270,432.54	(1,107.30)	(921.59)	1.49	4.27
US TREASURY N/B DTD 08/02/2021 0.625% 07/31/2026	91282CCP4	500,000.00	GoldmanS		94.50	472,500.00	(11,621.09)	(22,016.64)	1.54	4.26
US TREASURY N/B DTD 08/15/2016 1.500% 08/15/2026	9128282A7	260,000.00	Barclays		95.72	248,879.02	2,935.27	(5,586.51)	1.57	4.26
US TREASURY N/B DTD 08/31/2021 0.750% 08/31/2026	91282CCW9	500,000.00	CSFirstB		94.43	472,148.50	(14,453.06)	(23,064.65)	1.62	4.27
US TREASURY N/B DTD 09/30/2024 3.500% 09/30/2026	91282CLP4	225,000.00	BNP Sec		98.73	222,152.40	0.06	(67.64)	1.66	4.26
US TREASURY N/B DTD 09/30/2021 0.875% 09/30/2026	91282CCZ2	1,000,000.00	MorganSt		94.36	943,633.00	(40,781.06)	(50,722.75)	1.70	4.27
US TREASURY N/B DTD 11/30/2021 1.250% 11/30/2026	91282CDK4	125,000.00	BOFAML		94.54	118,169.00	(2,949.17)	(5,281.82)	1.86	4.27

Managed Account Fair Market Value & Analytics

For the Month Ending **December 31, 2024**

CITY OF YORBA LINDA - 97480000

Security Type/Description Dated Date/Coupon/Maturity	CUSIP	Par	Broker	Next Call Date	Market Price	Market Value	Unreal G/L On Cost	Unreal G/L Amort Cost	Effective Duration	YTM at Mkt
U.S. Treasury Bond / Note										
US TREASURY N/B	912828Z78	1,090,000.00	Nomura		94.56	1,030,731.25	31,635.55	650.82	2.00	4.27
DTD 01/31/2020 1.500% 01/31/2027										
US TREASURY N/B	912828V98	600,000.00	Barclays		95.96	575,742.00	(8,554.88)	(17,035.50)	2.03	4.27
DTD 02/15/2017 2.250% 02/15/2027										
US TREASURY N/B	91282CEF4	500,000.00	MorganSt		96.28	481,406.50	8,359.62	1,098.39	2.14	4.25
DTD 03/31/2022 2.500% 03/31/2027										
US TREASURY N/B	912828ZN3	125,000.00	Barclays		91.72	114,648.50	3,652.41	(3,800.91)	2.27	4.28
DTD 04/30/2020 0.500% 04/30/2027										
US TREASURY N/B	91282CEN7	375,000.00	Citigrou		96.67	362,505.00	(8,862.19)	(10,802.21)	2.21	4.27
DTD 05/02/2022 2.750% 04/30/2027										
US TREASURY N/B	912828X88	600,000.00	HSBC		95.76	574,546.80	(10,992.26)	(18,410.22)	2.26	4.35
DTD 05/15/2017 2.375% 05/15/2027										
US TREASURY N/B	91282CET4	390,000.00	BMO		96.26	375,405.42	121.83	(633.14)	2.30	4.27
DTD 05/31/2022 2.625% 05/31/2027										
US TREASURY N/B	912828ZS2	1,200,000.00	MorganSt		91.43	1,097,109.60	36,890.85	3,886.94	2.35	4.36
DTD 06/01/2020 0.500% 05/31/2027										
US TREASURY N/B	91282CEW7	350,000.00	GoldmanS		97.64	341,755.75	(13,699.33)	(11,014.41)	2.37	4.26
DTD 06/30/2022 3.250% 06/30/2027										
US TREASURY N/B	91282CFB2	500,000.00	MorganSt		96.30	481,484.50	(14,980.34)	(16,690.71)	2.43	4.28
DTD 08/01/2022 2.750% 07/31/2027										
US TREASURY N/B	91282CAH4	480,000.00	BMO		90.59	434,831.04	(5,587.71)	(9,051.74)	2.59	4.36
DTD 08/31/2020 0.500% 08/31/2027										
US TREASURY N/B	91282CAH4	520,000.00	BMO		90.59	471,066.96	12,837.27	3,594.97	2.59	4.36
DTD 08/31/2020 0.500% 08/31/2027										
US TREASURY N/B	91282CAH4	1,200,000.00	WellsFar		90.59	1,087,077.60	8,999.47	(6,727.99)	2.59	4.36
DTD 08/31/2020 0.500% 08/31/2027										
US TREASURY N/B	91282CAL5	600,000.00	Nomura		89.98	539,859.60	351.79	(3,104.90)	2.68	4.29
DTD 09/30/2020 0.375% 09/30/2027										
US TREASURY N/B	91282CFU0	100,000.00	JPMorgan		99.59	99,593.80	(1,714.79)	(1,161.81)	2.63	4.28
DTD 10/31/2022 4.125% 10/31/2027										
US TREASURY N/B	91282CFU0	500,000.00	BOFAML		99.59	497,969.00	(5,253.66)	(3,923.56)	2.63	4.28
DTD 10/31/2022 4.125% 10/31/2027										
US TREASURY N/B	9128283F5	410,000.00	BMO		94.54	387,594.32	(1,249.04)	(1,757.75)	2.73	4.29
DTD 11/15/2017 2.250% 11/15/2027										

Managed Account Fair Market Value & Analytics

For the Month Ending December 31, 2024

CITY OF YORBA LINDA - 97480000

Security Type/Description Dated Date/Coupon/Maturity	CUSIP	Par	Broker	Next Call Date	Market Price	Market Value	Unreal G/L On Cost	Unreal G/L Amort Cost	Effective Duration	YTM at Mkt
U.S. Treasury Bond / Note										
US TREASURY N/B DTD 11/30/2022 3.875% 11/30/2027	91282CFZ9	420,000.00	JPMorgan		98.86	415,209.48	(6,316.30)	(5,682.17)	2.72	4.29
US TREASURY N/B DTD 02/01/2021 0.750% 01/31/2028	91282CBJ9	270,000.00	BMO		89.84	242,567.46	(126.68)	(847.08)	2.98	4.31
US TREASURY N/B DTD 01/31/2023 3.500% 01/31/2028	91282CGH8	450,000.00	JPMorgan		97.70	439,628.85	(7,541.07)	(8,625.62)	2.85	4.30
US TREASURY N/B DTD 02/15/2018 2.750% 02/15/2028	9128283W8	1,800,000.00	SGAS		95.47	1,718,508.60	(23,694.53)	(28,860.18)	2.92	4.31
US TREASURY N/B DTD 03/31/2023 3.625% 03/31/2028	91282CGT2	750,000.00	JPMorgan		97.93	734,472.75	(19,863.19)	(18,391.29)	3.00	4.31
US TREASURY N/B DTD 05/01/2023 3.500% 04/30/2028	91282CHA2	670,000.00	CABRERA		97.46	653,014.16	(13,688.19)	(14,789.21)	3.09	4.32
US TREASURY N/B DTD 05/15/2018 2.875% 05/15/2028	9128284N7	725,000.00	BOFAML		95.51	692,431.55	(6,117.28)	(14,672.44)	3.16	4.40
US TREASURY N/B DTD 05/31/2023 3.625% 05/31/2028	91282CHE4	750,000.00	JPMorgan		97.80	733,476.75	(14,003.72)	(14,803.07)	3.17	4.32
US TREASURY N/B DTD 08/02/2021 1.000% 07/31/2028	91282CCR0	95,000.00	WellsFar		89.01	84,561.12	(842.40)	(1,371.70)	3.44	4.34
US TREASURY N/B DTD 08/31/2023 4.375% 08/31/2028	91282CHX2	250,000.00	Barclays		100.07	250,166.00	732.41	584.01	3.31	4.34
US TREASURY N/B DTD 08/31/2023 4.375% 08/31/2028	91282CHX2	1,300,000.00	Barclays		100.07	1,300,863.20	(7,414.14)	(7,099.10)	3.31	4.34
US TREASURY N/B DTD 09/30/2021 1.250% 09/30/2028	91282CCY5	1,450,000.00	Nomura		89.36	1,295,711.30	(5,946.90)	(8,618.62)	3.58	4.43
US TREASURY N/B DTD 11/30/2021 1.500% 11/30/2028	91282CDL2	765,000.00	BNPPSA		89.80	686,976.12	5,558.34	(11,372.66)	3.73	4.44
US TREASURY N/B DTD 02/29/2024 4.250% 02/28/2029	91282CKD2	240,000.00	HSBC		99.52	238,846.80	(1,987.58)	(1,963.11)	3.73	4.36
US TREASURY N/B DTD 05/02/2022 2.875% 04/30/2029	91282CEM9	225,000.00	Citigrou		94.11	211,754.93	(3,585.89)	(4,032.39)	3.99	4.37
US TREASURY N/B DTD 05/31/2024 4.500% 05/31/2029	91282CKT7	360,000.00	JPMorgan		100.46	361,673.28	(4,120.47)	(4,055.01)	3.96	4.45
US TREASURY N/B DTD 09/30/2022 3.875% 09/30/2029	91282CFL0	235,000.00	Citigrou		97.81	229,859.38	(8,628.90)	(8,470.50)	4.25	4.38

Managed Account Fair Market Value & Analytics

For the Month Ending **December 31, 2024**

CITY OF YORBA LINDA - 97480000

Security Type/Description Dated Date/Coupon/Maturity	CUSIP	Par	Broker	Next Call Date	Market Price	Market Value	Unreal G/L On Cost	Unreal G/L Amort Cost	Effective Duration	YTM at Mkt
Security Type Sub-Total		27,500,000.00				26,144,666.70	(351,565.16)	(533,734.06)	2.46	4.31
Supra-National Agency Bond / Note										
INTL FINANCE CORP DTD 12/06/2023 4.375% 01/15/2027	45950KDF4	235,000.00	WellsFar		99.92	234,810.83	576.93	324.93	1.89	4.41
Security Type Sub-Total		235,000.00				234,810.83	576.93	324.93	1.89	4.41
Municipal Bond / Note										
SAN DIEGO WTR AUTH-A DTD 07/22/2020 0.743% 05/01/2025	797412DM2	260,000.00	BOFAML		98.81	256,905.22	(3,094.78)	(3,094.78)	0.33	4.44
UNIV OF CALIFORNIA-BF DTD 07/16/2020 0.933% 05/15/2025	91412HFM0	130,000.00	JPMorgan		98.72	128,340.03	(1,659.97)	(1,659.97)	0.36	4.44
FLORIDA ST BRD OF ADM DTD 09/16/2020 1.258% 07/01/2025	341271AD6	130,000.00	BOFAML		98.33	127,831.60	(3,087.50)	(2,264.31)	0.49	4.73
FLORIDA ST BRD OF ADM DTD 09/16/2020 1.258% 07/01/2025	341271AD6	275,000.00	BOFAML		98.33	270,413.00	(4,587.00)	(4,587.00)	0.49	4.73
SAN JUAN CA UNIF SCH DTD 10/29/2020 0.852% 08/01/2025	798306WP7	135,000.00	KEYB		97.92	132,185.79	(2,814.21)	(2,814.21)	0.57	4.57
LOS ANGELES UN SD-B DTD 11/10/2021 1.455% 07/01/2026	544647FC9	150,000.00	Barclays		95.78	143,672.40	(6,327.60)	(6,327.60)	1.46	4.42
CA ST UNIV TRUSTEES - DTD 08/09/2023 4.755% 11/01/2026	13077DTC6	110,000.00	Barclays		100.55	110,606.98	606.98	606.98	1.73	4.44
Security Type Sub-Total		1,190,000.00				1,169,955.02	(20,964.08)	(20,140.89)	0.68	4.55
Federal Agency Commercial Mortgage-Backed Security										
FHMS K058 A2 DTD 11/01/2016 2.653% 08/01/2026	3137BSP72	485,000.00	BREAN		97.06	470,719.66	6,142.71	(4,279.27)	1.55	4.47
FHMS K059 A2 DTD 11/01/2016 3.120% 09/01/2026	3137BSRE5	475,000.00	MorganSt		97.68	463,963.85	14,068.34	4,736.84	1.57	4.50
FHMS K061 A2 DTD 01/01/2017 3.347% 11/01/2026	3137BTUM1	341,259.97	Citigrou		97.60	333,074.51	2,318.96	(2,487.58)	1.71	4.65
FHMS K063 A2 DTD 03/01/2017 3.430% 01/01/2027	3137BVZ82	505,000.00	CantorFi		97.83	494,028.37	3,626.03	(2,756.31)	1.83	4.52

Managed Account Fair Market Value & Analytics

For the Month Ending **December 31, 2024**

CITY OF YORBA LINDA - 97480000

Security Type/Description Dated Date/Coupon/Maturity	CUSIP	Par	Broker	Next Call Date	Market Price	Market Value	Unreal G/L On Cost	Unreal G/L Amort Cost	Effective Duration	YTM at Mkt
Federal Agency Commercial Mortgage-Backed Security										
FHMS K064 A2 DTD 05/01/2017 3.224% 03/01/2027	3137BXOY1	495,000.00	MorganSt		97.26	481,433.54	14,509.32	3,837.49	1.96	4.54
FHMS K065 A2 DTD 07/01/2017 3.243% 04/01/2027	3137F1G44	500,000.00	Citigrou		97.08	485,400.00	6,278.91	(2,090.65)	2.11	4.56
FHMS K070 A2 DTD 12/01/2017 3.303% 11/01/2027	3137FCJK1	255,000.00	PNCBank		96.54	246,164.25	3,884.37	2,185.57	2.61	4.58
FHMS K074 A2 DTD 03/01/2018 3.600% 01/01/2028	3137F4D41	500,000.00	Barclays		97.07	485,348.00	2,242.53	294.27	2.78	4.60
FHMS KJ48 A1 DTD 12/01/2023 4.858% 05/01/2028	3137HBC69	372,040.43	JPMorgan		100.41	373,571.75	1,534.30	1,532.49	2.76	4.63
FHMS KJ46 A1 DTD 07/01/2023 4.777% 06/01/2028	3137HAD45	376,082.47	JPMorgan		99.71	374,996.34	(1,076.72)	(1,079.45)	2.28	4.80
FHMS K505 A2 DTD 07/01/2023 4.819% 06/01/2028	3137HACX2	465,000.00	JPMorgan		100.23	466,058.81	(3,585.61)	(2,222.37)	3.06	4.67
FNA 2023-M6 A2 DTD 07/01/2023 4.181% 07/01/2028	3136BODE6	449,103.76	JPMorgan		98.02	440,217.34	(1,272.70)	(3,437.14)	3.20	4.74
FHMS K508 A2 DTD 10/01/2023 4.740% 08/01/2028	3137HAO74	455,000.00	BMO		99.97	454,867.60	9,848.48	7,617.47	3.23	4.68
FHMS K506 A2 DTD 09/01/2023 4.650% 08/01/2028	3137HAMH6	470,000.00	WellsFar		99.78	468,981.04	5,933.75	4,278.60	3.20	4.65
FHMS K509 A2 DTD 10/01/2023 4.850% 09/01/2028	3137HAST4	340,000.00	MorganSt		100.39	341,326.00	12,166.22	9,984.07	3.30	4.67
FHMS K507 A2 DTD 09/01/2023 4.800% 09/01/2028	3137HAMS2	455,000.00	BOFAML		100.19	455,884.52	6,323.13	5,145.98	3.26	4.67
FHMS K510 A2 DTD 11/01/2023 5.069% 10/01/2028	3137HB3D4	175,000.00	JPMorgan		101.09	176,899.10	2,405.02	2,302.04	3.33	4.68
FHMS K511 A2 DTD 12/01/2023 4.860% 10/01/2028	3137HB3G7	265,000.00	BOFAML		100.32	265,855.16	1,616.50	1,465.90	3.37	4.70
FHMS K514 A2 DTD 02/01/2024 4.572% 12/01/2028	3137HBLV4	500,000.00	BMO		99.30	496,491.50	4,304.00	3,423.62	3.46	4.71
FHMS K524 A2 DTD 07/01/2024 4.720% 05/01/2029	3137HDV56	395,000.00	PIER		99.79	394,189.86	(3,235.83)	(3,076.10)	3.87	4.72
FHMS K522 A2 DTD 06/01/2024 4.803% 05/01/2029	3137HDJJ0	485,000.00	MorganSt		100.05	485,253.66	255.11	253.66	3.77	4.73

Managed Account Fair Market Value & Analytics

For the Month Ending **December 31, 2024**

CITY OF YORBA LINDA - 97480000

Security Type/Description Dated Date/Coupon/Maturity	CUSIP	Par	Broker	Next Call Date	Market Price	Market Value	Unreal G/L On Cost	Unreal G/L Amort Cost	Effective Duration	YTM at Mkt
Federal Agency Commercial Mortgage-Backed Security										
FHMS K526 A2 DTD 08/01/2024 4.543% 07/01/2029	3137HDXL9	440,000.00	BMO		99.02	435,673.04	(8,442.72)	(8,159.85)	4.02	4.74
FHMS K528 A2 DTD 09/01/2024 4.508% 07/01/2029	3137HFNZ4	500,000.00	MorganSt		98.91	494,560.50	(6,181.69)	(6,167.63)	4.03	4.73
FHMS K529 A2 DTD 10/01/2024 4.791% 09/01/2029	3137HH6C0	295,000.00	MorganSt		99.99	294,956.93	(5,939.24)	(5,716.48)	4.12	4.74
Security Type Sub-Total		9,993,486.63				9,879,915.33	67,723.17	5,585.17	2.90	4.65
Federal Agency Bond / Note										
FEDERAL HOME LOAN BANK (CALLABLE) DTD 02/10/2021 0.830% 02/10/2027	3130AKYH3	390,000.00	TD Secur	02/10/25	92.99	362,668.02	13,380.12	(8,151.05)	2.03	4.35
Security Type Sub-Total		390,000.00				362,668.02	13,380.12	(8,151.05)	2.03	4.35
Corporate Note										
STATE STREET CORP (CALLABLE) DTD 10/29/2020 2.901% 03/30/2026	857477BM4	230,000.00	JANE	03/30/25	99.50	228,850.00	(2,536.90)	(1,262.62)	0.24	6.69
BANK OF AMERICA CORP (CALLABLE) DTD 03/22/2022 3.384% 04/02/2026	06051GKM0	250,000.00	BOFAML	04/02/25	99.63	249,063.75	(936.25)	(936.25)	0.25	5.65
NATIONAL RURAL UTIL COOP (CALLABLE) DTD 02/24/2021 1.000% 06/15/2026	63743HEW8	210,000.00	Barclays	05/15/26	94.93	199,356.57	6,578.67	722.29	1.42	4.65
BANK OF NY MELLON CORP (CALLABLE) DTD 07/26/2022 4.414% 07/24/2026	06406RBJ5	75,000.00	MorganSt	07/24/25	99.73	74,798.03	(201.97)	(201.97)	0.54	5.51
BANK OF NY MELLON CORP (CALLABLE) DTD 07/27/2021 1.050% 10/15/2026	06406RAV9	240,000.00	Citigrou	09/15/26	94.06	225,733.92	9,376.32	719.85	1.73	4.57
AMERICAN EXPRESS CO (CALLABLE) DTD 11/04/2021 1.650% 11/04/2026	025816CM9	245,000.00	SUMITR	10/04/26	94.77	232,175.23	(12,418.07)	(12,673.37)	1.78	4.68
ADOBE INC (CALLABLE) DTD 02/03/2020 2.150% 02/01/2027	00724PAC3	120,000.00	GoldmanS	12/01/26	95.44	114,524.28	1,161.48	(2,449.64)	1.98	4.47
CISCO SYSTEMS INC (CALLABLE) DTD 02/26/2024 4.800% 02/26/2027	17275RBO4	240,000.00	Citigrou	01/26/27	100.72	241,737.12	(1,190.88)	(734.18)	1.96	4.45
CHARLES SCHWAB CORP (CALLABLE) DTD 03/03/2022 2.450% 03/03/2027	808513BY0	250,000.00	Citigrou	02/03/27	95.49	238,723.00	15,128.00	1,959.35	2.06	4.69

Managed Account Fair Market Value & Analytics

For the Month Ending **December 31, 2024**

CITY OF YORBA LINDA - 97480000

Security Type/Description	Next Call	Market	Market	Unreal G/L	Unreal G/L	Effective	YTM			
Dated Date/Coupon/Maturity	Date	Price	Value	On Cost	Amort Cost	Duration	at Mkt			
CUSIP	Par	Broker								
Corporate Note										
STATE STREET CORP (CALLABLE) DTD 03/18/2024 4.993% 03/18/2027	857477CL5	80,000.00	MorganSt	02/18/27	100.82	80,658.64	814.64	775.95	2.01	4.59
STATE STREET CORP (CALLABLE) DTD 03/18/2024 4.993% 03/18/2027	857477CL5	145,000.00	MorganSt	02/18/27	100.82	146,193.79	1,193.79	1,193.79	2.01	4.59
NIKE INC (CALLABLE) DTD 03/27/2020 2.750% 03/27/2027	654106AJ2	120,000.00	DAIW	01/27/27	96.41	115,686.12	414.12	(2,084.06)	2.10	4.45
GOLDMAN SACHS BANK USA (CALLABLE) DTD 05/21/2024 5.414% 05/21/2027	38151LAG5	190,000.00	GoldmanS	05/21/26	100.78	191,483.33	1,483.33	1,483.33	1.33	4.99
NATIONAL AUSTRALIA BK/NY DTD 06/11/2024 5.087% 06/11/2027	63253QAJ3	365,000.00	MUFG		101.12	369,104.79	3,531.74	3,631.09	2.27	4.59
ANALOG DEVICES INC (CALLABLE) DTD 09/18/2023 3.450% 06/15/2027	032654BA2	255,000.00	StifelNi	03/15/27	97.45	248,491.89	(3,159.96)	(3,466.23)	2.26	4.55
AMERICAN HONDA FINANCE DTD 07/10/2024 4.900% 07/09/2027	02665WFK2	110,000.00	Barclays		100.35	110,379.50	521.40	500.16	2.29	4.82
AMERICAN HONDA FINANCE DTD 07/10/2024 4.900% 07/09/2027	02665WFK2	240,000.00	Deutsche		100.35	240,828.00	(2,481.60)	(2,095.69)	2.29	4.82
AUST & NZ BANKING GRP NY DTD 07/16/2024 4.900% 07/16/2027	05253JB34	290,000.00	WellsFar		100.77	292,235.90	2,235.90	2,235.90	2.31	4.57
BLACKROCK FUNDING INC (CALLABLE) DTD 07/26/2024 4.600% 07/26/2027	09290DAH4	245,000.00	BOFAML	06/26/27	100.24	245,597.31	604.66	603.18	2.31	4.51
HONEYWELL INTERNATIONAL (CALLABLE) DTD 08/01/2024 4.650% 07/30/2027	438516CX2	145,000.00	JANE	06/30/27	100.36	145,517.22	(1,167.68)	(945.65)	2.32	4.51
HONEYWELL INTERNATIONAL (CALLABLE) DTD 08/01/2024 4.650% 07/30/2027	438516CX2	230,000.00	Deutsche	06/30/27	100.36	230,820.41	827.31	825.94	2.32	4.51
TRUIST FINANCIAL CORP (CALLABLE) DTD 08/03/2020 1.125% 08/03/2027	89788MAC6	130,000.00	MorganSt	06/03/27	91.09	118,418.30	4,630.60	(3,177.99)	2.48	4.92
PACCAR FINANCIAL CORP DTD 08/06/2024 4.450% 08/06/2027	69371RT30	120,000.00	MUFG		99.90	119,874.00	33.60	13.09	2.39	4.50
TOYOTA MOTOR CREDIT CORP DTD 10/10/2024 4.350% 10/08/2027	89236TMS1	130,000.00	Citigrou		99.29	129,075.31	(873.99)	(877.71)	2.56	4.61
TOYOTA MOTOR CREDIT CORP DTD 10/10/2024 4.350% 10/08/2027	89236TMS1	140,000.00	RBS		99.29	139,004.18	(1,050.42)	(1,046.79)	2.56	4.61
CATERPILLAR FINL SERVICE DTD 08/16/2024 4.400% 10/15/2027	14913UAR1	285,000.00	Citigrou		99.60	283,873.39	(1,850.51)	(1,769.86)	2.57	4.56

Managed Account Fair Market Value & Analytics

For the Month Ending December 31, 2024

CITY OF YORBA LINDA - 97480000

Security Type/Description Dated Date/Coupon/Maturity	CUSIP	Par	Broker	Next Call Date	Market Price	Market Value	Unreal G/L On Cost	Unreal G/L Amort Cost	Effective Duration	YTM at Mkt
Corporate Note										
BP CAP MARKETS AMERICA (CALLABLE) DTD 05/17/2024 5.017% 11/17/2027	10373OBY5	250,000.00	BNP Sec	10/17/27	101.09	252,712.50	2,705.00	2,706.06	2.60	4.61
JPMORGAN CHASE & CO (CALLABLE) DTD 01/23/2024 5.040% 01/23/2028	46647PEAO	200,000.00	JPMorgan	01/23/27	100.36	200,727.00	727.00	727.00	1.90	5.10
JPMORGAN CHASE & CO (CALLABLE) DTD 04/22/2024 5.571% 04/22/2028	46647PEE2	215,000.00	JPMorgan	04/22/27	101.71	218,671.13	3,671.13	3,671.13	2.13	4.94
CITIBANK NA (CALLABLE) DTD 09/29/2023 5.803% 09/29/2028	17325FBB3	445,000.00	Citigrou	08/29/28	103.11	458,850.63	13,850.63	13,850.63	3.26	4.87
LOCKHEED MARTIN CORP (CALLABLE) DTD 01/29/2024 4.500% 02/15/2029	539830CC1	250,000.00	JPMorgan	01/15/29	98.91	247,276.50	386.50	(79.64)	3.63	4.78
BRISTOL-MYERS SQUIBB CO (CALLABLE) DTD 02/22/2024 4.900% 02/22/2029	110122EF1	105,000.00	Citigrou	01/22/29	100.44	105,463.37	683.87	649.60	3.62	4.77
BRISTOL-MYERS SQUIBB CO (CALLABLE) DTD 02/22/2024 4.900% 02/22/2029	110122EF1	120,000.00	JPMorgan	01/22/29	100.44	120,529.56	240.36	285.98	3.62	4.77
ASTRAZENECA FINANCE LLC (CALLABLE) DTD 02/26/2024 4.850% 02/26/2029	04636NAL7	145,000.00	Citigrou	01/26/29	100.21	145,300.44	452.69	429.28	3.64	4.78
CISCO SYSTEMS INC (CALLABLE) DTD 02/26/2024 4.850% 02/26/2029	17275RBR2	255,000.00	Citigrou	01/26/29	100.63	256,605.22	1,694.47	1,680.14	3.64	4.66
BLACKROCK FUNDING INC (CALLABLE) DTD 03/14/2024 4.700% 03/14/2029	09290DAA9	45,000.00	Citigrou	02/14/29	100.09	45,039.92	121.37	109.46	3.70	4.64
TOYOTA MOTOR CREDIT CORP DTD 05/16/2024 5.050% 05/16/2029	89236TMF9	125,000.00	BOFAML		100.70	125,879.63	1,147.13	1,117.06	3.87	4.84
NATIONAL RURAL UTIL COOP (CALLABLE) DTD 05/10/2024 5.150% 06/15/2029	63743HFS6	170,000.00	JPMorgan	05/15/29	101.19	172,019.77	501.67	634.47	3.91	4.83
HOME DEPOT INC (CALLABLE) DTD 06/25/2024 4.750% 06/25/2029	437076DC3	120,000.00	MorganSt	05/25/29	100.21	120,253.92	1,027.92	956.30	3.97	4.69
HOME DEPOT INC (CALLABLE) DTD 06/25/2024 4.750% 06/25/2029	437076DC3	125,000.00	HSBC	05/25/29	100.21	125,264.50	663.25	625.98	3.97	4.69
HOME DEPOT INC (CALLABLE) DTD 06/25/2024 4.750% 06/25/2029	437076DC3	125,000.00	MAXE	05/25/29	100.21	125,264.50	633.25	598.60	3.97	4.69
TOYOTA MOTOR CREDIT CORP DTD 08/09/2024 4.550% 08/09/2029	89236TMK8	65,000.00	MIZU		98.82	64,230.73	(637.32)	(646.71)	4.04	4.89
ELI LILLY & CO (CALLABLE) DTD 08/14/2024 4.200% 08/14/2029	532457CO9	80,000.00	MorganSt	07/14/29	98.05	78,440.88	(1,383.92)	(1,396.29)	4.06	4.65

Managed Account Fair Market Value & Analytics

For the Month Ending **December 31, 2024**

CITY OF YORBA LINDA - 97480000

Security Type/Description	CUSIP	Par	Broker	Next Call Date	Market Price	Market Value	Unreal G/L On Cost	Unreal G/L Amort Cost	Effective Duration	YTM at Mkt
Corporate Note										
ACCENTURE CAPITAL INC (CALLABLE) DTD 10/04/2024 4.050% 10/04/2029	00440KAB9	170,000.00	JPMorgan	09/04/29	97.02	164,925.50	(4,777.00)	(4,790.51)	4.21	4.75
COOPERAT RABOBANK UA/NY DTD 10/17/2024 4.494% 10/17/2029	21688ABH4	500,000.00	RBS		98.03	490,158.00	(7,062.00)	(7,158.77)	4.22	4.94
STATE STREET BANK & TR DTD 11/25/2024 4.782% 11/23/2029	857449AE2	375,000.00	MorganSt		99.73	373,995.00	(1,005.00)	(1,005.00)	4.30	4.80
BP CAP MARKETS AMERICA (CALLABLE) DTD 11/25/2024 4.868% 11/25/2029	10373OCB4	125,000.00	BOFAML	10/25/29	100.04	125,050.13	50.13	50.13	4.27	4.83
Security Type Sub-Total		9,090,000.00				9,028,862.81	34,358.46	(6,043.19)	2.68	4.79
Certificate of Deposit										
COOPERAT RABOBANK UA/NY DTD 07/20/2023 5.080% 07/17/2026	21684LGS5	705,000.00	RABO UA		101.94	718,691.10	13,691.10	13,691.10	1.45	3.77
NATIXIS NY BRANCH DTD 09/20/2023 5.610% 09/18/2026	63873QP65	340,000.00	WellsFar		102.46	348,368.76	8,368.76	8,368.76	1.63	4.05
CREDIT AGRICOLE CIB NY DTD 02/05/2024 4.760% 02/01/2027	22536DWD6	365,000.00	CRAG		99.51	363,199.09	(1,800.91)	(1,800.91)	1.91	4.94
Security Type Sub-Total		1,410,000.00				1,430,258.95	20,258.95	20,258.95	1.61	4.14
Bank Note										
WELLS FARGO BANK NA (CALLABLE) DTD 08/09/2023 5.450% 08/07/2026	94988J6D4	470,000.00	WellsFar	07/07/26	101.20	475,626.37	5,663.97	5,646.46	1.44	4.68
CITIBANK NA (CALLABLE) DTD 12/04/2023 5.488% 12/04/2026	17325FBC1	250,000.00	Citigrou	11/04/26	101.48	253,690.50	3,690.50	3,690.50	1.76	4.65
MORGAN STANLEY BANK NA (CALLABLE) DTD 01/18/2024 4.952% 01/14/2028	61690U8A1	500,000.00	JANE	01/14/27	100.14	500,676.00	7,776.00	6,607.59	1.87	5.10
MORGAN STANLEY BANK NA (CALLABLE) DTD 05/30/2024 5.504% 05/26/2028	61690U8B9	250,000.00	BOFAML	05/26/27	101.39	253,485.50	3,183.00	3,238.23	2.23	5.01
Security Type Sub-Total		1,470,000.00				1,483,478.37	20,313.47	19,182.78	1.77	4.87
Asset-Backed Security										

Managed Account Fair Market Value & Analytics

For the Month Ending **December 31, 2024**

CITY OF YORBA LINDA - 97480000

Security Type/Description Dated Date/Coupon/Maturity	CUSIP	Par	Broker	Next Call Date	Market Price	Market Value	Unreal G/L On Cost	Unreal G/L Amort Cost	Effective Duration	YTM at Mkt
Asset-Backed Security										
KCOT 2021-2A A3 DTD 07/28/2021 0.560% 11/17/2025	50117XAE2	3,990.93	SUMITR		99.84	3,984.70	(6.07)	(6.19)	0.04	4.33
CARMX 2021-3 A3 DTD 07/28/2021 0.550% 06/15/2026	14317DAC4	44,078.95	RBC Capi		99.24	43,745.89	(325.82)	(330.90)	0.20	4.29
HAROT 2022-2 A3 DTD 08/24/2022 3.730% 07/20/2026	43815PAC3	38,933.94	SUMITR		99.66	38,802.11	(129.51)	(130.90)	0.43	4.49
CARMX 2022-3 A3 DTD 07/20/2022 3.970% 04/15/2027	14318MAD1	201,103.73	RBC Capi		99.70	200,493.38	(605.60)	(608.05)	0.57	4.50
COPAR 2022-2 A3 DTD 08/10/2022 3.660% 05/17/2027	14043GAD6	102,823.93	JPMorgan		99.46	102,271.35	(545.22)	(548.91)	0.63	4.52
Security Type Sub-Total		390,931.47				389,297.43	(1,612.22)	(1,624.95)	0.52	4.48
Managed Account Sub-Total		51,669,418.10				50,123,913.46	(217,530.36)	(524,342.31)	2.48	4.48
Securities Sub-Total		\$51,669,418.10				\$50,123,913.46	(\$217,530.36)	(\$524,342.31)	2.48	4.49%
Accrued Interest						\$345,005.04				
Total Investments						\$50,468,918.50				

Managed Account Security Transactions & Interest

For the Month Ending **December 31, 2024**

CITY OF YORBA LINDA - 97480000

Transaction Type	Trade	Settle	Security Description	CUSIP	Par	Principal Proceeds	Accrued Interest	Total	Realized G/L Cost	Realized G/L Amort Cost	Sale Method
BUY											
	12/02/24	12/05/24	US TREASURY N/B DTD 09/30/2021 1.250% 09/30/2028	91282CCY5	1,450,000.00	(1,301,658.20)	(3,286.40)	(1,304,944.60)			
	12/03/24	12/05/24	US TREASURY N/B DTD 11/15/2017 2.250% 11/15/2027	9128283F5	410,000.00	(388,843.36)	(509.67)	(389,353.03)			
	12/11/24	12/12/24	US TREASURY N/B DTD 05/31/2024 4.500% 05/31/2029	91282CKT7	360,000.00	(365,793.75)	(534.07)	(366,327.82)			
	12/13/24	12/16/24	US TREASURY N/B DTD 09/30/2024 3.500% 09/30/2026	91282CLP4	225,000.00	(222,152.34)	(1,665.87)	(223,818.21)			
Transaction Type Sub-Total					2,445,000.00	(2,278,447.65)	(5,996.01)	(2,284,443.66)			

INTEREST											
	12/01/24	12/25/24	FNA 2023-M6 A2 DTD 07/01/2023 4.181% 07/01/2028	3136BODE6		0.00	1,564.83	1,564.83			
	12/01/24	12/25/24	FHMS K064 A2 DTD 05/01/2017 3.224% 03/01/2027	3137BXOY1		0.00	1,329.90	1,329.90			
	12/01/24	12/25/24	FHMS KJ48 A1 DTD 12/01/2023 4.858% 05/01/2028	3137HBC69		0.00	1,510.62	1,510.62			
	12/01/24	12/25/24	FHMS K070 A2 DTD 12/01/2017 3.303% 11/01/2027	3137FCJK1		0.00	701.89	701.89			
	12/01/24	12/25/24	FHMS K063 A2 DTD 03/01/2017 3.430% 01/01/2027	3137BVZ82		0.00	1,443.46	1,443.46			
	12/01/24	12/25/24	FHMS K509 A2 DTD 10/01/2023 4.850% 09/01/2028	3137HAST4		0.00	1,374.17	1,374.17			
	12/01/24	12/25/24	FHMS K508 A2 DTD 10/01/2023 4.740% 08/01/2028	3137HAQ74		0.00	1,797.25	1,797.25			
	12/01/24	12/25/24	FHMS K507 A2 DTD 09/01/2023 4.800% 09/01/2028	3137HAMS2		0.00	1,820.00	1,820.00			
	12/01/24	12/25/24	FHMS K506 A2 DTD 09/01/2023 4.650% 08/01/2028	3137HAMH6		0.00	1,821.25	1,821.25			
	12/01/24	12/25/24	FHMS K059 A2 DTD 11/01/2016 3.120% 09/01/2026	3137BSRE5		0.00	1,235.00	1,235.00			
	12/01/24	12/25/24	FHMS K505 A2 DTD 07/01/2023 4.819% 06/01/2028	3137HACX2		0.00	1,867.36	1,867.36			

Managed Account Security Transactions & Interest

For the Month Ending **December 31, 2024**

CITY OF YORBA LINDA - 97480000

Transaction Type	Trade	Settle	Security Description	CUSIP	Par	Principal Proceeds	Accrued Interest	Total	Realized G/L Cost	Realized G/L Amort Cost	Sale Method
INTEREST											
	12/01/24	12/25/24	FHMS K511 A2 DTD 12/01/2023 4.860% 10/01/2028	3137HB3G7		0.00	1,073.25	1,073.25			
	12/01/24	12/25/24	FHMS K058 A2 DTD 11/01/2016 2.653% 08/01/2026	3137BSP72		0.00	1,072.25	1,072.25			
	12/01/24	12/25/24	FHMS KJ46 A1 DTD 07/01/2023 4.777% 06/01/2028	3137HAD45		0.00	1,498.36	1,498.36			
	12/01/24	12/25/24	FHMS K529 A2 DTD 10/01/2024 4.791% 09/01/2029	3137HH6C0		0.00	1,177.79	1,177.79			
	12/01/24	12/25/24	FHMS K514 A2 DTD 02/01/2024 4.572% 12/01/2028	3137HBLV4		0.00	1,905.00	1,905.00			
	12/01/24	12/25/24	FHMS K528 A2 DTD 09/01/2024 4.508% 07/01/2029	3137HFNZ4		0.00	1,878.33	1,878.33			
	12/01/24	12/25/24	FHMS K522 A2 DTD 06/01/2024 4.803% 05/01/2029	3137HDJJ0		0.00	1,941.21	1,941.21			
	12/01/24	12/25/24	FHMS K061 A2 DTD 01/01/2017 3.347% 11/01/2026	3137BTUM1		0.00	953.82	953.82			
	12/01/24	12/25/24	FHMS K074 A2 DTD 03/01/2018 3.600% 01/01/2028	3137F4D41		0.00	1,500.00	1,500.00			
	12/01/24	12/25/24	FHMS K065 A2 DTD 07/01/2017 3.243% 04/01/2027	3137F1G44		0.00	1,351.25	1,351.25			
	12/01/24	12/25/24	FHMS K526 A2 DTD 08/01/2024 4.543% 07/01/2029	3137HDXL9		0.00	1,665.77	1,665.77			
	12/01/24	12/25/24	FHMS K510 A2 DTD 11/01/2023 5.069% 10/01/2028	3137HB3D4		0.00	739.23	739.23			
	12/01/24	12/25/24	FHMS K524 A2 DTD 07/01/2024 4.720% 05/01/2029	3137HDV56		0.00	1,553.67	1,553.67			
	12/02/24	12/02/24	MONEY MARKET FUND DTD 01/01/2010 0.000% --	MONEY0002		0.00	929.50	929.50			
	12/04/24	12/04/24	CITIBANK NA (CALLABLE) DTD 12/04/2023 5.488% 12/04/2026	17325FBC1		0.00	6,860.00	6,860.00			
	12/11/24	12/11/24	NATIONAL AUSTRALIA BK/NY DTD 06/11/2024 5.087% 06/11/2027	63253QAJ3		0.00	9,283.78	9,283.78			
	12/11/24	12/11/24	JOHN DEERE CAPITAL CORP DTD 06/11/2024 4.850% 06/11/2029	24422EXT1		0.00	8,730.00	8,730.00			

Managed Account Security Transactions & Interest

For the Month Ending **December 31, 2024**

CITY OF YORBA LINDA - 97480000

Transaction Type	Trade	Settle	Security Description	CUSIP	Par	Principal Proceeds	Accrued Interest	Total	Realized G/L Cost	Realized G/L Amort Cost	Sale Method
INTEREST											
	12/15/24	12/15/24	ANALOG DEVICES INC (CALLABLE) DTD 09/18/2023 3.450% 06/15/2027	032654BA2		0.00	4,398.75	4,398.75			
	12/15/24	12/15/24	KCOT 2021-2A A3 DTD 07/28/2021 0.560% 11/17/2025	50117XAE2		0.00	3.98	3.98			
	12/15/24	12/15/24	CARMX 2022-3 A3 DTD 07/20/2022 3.970% 04/15/2027	14318MAD1		0.00	717.95	717.95			
	12/15/24	12/15/24	COPAR 2022-2 A3 DTD 08/10/2022 3.660% 05/17/2027	14043GAD6		0.00	337.60	337.60			
	12/15/24	12/15/24	NATIONAL RURAL UTIL COOP (CALLABLE) DTD 02/24/2021 1.000% 06/15/2026	63743HEW8		0.00	1,050.00	1,050.00			
	12/15/24	12/15/24	NATIONAL RURAL UTIL COOP (CALLABLE) DTD 05/10/2024 5.150% 06/15/2029	63743HFS6		0.00	5,228.68	5,228.68			
	12/15/24	12/15/24	CARMX 2021-3 A3 DTD 07/28/2021 0.550% 06/15/2026	14317DAC4		0.00	24.47	24.47			
	12/18/24	12/18/24	HAROT 2022-2 A3 DTD 08/24/2022 3.730% 07/20/2026	43815PAC3		0.00	134.30	134.30			
	12/25/24	12/25/24	HOME DEPOT INC (CALLABLE) DTD 06/25/2024 4.750% 06/25/2029	437076DC3		0.00	8,787.50	8,787.50			
	12/31/24	12/31/24	US TREASURY N/B DTD 12/31/2020 0.375% 12/31/2025	91282CBC4		0.00	1,678.13	1,678.13			
	12/31/24	12/31/24	US TREASURY N/B DTD 06/30/2021 0.875% 06/30/2026	91282CCJ8		0.00	1,115.63	1,115.63			
	12/31/24	12/31/24	US TREASURY N/B DTD 06/30/2022 3.250% 06/30/2027	91282CEW7		0.00	5,687.50	5,687.50			
Transaction Type Sub-Total						0.00	89,743.43	89,743.43			

PAYDOWNS											
	12/01/24	12/25/24	FHMS KJ48 A1 DTD 12/01/2023 4.858% 05/01/2028	3137HBC69	1,106.25	1,106.25	0.00	1,106.25	0.00	0.00	
	12/01/24	12/25/24	FHMS KJ46 A1 DTD 07/01/2023 4.777% 06/01/2028	3137HAD45	311.94	311.94	0.00	311.94	0.01	0.01	

Managed Account Security Transactions & Interest

For the Month Ending **December 31, 2024**

CITY OF YORBA LINDA - 97480000

Transaction Type	Trade	Settle	Security Description	CUSIP	Par	Principal Proceeds	Accrued Interest	Total	Realized G/L Cost	Realized G/L Amort Cost	Sale Method
PAYDOWNS											
	12/01/24	12/25/24	FNA 2023-M6 A2 DTD 07/01/2023 4.181% 07/01/2028	3136BODE6	2.87	2.87	0.00	2.87	0.05	0.04	
	12/01/24	12/25/24	FHMS K061 A2 DTD 01/01/2017 3.347% 11/01/2026	3137BTUM1	714.64	714.64	0.00	714.64	22.00	12.46	
	12/15/24	12/15/24	CARMX 2022-3 A3 DTD 07/20/2022 3.970% 04/15/2027	14318MAD1	15,908.48	15,908.48	0.00	15,908.48	0.38	0.19	
	12/15/24	12/15/24	COPAR 2022-2 A3 DTD 08/10/2022 3.660% 05/17/2027	14043GAD6	7,865.72	7,865.72	0.00	7,865.72	0.56	0.28	
	12/15/24	12/15/24	CARMX 2021-3 A3 DTD 07/28/2021 0.550% 06/15/2026	14317DAC4	9,307.02	9,307.02	0.00	9,307.02	1.53	0.47	
	12/15/24	12/15/24	KCOT 2021-2A A3 DTD 07/28/2021 0.560% 11/17/2025	50117XAE2	4,535.97	4,535.97	0.00	4,535.97	0.17	0.03	
	12/18/24	12/18/24	HAROT 2022-2 A3 DTD 08/24/2022 3.730% 07/20/2026	43815PAC3	4,273.84	4,273.84	0.00	4,273.84	0.26	0.10	
Transaction Type Sub-Total					44,026.73	44,026.73	0.00	44,026.73	24.96	13.58	
SELL											
	12/02/24	12/05/24	US TREASURY N/B DTD 01/17/2023 3.875% 01/15/2026	91282CGE5	200,000.00	198,992.19	3,011.55	202,003.74	(1,078.12)	(1,034.31)	FIFO
	12/02/24	12/05/24	US TREASURY N/B DTD 11/15/2022 4.500% 11/15/2025	91282CFW6	275,000.00	275,290.04	683.70	275,973.74	(2,545.90)	(620.95)	FIFO
	12/02/24	12/05/24	US TREASURY N/B DTD 11/30/2020 0.375% 11/30/2025	91282CAZ4	225,000.00	216,360.35	11.59	216,371.94	(5,862.31)	(7,992.08)	FIFO
	12/03/24	12/05/24	UNITED PARCEL SERVICE (CALLABLE) DTD 11/14/2017 3.050% 11/15/2027	911312BM7	410,000.00	395,982.10	694.72	396,676.82	2,119.70	617.86	FIFO
	12/11/24	12/12/24	JOHN DEERE CAPITAL CORP DTD 06/11/2024 4.850% 06/11/2029	24422EXT1	360,000.00	366,411.60	48.50	366,460.10	6,994.80	6,942.14	FIFO
	12/13/24	12/16/24	JPMORGAN CHASE & CO (CALLABLE) DTD 07/21/2016 2.950% 10/01/2026	46625HRV4	230,000.00	224,181.00	1,413.54	225,594.54	(18,922.10)	(10,653.95)	FIFO
Transaction Type Sub-Total					1,700,000.00	1,677,217.28	5,863.60	1,683,080.88	(19,293.93)	(12,741.29)	
Managed Account Sub-Total							(557,203.64)	89,611.02	(467,592.62)	(19,268.97)	(12,727.71)

Managed Account Security Transactions & Interest

For the Month Ending **December 31, 2024**

CITY OF YORBA LINDA - 97480000

Total Security Transactions	(\$557,203.64)	\$89,611.02	(\$467,592.62)	(\$19,268.97)	(\$12,727.71)
------------------------------------	-----------------------	--------------------	-----------------------	----------------------	----------------------