



CITY of YORBA LINDA

TRAFFIC COMMISSION MEETING AGENDA

Thursday, April 24, 2025, 6:30 p.m.

Council Chambers

4845 Casa Loma Avenue

Pages

1. **CALL TO ORDER**

The Yorba Linda Traffic Commission will convene at 6:30 p.m. in the Council Chambers at 4845 Casa Loma Avenue, Yorba Linda, California.

2. **PLEDGE OF ALLEGIANCE**

3. **ROLL CALL**

Traffic Commissioners: Cugini, De Santos, Johnson, Phayakapong

4. **ADMINISTER OATH OF OFFICE TO NEW TRAFFIC COMMISSIONER**

5. **SECOND ROLL CALL**

Traffic Commissioners: Cugini, De Santos, Johnson, Phayakapong, Patel

6. **APPROVAL OF MINUTES**

3

6.a Approval of the March 27, 2025 Traffic Commission meeting minutes.

7. **PUBLIC COMMENTS**

There is a five (5) minute maximum time limit for each individual addressing the Traffic Commission during Public Comments and on all other items listed on the Agenda. Public Comment is the time reserved on each regular meeting Agenda to provide an opportunity for members of the public to directly address the Traffic Commission on matters of interest that are not already scheduled for consideration on this Agenda. Although the Traffic Commission values your comments, pursuant to the Brown Act, the Traffic Commission cannot take any action on items not listed on the posted Agenda but may refer the matter to staff or a subsequent meeting.

All remarks shall be addressed to the Traffic Commission as a body through the presiding officer and not directly to any member thereof. The Traffic Commission desires its meetings to be conducted in a professional manner respectful of all participants; therefore, the Chairman may ask that speakers refrain from

engaging in personal attacks and name-calling during their allotted time. However, public criticism of the policies, procedures, programs or services of the City, or of the acts or omissions of the Traffic Commission as a body shall not be prohibited.

The Chair may use his or her discretion to select the order of speakers in a manner that ensures that a variety of issues and concerns can be presented during the initial time and he or she may allow for additional comments to be made past the time allotted. As a result, in situations where there are multiple speakers wishing to speak on a single topic not on the agenda, the Chair may ask that one speaker generally describe the issue or matter and then will provide additional speakers the opportunity to speak later on this topic.

8. NEW BUSINESS

- 8.a AVOCADO AVENUE TEMPORARY STREET CLOSURE - TC-PW-25-005 11

9. OLD BUSINESS

- 9.a BASTANCHURY ROAD TEMPORARY STREET CLOSURES – OC LOOP SEGMENT D PROJECT - TC-PW-25-004 19

10. DIRECTOR'S REPORT

11. INFORMATIONAL ITEMS

- 11.a Traffic Reports March 2025 31

12. COMMISSIONER COMMENTS

13. ADJOURNMENT

The next regularly scheduled Traffic Commission Meeting is May 22, 2025.

NOTE: ALL STAFF REPORTS AND RELATED ATTACHMENTS FOR ITEMS ON THIS AGENDA ARE ON FILE IN THE ENGINEERING DEPARTMENT. AS AN ADDITIONAL SERVICE, THE CITY NOW PROVIDES THE STAFF REPORTS AND RELATED ATTACHMENTS ON THE CITY'S WEBSITE. PLEASE NOTE THAT IT IS NOT ALWAYS POSSIBLE TO EMBED ALL ATTACHMENTS AND MAPS. THUS, IF YOU REQUIRE A FULL AND COMPLETE COPY OF THE AGENDA PACKET, YOU SHOULD NOT RELY UPON THE WEBSITE MATERIALS ALONE.

IN COMPLIANCE WITH THE AMERICANS WITH DISABILITIES ACT (ADA), THE CITY WILL MAKE EVERY REASONABLE ATTEMPT TO ACCOMMODATE ANY ATTENDEE OR PARTICIPANT AT THIS MEETING NEEDING SPECIAL ASSISTANCE BEYOND WHAT IS NORMALLY PROVIDED. PLEASE CONTACT THE ENGINEERING DEPARTMENT AT (714) 961-7170 AT LEAST 48 HOURS PRIOR TO THIS MEETING TO INFORM US OF YOUR PARTICULAR NEEDS AND TO DETERMINE IF ACCOMMODATION IS FEASIBLE. PLEASE ADVISE US AT THE TIME YOU CALL IF SPECIAL ASSISTANCE IS REQUIRED TO ATTEND OR PARTICIPATE IN MEETINGS ON A REGULAR BASIS.

THE TRAFFIC COMMISSION IS AN ADVISORY COMMISSION TO THE CITY COUNCIL. RECOMMENDATIONS ARE FORWARDED TO THE CITY COUNCIL FOR FINAL DECISION.



CITY of YORBA LINDA

TRAFFIC COMMISSION MEETING

MINUTES

March 27, 2024, 6:30p.m.

Council Chambers

4845 Casa Loma Avenue

Commissioners: Cugini, De Santos, Johnson, Phayakapong,
Present:

Staff Present: Lai, Wang, Hu, Garcia Del Rio, Garcia-Barrera

Applicants: County of Orange
Ravi Shah, Mark Thomas Design Project Manager
Teejay Areopagita, County of Orange Project Manager
Chuck Karunathilake, Mark Thomas Designer

1. **CALL TO ORDER**

The Yorba Linda Traffic Commission convened at 6:35p.m. in the Council Chambers at 4845 Casa Loma Avenue, Yorba Linda, California.

2. **PLEDGE OF ALLEGIANCE**

Jamie Lai, Director of Public Works/City Engineer led the flag salute.

3. **ROLL CALL**

Traffic Commissioners Present:

Cugini, De Santos, Johnson, Phayakapong

4. **ADMISTER OATH OF OFFICE TO NEW TRAFFIC COMMISIONERS**

Jamie Lai, Public Works Director, invited Anthony Johnson to stand and raise his right hand for the oath: The Oath was administered.

Jamie Lai, Public Works Director, invited Sean Phayakapong to stand and raise his right hand for the oath: The Oath was administered.

5. **SECOND ROLL CALL**

Traffic Commissioners Present:

Cugini, De Santos, Johnson, Phayakapong

6. **APPROVAL OF MINUTES**

6a. Approval of the October 24, 2024, Traffic Commission Meeting Minutes.

Moved by Phayakapong

Seconded by De Santos

That the Commission approve the October 24, 2024, Traffic Commission meeting minutes.

Carried Unanimously

7. **PUBLIC COMMENTS**

Chairman Cugini opened the public comment portion of this item. Seeing none, Chairman Cugini closed the public comment portion of the item.

8. **NEW BUSINESS**

8.a BASTUNCHURY ROAD TEMPORARY STREET CLOSURE-OC LOOP
SEGMENT D PROJECT – TC- PW-25-001

Tony Wang, Traffic Engineering Manager, presented the staff report recommending that the Traffic Commission approve the temporary street closures on Bastanchury Road at Carbon Canyon Channel.

Traffic Engineering Manager, Tony Wang, introduced Ravi Shah, Mark Thomas Project Manager representing Orange County Public Works.

Project Manager Ravi Shah, delivered a presentation on the project, providing detailed information such as closures and maps.

Chairman Cugini opened the public comments portion of this item.

Resident Scott Griffith expressed opposition to the project's suggested detour route, raising concerns about the age and historical significance of the Golden

Avenue Bridge within the City of Placentia. He voiced concerns that the proposed detour route could result in increased traffic, which may place excessive strain on the structure due to its age and narrow width creating safety issues. Additionally, he expressed concerns about the impact on residents who will have to deal with additional traffic with limited access on Golden Avenue during the proposed closure.

Chairman Cugini closed the public comments portion of this item.

Chairman Cugini opened the comments to the Commission.

Commissioner Johnson inquired about the correspondence sent regarding the project. He also requested information on the average traffic on Bastanchury Road and whether the nearby school had been informed. Mr. Wang indicated that the estimated average daily traffic volume is approximately 15,000 vehicles. He also noted that the school should be included as a recipient of the notification letters.

Commissioner Johnson suggested that traffic be redirected to Imperial Highway or Yorba Linda Boulevard to reduce congestion in residential areas.

Commissioner De Santos inquired about the traffic control configuration at both ends of the proposed closure, leading to further discussion with the Project Manager.

Chairman Cugini requested information on estimate on the time delays that residents may experience while using the detour route.

Commissioner Phayakapong asked for clarification of the total number of working days and requested clarification on the specific dates.

Chairman Cugini commented on the Golden Avenue Bridge project and the involvement of the City of Placentia. Golden Avenue was proposed as the primary detour route early on with the anticipation that the bridge would be replaced last year. However, due to funding delays, the City of Placentia has now rescheduled the bridge replacement project for late 2025 or early 2026. Chairman Cugini emphasized the need for clear communication regarding the project timeline and the detour duration. He stressed the importance of identifying alternative detour routes are essential and should be accompanied by advance warning signage. He also requested the detour routing maps for review, but they were provided as part of the Staff Report package.

Chairman Cugini then asked the County representative to elaborate on any community outreach conducted for the project. The County representative stated that no formal community meetings had yet been held beyond the early right-of-way phase. However, notifications were sent to adjacent neighborhood ahead of

this Traffic Commission meeting to inform them of the upcoming Bastanchury Road closure.

Chairman Cugini stressed the importance of proactive community outreach and ensuring proper public notice is given in advance.

Jamie Lai, Public Works Director, indicated that the Commission comments and recommendations will be reviewed and addressed as part of the project approval. Director Lai added that City staff has experience with similar projects such as the Bastanchury Road widening. She emphasized the importance of advance notice, focusing on arterial detours, avoiding residential areas, and providing clear advance signage. Director Lai highlighted the need to collaborate between the County and City staff to develop a strong public information campaign, with the County producing the content and the City distributing it. The Project Manager Ravi Shah confirmed that they are committed to working with City staff to finalize the detour routes and will coordinate with the Public Information Officer to ensure additional community notifications are issued.

Chairman Cugini closed the comment portion of this item.

Moved by Johnson

Seconded by Phayakapong

It is recommended that the County return with revisions reflecting the recommendations and suggestions put forth by the Commission and bring the item back at a future meeting.

Carried Unanimously

8.b MAIN STREET AND ARROYO WAY TEMPORARY STREET CLOSURES- TC-PW-25-002

Tony Wang, Traffic Engineering Manager presented the staff report recommending that the Traffic Commission.

1. Approve temporary street closures on Main Street (from just north of the Yorba Linda Town Center entrance to Lemon Drive) and Arroyo Way (from Main Street to Valencia Avenue) for special events in 2025.

2. Recommend that the City Council authorize the Director of Public Works/City Engineer to approve future street closure requests within these limits, unless substantial changes necessitate reconsideration by the Traffic Commission. This authorization applies to all special events with the same street closure limits on Main Street and Arroyo Way.

Chairman Cugini opened the Public Comments portion of this item.

Seeing none, Chairman Cugini closed the Public Comments portion of this item.

Chairman Cugini opened comments to the Commission.

Commissioner Johnson posed questions to staff, expressed support for the project and recommended the inclusion of a heavy-duty vehicle as an additional public safety measure.

Commissioner Phayakapong commended previous applicants who have made the necessary corrections to remain in compliance.

A discussion ensued between the Commission and Staff.

Commissioner De Santos supported the proposed street closures.

Chairman Cugini expressed support for the proposed street closures and recommended ensuring that access to the firehouse remains unobstructed during the event.

Moved by De Santos

Seconded by Phayakapong

It is recommended that the Traffic Commission approve the temporary street closures on Main Street.

Carried Unanimously

8.c PROPOSED CAPITAL IMPROVEMENT PROGRAM PROJECTS FOR FISCAL YEAR 2025/26 AND 2026/27- TC-PW-25-003

Jamie Lai, Public Works Director, gave a presentation regarding the proposed Capital Improvement Program Projects for Fiscal Year 2025/26 and 2026/27.

Chairman Cugini opened the public comments portion of this item.

Seeing none, Chairman Cugini closed the public comments portion of this item.

Chairman Cugini opened comments to the Commission.

A discussion ensued between the Commission and Staff.

The Commission expressed its appreciation to the staff for their contributions and looks forward to reviewing upcoming projects.

Chairman Cugini closed the comment portion of this item.

Moved by Johnson

Seconded by Phayakapong

To receive and file to receive and file the Proposed Capital Improvement Plan.

9. **DIRECTOR'S REPORT**

Jamie Lai, Public Works Director, shared the following updates:

- Red curbs adjacent to Las Palomas Park have been painted to address previous concerns, and the Parks and Recreation Department have also implemented additional improvements and schedule adjustments regarding Pickleball court use.
- Currently collaborating to showcase online updates for CIP projects and enable residents to stay informed about the status of these projects.
- An installation is scheduled to place a sign indication of the route for larger truck traffic in the area surrounding the Trader Joe's shopping center.

10. **INFORMATIONAL ITEMS**

10.a TRAFFIC INCIDENT REPORTS OCTOBER 2024- FEBRUARY 2025

Jamie Lai, Public Works Director, stated that the Traffic Incident reports have been streamlined and introduced Administrative Deputy Ryan Reneau, who assisted in compiling them.

Deputy Reneau stated that the changes made to the reports were based on the most current information available. He noted that the initial details in the reports may not always be accurate, as they are subject to investigation following the incident. As a precaution, it is important to ensure that the most accurate and verified information is provided to the Commission and the public.

Commissioner Johnson inquired with Deputy Reneau about potential measures that could be implemented at the intersection of La Palma and Gypsum, in relation to recent traffic concerns. He also asked whether the "Every 15 Minutes" program would be reinstated. Deputy Reneau responded that he would follow up with the Commission at a later time.

A discussion ensued between the Commission and Deputy Reneau.

Deputy Reneau also announced that they are at the final stage of training for a new Deputy and should be fully staff by next week.

Chairman Cugini asked whether the addition of a second motorcycle officer would provide coverage seven days a week. Deputy Reneau confirmed that the addition would result in seven-day coverage.

Moved by Phayakapong
Seconded by Johnson

To receive and file Traffic Incident Reports from October 2024- March 2025.

Carried Unanimously

11. COMMISSIONER ITEMS

11.a SELECTION OF CHAIR FOR THE 2025

Chairman Cugini opened a discussion regarding nominations for the Chair of the Traffic Commission for the Year 2025.

A discussion took place regarding the nomination of Commissioner De Santos for the 2025 Chair position of the Traffic Commission and Commissioner De Santos accepted the nomination.

Moved by Cugini

Seconded by Phayakapong

A motion was made by Chairman Cugini, second by Commissioner Phayakapong to nominate Commissioner as Chair for the year 2025.

Carried Unanimously

11.b SELECTION OF PRO TEM CHAIR FOR THE 2025

Chairman Cugini opened a discussion regarding nominations for the Chair Pro-Tem of the Traffic Commission for the Year 2025.

A discussion took place regarding the nomination of Commissioner Phayakapong for the 2025 Chair Pro-Tem position of the Traffic Commission and Commissioner Phayakapong accepted the nomination.

Moved by Cugini

Seconded by Johnson

A motion was made by Chairman Cugini, second by Commissioner Johnson to nominate Commissioner Phayakapong as Chair Pro-Tem for the year 2025.

Carried Unanimously

12. COMMISSIONER COMMENTS

Commissioner Phayakapong announced that the "Love Yorba Linda" event is scheduled for April 26 and expressed hope that all will be able to attend.

Commissioner Johnson announced several upcoming community events, including Yorba Days on May 3 and Lobsterfest on May 17, and noted his involvement in planning portions of these events. He also extended his gratitude to Commissioner Rothans who recently

resigned due to health-related reasons, acknowledging his contributions and thanking him for his service.

Chairman Cugini expressed his appreciation to the Commission for the opportunity to serve as Chair during his tenure.

13. ADJOURNMENT

The next scheduled Traffic Commission Meeting is April 24, 2025.

Moved by Johnson

Seconded by Phayakapong

That the Commission adjourns the meeting.

Carried Unanimously

Recording Secretary



STAFF REPORT

CITY of YORBA LINDA

PUBLIC WORKS DEPARTMENT

DATE: APRIL 24, 2025

TO: HONORABLE CHAIRMAN AND MEMBERS OF THE TRAFFIC COMMISSION

FROM: JAMIE LAI, PUBLIC WORKS DIRECTOR / CITY ENGINEER
PREPARED BY: TONY WANG, TRAFFIC ENGINEERING MANAGER

SUBJECT: AVOCADO AVENUE TEMPORARY STREET CLOSURE

RECOMMENDATION

It is recommended that the Traffic Commission approve Southern California Edison's request to conduct a temporary street closure to allow crews to access pole 521729H to replace equipment and install a ground rod on Avocado Avenue between Ben Lomond Lane and Oriente Drive.

BACKGROUND

Staff received a request from Southern California Edison (SCE) to conduct a temporary street closure on Avocado Avenue between Ben Lomond Lane and Oriente Drive. The reason for the request is to allow crews to access pole 521729H to replace equipment and install a ground rod.

Proposed date: June 14, 2025
Job duration: One day, street closures generally between 9:00 a.m. and 5:00 p.m.

DISCUSSION

Avocado Avenue is classified as a collector roadway in the Yorba Linda General Plan with no parking restrictions. It needs to be fully closed to allow crews to access pole 521729H to replace equipment and install a ground rod. The access through traffic will not be available during the street closure. However, provisions for emergency vehicle access will be maintained at all times.

Prior notification and outreach will be coordinated by SCE to all impacted residents.

Conditions of Approval:

Staff support the request subject to the applicant complying with requirements of Traffic Commission Policy No. 36 and the following conditions:

1. Residents shall be notified no less than two weeks prior to the street closure and be re-notified within 72 hours of the closure.
2. The street closures shall conform to all applicable requirements of the State of California Manual on Uniform Traffic Control Devices (MUTCD).
3. Provisions for emergency vehicle access shall be maintained at all times.
4. An alternative parking plan, if needed, for impacted residents shall be provided and approved by the City Engineer.
5. An encroachment permit shall be obtained from the Public Works Department.
6. Applicant shall notify the Orange County Fire Authority and the Orange County Sheriff's Department not less than 72 hours prior to the physical street closure.

FISCAL IMPACT

None.

ATTACHMENT

Attachment 1 - Resident Notification Letter

Attachment 2 - Encroachment Permit Application and Traffic Control Plan



April 16, 2025

Homeowner/Resident
Yorba Linda, CA 92886

SUBJECT: AVOCADO AVENUE TEMPORARY STREET CLOSURE

Dear Homeowner/Resident:

On Thursday, April 24, 2025, the City of Yorba Linda Traffic Commission will consider a request from Southern California Edison (SCE) to conduct a street closure on Avocado Avenue between Ben Lomond Lane and Oriente Drive.

The reason for the request is to allow Southern California Edison (SCE) crew to access pole 521729H to replace equipment and install a ground rod.

Anticipated starting date: June 14, 2025, with a minimum of 72-hour advance notice will be provided.

Job duration: One day. Street closure generally between 9:00 a.m. and 5:00 p.m.

For any inquiries regarding the proposed street closures or traffic control please contact Shirley Sarmiento (SCE) at (949) 701-0528.

The Traffic Commission meeting on April 24, 2025, will begin at 6:30 p.m. in the City Council Chambers located at 4845 Casa Loma Avenue, Yorba Linda, CA. If you have any questions or concerns, you are cordially invited to attend the meeting and share your input. To provide your input in writing, an e-mail can be addressed to Traffic Commission Secretary Sara Garcia-Barrera at sagarcia@yorbalindaca.gov.

Sincerely,

CITY OF YORBA LINDA

Tony L. Wang, PE, TE, PTOE
Traffic Engineering Manager

CC: Jamie Lai, Director of Public Works/City Engineer

PUBLIC RIGHT-OF-WAY ENCROACHMENT PERMIT

4845 CASALOMA AVENUE
YORBALINDA, CA 92886
(714) 961-7170

IMPORTANT NOTICE
SECTION 42164217 OF THE GOVERNMENT CODE REQUIRES A DIGALERT IDENTIFICATION NUMBER BE ISSUED BEFORE A "PERMIT TO EXCAVATE" WILL BE VALID FOR YOUR DIG ID. NUMBER CALL UNDERGROUND SERVICE ALERT AT 811 TWO WORKING DAYS BEFORE YOU DIG.

PERMIT NUMBER: _____

EXPIRATION DATE: _____

APPLICANTS NAME Southern California Edison	APPLICANTS ADDRESS 1851 W. Valencia Dr., Fullerton, CA	ZIP CODE 92833	PHONE NO. (949) 701-0528
CONTRACTORS BUSINESS NAME	CONTRACTORS ADDRESS	ZIP CODE	PHONE NO.
CONTRACTOR LICENSE NUMBER	CONTRACTORS CONTACT NAME	CONTRACTORS CONTACT PHONE NO.	
CITY LICENSE NO.	APPLICANT'S EMAIL ADDRESS shirley.sarmiento@sce.com		
LOCATION OF WORK Avocado Ave E/S, 112' S/O Oriente Dr			
DESCRIPTION OF WORK Crew to access pole 2140287E to replace equipment and install ground rod. Amending permit EP25-010 to close Avocado Ave per Approved TCP			
SCE Ref No. TD2262415			
EST. START DATE 6/14/2025	NUMBER OF DAYS TO COMPLETE THE WORK 2		

CONDITIONS OF PERMIT

- PERMITTEE SHALL INDEMNIFY, DEFEND, AND HOLD THE CITY, ITS OFFICIALS, OFFICERS, REPRESENTATIVES, EMPLOYEES, AUTHORIZED AGENTS AND VOLUNTEERS, FREE AND HARMLESS FROM ANY AND ALL CLAIMS, DEMANDS, CAUSES OF ACTION, COSTS, EXPENSES, LIABILITIES, LOSSES DAMAGES OR INJURIES, IN LAW OR EQUITY, TO PROPERTY OR PERSONS, INCLUDING WRONGFUL DEATH, IN ANY MANNER ARISING OUT OF OR INCIDENT TO ANY ALLEGED ACTS, OMISSIONS OR WILLFUL MISCONDUCT ARISING OUT OF OR IN CONNECTION WITH ANY WORK ON THE PROPERTY UNDERTAKEN PURSUANT TO THIS PERMIT, INCLUDING WITHOUT LIMITATION THE PAYMENT OF ALL CONSEQUENTIAL DAMAGES, ATTORNEY'S FEES AND OTHER RELATED COSTS AND EXPENSES.
- THE CITY SHALL RESERVE THE RIGHT TO ADD OR DELETE ANY CONDITION OR REQUIREMENT OF THIS PERMIT SUBSEQUENT TO ITS ISSUANCE WHICH IT MAY DEEM NECESSARY TO MEET CONSTRUCTION STANDARDS, PREVENT INTERFERENCE WITH TRAFFIC, OR ASSURE SAFETY OR PERSONS USING THE RIGHT-OF-WAY.
- THE CITY ENGINEER MAY CANCEL THE PERMIT IF THE WORK AUTHORIZED THEREIN IS NOT COMMENCED WITHIN THIRTY (30) DAYS OF THE ISSUANCE OF THE PERMIT AND THEREAFTER, IF IN THE OPINION OF THE CITY ENGINEER, IS NOT DILIGENTLY PROSECUTED TO COMPLETION.
- TRAFFIC CONTROL DEVICES SHALL BE IN PLACE PRIOR TO START OF WORK. THE "WORK AREA TRAFFIC CONTROL HANDBOOK" (WATCH MANUAL) OR THE "STATE OF CALIFORNIA, DEPARTMENT OF TRANSPORTATION MANUAL OF UNIFORM TRAFFIC CONTROL DEVICES" PART 6, "TEMPORARY TRAFFIC CONTROL" CURRENT EDITION SHALL BE USED AS A GUIDE FOR SUCH TRAFFIC CONTROL, SUBJECT TO REQUIREMENTS OF THE ISSUING OFFICE.
- IF ANY PART OF THIS INSTALLATION INTERFERES WITH THE FUTURE USE, CONSTRUCTION, OR REPAIR OR CITY FACILITIES OR PUBLIC UTILITY, THE INSTALLATION SHALL BE REMOVED OR RELOCATED, AS DESIGNATED BY THE CITY OF YORBALINDA, AT THE EXPENSE OF THE PERMITTEE OR THE PERMITTEE'S SUCCESSOR IN INTEREST.
- ANY DAMAGE TO CITY PROPERTY OCCURRING DURING THE PERFORMANCE OF THE UNDER THIS PERMIT SHALL BE REPAIRED TO THE SATISFACTION OF THE CITY ENGINEER. ANY CONSTRUCTION OR REPAIR MADE OR RESULTING FROM THIS PERMIT, WHICH HAS FAILED IN THE OPINION OF THE CITY ENGINEER, SHALL BE REPAIRED OR REPLACED AT THE EXPENSE OF THE PERMITTEE.
- ANY REFUND OF DEPOSITS SHALL BE RETURNED TO THE PAYER OF THE DEPOSIT. ANY AND ALL REFUNDS SHALL BE ISSUED ONLY AFTER ALL REQUIRED INSPECTIONS HAVE BEEN PERFORMED AND THE PROJECT FOR WHICH THIS PERMIT IS ISSUED HAS BEEN FINALLY APPROVED.
- IF DEPOSIT IS INSUFFICIENT TO PAY ALL FEES AND COSTS NECESSARY, THE PERMITTEE SHALL, UPON DEMAND, PAY TO THE CITY OF YORBALINDA AN AMOUNT EQUAL TO THE DEFICIENCY. IF PERMITTEE FAILS TO PAY ANY DEFICIENCY AS PROVIDED, THE CITY MAY RECOVER THE SAME BY AN ACTION IN ANY COURT OF COMPETENT JURISDICTION. PERMITTEE SHALL BEAR ANY AND ALL COSTS, INCLUDING ATTORNEY'S FEES, RELATING TO ANY ACTION TAKEN BY THE CITY TO RECOVER SUCH AMOUNTS.
- PERMITTEE SHALL REQUIRE ANY CONTRACTOR OR SUBCONTRACTOR WHO PERFORMS WORK IN OR NEAR THE PUBLIC RIGHT-OF-WAY TO HAVE OR PROCURE AND MAINTAIN BOTH COMMERCIAL AND AUTOMOBILE LIABILITY INSURANCE WITHOUT LIMITING THE INDEMNITY PROVISIONS OF THIS PERMIT. IF THE PROPERTY OWNER CHOOSES TO PERFORM ANY WORK IN OR NEAR THE PUBLIC RIGHT-OF-WAY ITSELF OR WITH HELP OF OTHERS WHO ARE NOT CONTRACTORS, PROPERTY OWNER SHALL ENSURE THAT IT HAS AND MAINTAINS ADEQUATE INSURANCE TO PROTECT AGAINST INJURIES TO PERSONS OR PROPERTY. THE EXACT FORM AND LIMITS OF THE INSURANCE SHALL BE SUBJECT TO THE APPROVAL OF THE CITY.
- ALL CONSTRUCTION ACTIVITIES SHALL COMPLY WITH APPLICABLE LAWS, INCLUDING ALL APPLICABLE CITY ORDINANCES AND THE NPDES PERMIT.

I UNDERSTAND AND AGREE TO THE CONDITIONS AND REQUIREMENTS OF THIS APPLICATION FOR PERMIT

3/25/2025

SIGNATURE OF APPLICANT

DATE

CERTIFICATE OF EXEMPTION FROM WORKER'S COMPENSATION INSURANCE

I HEREBY AFFIRM THAT IN THE PERFORMANCE OF THE WORK FOR WHICH THIS PERMIT IS ISSUED, I SHALL NOT EMPLOY ANY PERSON IN ANY MANNER SO AS TO BECOME SUBJECT TO THE WORKER'S COMPENSATION LAWS OF CALIFORNIA. NOTICE TO CONTRACTOR: IF, AFTER THIS CERTIFICATE OF EXEMPTION, YOU SHOULD BECOME SUBJECT TO THE WORKERS COMPENSATION PROVISIONS OF THE LABOR CODE, YOU MUST FORTHWITH COMPLY WITH SUCH PROVISIONS OR THIS PERMIT SHALL BE DEEMED REVOKED. I CERTIFY THAT APPLICATION AND STATE THAT THE ABOVE INFORMATION IS CORRECT. I AGREE TO COMPLY WITH ALL CITY ORDINANCES AND STATE LAWS RELATING TO BUILDING CONSTRUCTION, AND HEREBY AUTHORIZE REPRESENTATIVES OF THIS CITY TO ENTER UPON THE ABOVE MENTIONED PROPERTY FOR INSPECTION PURPOSES.

SIGNATURE OF CONTRACTOR

SIGNATURE OF CONTRACTOR

DATE

CITY STAFF USE ONLY

<input type="checkbox"/> TRAFFIC CONTROL PER THE LATEST "WATCH MANUAL" FIELD MODIFICATIONS MAY BE NECESSARY TO ENSURE TRAFFIC SAFETY AS DIRECTED BY THE CITY ENGINEER OR CITY REPRESENTATIVE.	PERMIT FEE	AMOUNT
<input type="checkbox"/> WORK HOURS FOR LANE CLOSURES ARE 9AM TO 3PM. OTHERWISE WORK HOURS ARE 7:30AM TO 4:30PM MONDAY THRU FRIDAY EXCEPT FEDERAL HOLIDAYS. NO WORK REQUIRING INSPECTION IS PERMITTED IN THE CITY RIGHT-OF-WAY ON FRIDAYS WHEN THE CITY IS CLOSED. HOWEVER, FRIDAY WORK REQUIRING INSPECTION MAY BE PERMITTED WITH ADVANCE NOTICE OF AT LEAST 48 HRS. AND PAYMENT OF A MINIMUM INSPECTION FEE.	INSPECTION FEE	_____
<input type="checkbox"/> ALL WORK SHALL CONFORM TO STANDARD SPECIFICATIONS FOR PUBLIC WORKS CONSTRUCTION, THE ORANGE COUNTY PUBLIC FACILITIES & RESOURCES DEPT. (P.F. & R.D.) STANDARD PLANS, AND THE STANDARD SPECIFICATIONS OF THE CITY OF YORBALINDA LATEST EDITIONS.	ISSUANCE	_____
<input type="checkbox"/> ASPHALT CONCRETE SHALL BE SAWCUT PRIOR TO REPLACEMENT. MINIMUM PAVEMENT SECTION SHALL MATCH EXISTING SECTION PLUS 1-INCH OF ASPHALT. COMPACTION TEST REQUIRED BACKFILL MAY BE 1-1/2 SACK SAND SLURRY UNLESS OTHERWISE DIRECTED BY THE CITY ENGINEER. PLATES AND TEMPORARY AC TO BE ON SITE PRIOR TO START OF WORK.	DEPOSIT	
<input type="checkbox"/> A "T" CAP WILL BE UTILIZED ON ALL STREET CUTS. "T" SHALL EXTEND A MINIMUM OF ONE (1) FOOT BEYOND EACH SIDE OF THE TRENCH. THE GRIND WIDTH WILL BE DETERMINED BY THE LOCATION OF THE TRENCH WITHIN A LANE, THE VEHICULAR PATH OF TRAVEL AND THE TRENCH WIDTH. THE PAVEMENT SHALL BE COLD PLANED 2 INCHES AND RESURFACED WITH 2 INCHES OF ASPHALT CONCRETE OR REPLACED IN KIND.	MISC. DEPOSIT 129	_____
<input type="checkbox"/> PORTLAND CEMENT CONCRETE SHALL BE SAWDUST AND REMOVED TO EXISTING CONTROL JOINTS.	SPECIAL INSPECTION 140	_____
<input type="checkbox"/> A 90% COMPACTION, VERIFIED BY TESTS, IS REQUIRED IN DIRT EXCAVATION AREA.		
<input type="checkbox"/> REPLACE EXISTING STRIPING AS DIRECTED BY THE CITY INSPECTOR. ALL DAMAGED TRAFFIC LOOPS SHALL BE REPLACED WITHIN 3-5 DAYS.		
<input type="checkbox"/> CALL 48 HOURS PRIOR TO EACH DAY OF WORK UNDER THIS PERMIT FOR INSPECTION.		
<input type="checkbox"/> CALL FOR INSPECTION WHEN WORK IS COMPLETE FOR REFUND OF DEPOSIT.		
<input type="checkbox"/> SEE ATTACHED CONDITIONS.	TOTAL	\$ 0.00

ISSUED BY: _____

CITY STAFF SIGNATURE

PAYMENT VALIDATION

GENERAL TRAFFIC CONTROL NOTES

1. ALL TRAFFIC CONTROL WORK FOR CONSTRUCTION TRAFFIC CONTROL PLAN(S) SPECIFIC TO THE WORK AREA PREPARED WITH AND CONFORM TO THE LATEST EDITION OF THE CALIFORNIA MANUAL ON UNIFORM TRAFFIC CONTROL DEVICES (CA-MUTCD) 2014 REV 7 (EFFECTIVE MARCH 10th, 2023). THE STATE OF CALIFORNIA DEPARTMENT OF TRANSPORTATION (CALTRANS) STANDARD SPECIFICATIONS & STANDARD PLANS, WORK AREA TRAFFIC CONTROL HANDBOOK (WATCH), THE SAN DIEGO STANDARD REGIONAL & ALL OCCUPATIONAL SAFETY & HEALTH ADMINISTRATION(OSHA) REQUIREMENTS AS APPLICABLE.

2. THE CONTRACTOR SHALL COMPLY WITH THE REQUIREMENTS OF THE AMERICAN DISABILITY ACT (ADA) ACCESSIBILITY GUIDELINES & WITH THE CALIFORNIA ACCESSIBILITY GUIDELINES AS RELATED TO PEDESTRIAN ACCESS & SHALL MAINTAIN PEDESTRIAN ACCESS AT ALL TIMES PER ADA REQUIREMENTS. SIDEWALK CLOSURE WITH THE CA MUTCD.

3. THE AGENCY RESERVES THE RIGHT TO OBSERVE THESE TRAFFIC CONTROL PLAN IN USE & TO MAKE ANY NECESSARY CHANGES AS FIELD CONDITIONS WARRANT. ANY CHANGES SHALL SUPERSEDE THESE PLANS & BE DONE PER THE CA MUTCD WITH THE APPROVAL OF THE CITY ENGINEER. REVISED TRAFFIC CONTROL PLANS MAY BE REQUIRED BY THE AGENCY. EXACT LOCATIONS OF ALL EQUIPMENT & TRAFFIC CONTROL DEVICES SHALL BE DETERMINED BY THE AGENCY.

4. WORKING HOURS PER THE ENCROACHMENT PERMIT STANDARD CONDITIONS AS ISSUED BY THE AGENCY OR AS SPECIFIED IN PROJECT BID SPECIFICATIONS.

5. THE CONTRACTOR SHALL NOTIFY THE AGENCY AT LEAST 7 WORKING DAYS IN ADVANCE OF IMPLEMENTING ANY CONSTRUCTION DETOURS. THE CONTRACTOR SHALL NOTIFY ALL AFFECTED RESIDENTS & BUSINESSES 7 WORKING DAYS PRIOR TO CONSTRUCTION. TEMPORARY R26(CA) "NO PARKING" SIGNS SHALL BE POSTED 72 HOURS PRIOR TO COMMENCING ANY WORK.

6. ALL PRIVATE DRIVEWAYS & SIDE STREETS SHALL BE KEPT OPEN AT ALL TIMES EXCEPT WHEN CONSTRUCTION TAKES PLACE DIRECTLY IN FRONT OF THE DRIVEWAYS/SIDE STREETS. ALL OPEN EXCAVATIONS ON PUBLIC STREETS DURING THE NON-WORKING HOURS SHALL BE BACK FILLED OR STEEL PLATED (ANTI-SKID PLATES) FOR TRAFFIC TO THE SATISFACTION OF THE AGENCY OR ENGINEER.

7. THROUGHOUT CONSTRUCTION ALL EXISTING TRAFFIC CONTROL CONFLICTING SIGNAGE SHOULD BE COVERED OR REMOVED WHILE TEMPORARY TRAFFIC CONTROL IS IN PLACE. ANY CONFLICTING STRIPPING SHOULD BE GIVEN ALTERNATE GUIDANCE VIA TEMPORARY TRAFFIC CONTROL DELINEAGE.

8. ALL TEMPORARY TRAFFIC CONTROL DEVICES SHALL BE REMOVED FROM THE STREET WHEN NOT IN USE OR UPON COMPLETION OF DAILY CONSTRUCTION & THE PERMANENT TRAFFIC CONTROL DEVICES SHALL BE RESTORED BY THE CONTRACTOR AT THE END OF EACH WORK DAY.

9. TRAFFIC SIGNALS SHALL REMAIN IN OPERATION AT ALL TIMES. CONFLICTING TRAFFIC SIGNAL INDICATIONS SHALL BE COVERED & SIGNAL OPERATION DURING EACH CONSTRUCTION PHASE SHALL BE COORDINATED WITH AND APPROVED BY THE AGENCY'S ENGINEER. FOR SIGNALIZED INTERSECTIONS, THE CONTRACTOR HAS 8 HOURS UPON CUTTING THE EXISTING LOOPS TO INSTALL AN OPERATIONAL SYSTEM OF EITHER VIDEO DETECTION OR DETECTION LOOPS.

10. IN ACCORDANCE WITH GENERALLY ACCEPTED CONSTRUCTION PRACTICES, THE CONTRACTOR SHALL BE SOLELY & COMPLETELY RESPONSIBLE FOR THE CONDITIONS OF THE JOB SITE, INCLUDING THE SAFETY OF ALL PERSONS & PROPERTY DURING PERFORMANCE OF WORK. THE CONTRACTOR SHALL FULLY COMPLY WITH ALL STATE & FEDERAL LAWS, RULES, REGULATIONS & ORDERS RELATING TO SAFETY TO THE PUBLIC AND WORKMEN.

11. IT IS THE RESPONSIBILITY OF THE CONTRACTOR PERFORMING THE WORK ON A PUBLIC STREET TO INSTALL & MAINTAIN TRAFFIC CONTROL DEVICES AS SHOWN HEREON, AS WELL AS ANY SUCH ADDITIONAL DEVICES AS MAY BE REQUIRED TO ENSURE THE SAFE MOVEMENT OF TRAFFIC & PEDESTRIANS THROUGH OR AROUND THE WORK AREA.

12. ALL TRAFFIC LANES SHALL HAVE A MINIMUM OF 5 FEET CLEARANCE FROM OPEN EXCAVATIONS & A MINIMUM OF 2' FEET FROM VERTICAL OBSTRUCTIONS. WHENEVER POSSIBLE, THE CONTRACTOR SHALL MAINTAIN A MINIMUM ONE LANE OF TRAFFIC IN EACH DIRECTION AT ALL TIMES.

13. THE CONTRACTOR SHALL POST C41(CA), "UNEVEN LANES" or W8-1 "BUMP" SIGNS IN ADVANCE OF PAVEMENT SURFACE DISRUPTIONS OF 1/2" OR GREATER. PAVEMENT DISRUPTIONS OF 1 1/2" OR GREATER SHALL HAVE A BEVELED EDGE OF 4 HORIZONTAL TO 1 VERTICAL.

14. PLACE ADDITIONAL C30(CA) "LANE CLOSED" SIGN ON TYPE 1 BARRICADES AT 200' INTERVALS THROUGHOUT EXTENDED WORK AREAS IN EACH LANE THAT IS CLOSED. INSTALL C27(CA) "OPEN TRENCH" SIGNS WHENEVER AN OPEN EXCAVATION AREA EXISTS ADJACENT TO THE TRAVELED WAY. "STEEL PLATES AHEAD" SIGNS SHALL BE POSTED IN ADVANCE OF EXCAVATIONS COVERED BY STEEL PLATE BRIDGING.

15. NIGHT WORK MAY REQUIRE WRITTEN APPROVAL FROM THE AGENCY. AT AGENCIES DISCRETION, LANE CLOSURES, ROAD DETOURS, ROAD CLOSURES & TRAFFIC SIGNAL MODIFICATION ASSOCIATED WITH OVERNIGHT CONSTRUCTION ACTIVITIES MAY REQUIRE INFORMATION SIGNS BE PLACED IN ADVANCE OF CONSTRUCTION.

16. ALL ADVANCED WARNING SIGNS SHALL BE RETRO-REFLECTIVE DURING DAY TIME HOURS & WITH WARNING LIGHTS AT NIGHT. THE CONTRACTOR SHALL PROVIDE FLAG PERSONS AS DEEMED NECESSARY BY THE AGENCY.

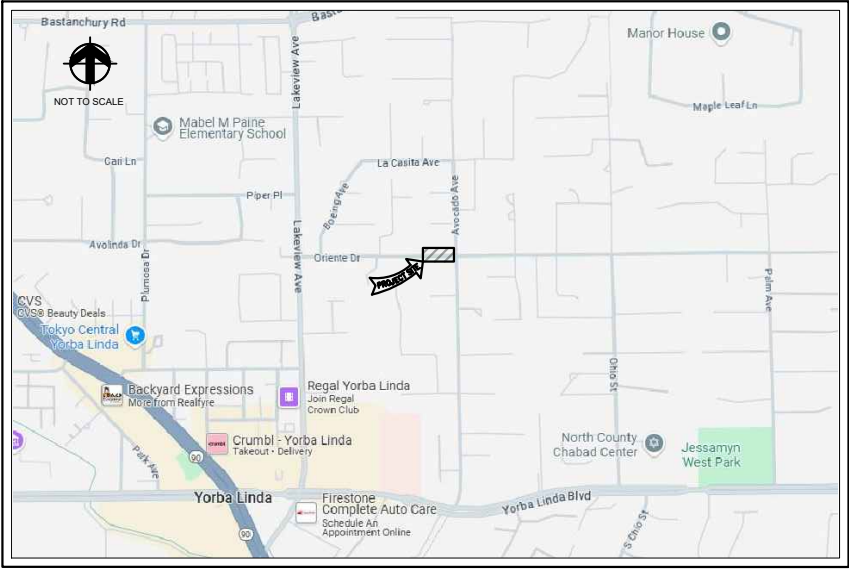
17. LEFT TURNS SHALL BE PROHIBITED DURING CONSTRUCTION WHEN LEFT TURN VISIBILITY IS RESTRICTED AND WHEN LEFT TURNS ARE IN CONFLICT WITH CONSTRUCTION OR OPPOSING TRAFFIC.

18. ALL SIGNS SHALL CONFORM TO THE CURRENT CA MUTCD & THE UNITED STATES DEPARTMENT OF TRANSPORTATION BOOK OF STANDARD HIGHWAY SIGNS. UNLESS SHOWN OTHERWISE ON THE PLANS, NO SIGNS SHALL OVERLAP. ALL TUBULAR DELINEATORS SHALL BE 36" MIN HEIGHT & CONES SHALL BE 28" MIN. HEIGHT & SHALL INCLUDE A 6" & 4" HIGH INTENSITY REFLECTIVE SLEEVES.

19. IF UTILIZING REDUCE SPEED LIMIT TO 25MPH SIGNS IN A CONSTRUCTION ZONE, FOLLOW MUTCD REQUIREMENTS. AS WELL AS POSTING 25MPH CONSTRUCTION ZONE SPEED LIMITS WHERE THE STREETS WILL BE REDUCED TO ONE LANE IN EITHER DIRECTION. CONFLICTING SIGNS SHALL BE COVERED & UNCOVERED AS NEEDED

20. IF DELINEATORS ARE UTILIZED, THEY SHALL BE SPACED AT 20' O.C. WITHIN 300' OF AN INTERSECTION.

VICINITY – MAP



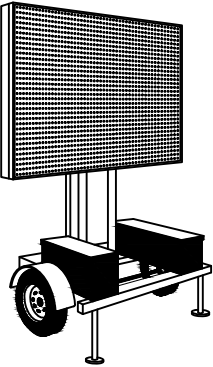
MISCELLANEOUS TEMP. TRAFFIC CONTROL SIGNS

W20-1	W20-2	W20-3	C20(CA)R	C20(CA)2R	C20(CA)L	C20(CA)2L	C20(CA)(BK)(MOD)	W21-5(MOD)
W12-1	W1-4(L)	W1-4(R)	W4-2(R)	W4-2(L)	C27(CA)	C30(CA)	W1-6(L)	SC3(CA)
W20-4	C9A(CA)	W3-4	C12(CA)	(CONE MOUNT) W6-4	C30(CA)(BK)(MOD)	M4-10(L)	M4-10(R)	M4-8a

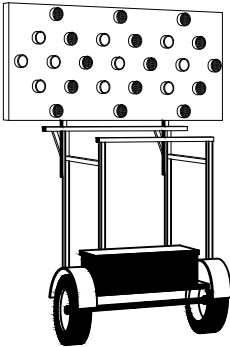
MISCELLANEOUS REGULATORY SIGNS

R11-2	R11-4	R9-9	R9-11(R)	R9-11(L)	R9-11a(R)	R9-11a(L)	R4-7a	R4-8a
R3-7(R)	R3-7(L)	R3-5(R)	R3-5(L)	R9-3b(R)	R9-3b(L)	R3-2	R3-1	R3-4
R9-3	R9-3a	R5-1	R5-1a	R1-1	R60B(CA)	R3-6(R)	R3-6(L)	R3-18

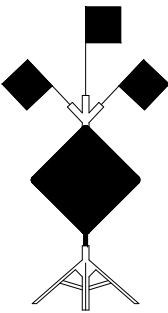
MISCELLANEOUS DEVICES



CHANGEABLE MESSAGE SIGN TRAILER (TYP.) (CMS)



FLASHING ARROW SIGN TRAILER (TYP.) (FAS)



HIGH LEVEL WARNING DEVICE (HLWD)



TRAFFIC CONE



POST TUBE



TYPE II BARRICADE

LEGEND:

- PROPOSED WORK AREA
- EXISTING STRIPING
- EXISTING CURB & GUTTER
- MUNICIPALITY BOUNDARY LINES
- EXISTING DRIVEWAY(S)
- CALTRANS BOUNDARY LINES
- PROPOSED CHANNELIZATION LINE
- EXISTING FENCE LINE
- TRAFFIC CONE / TRAFFIC TUBE-DELINEATOR
- PROPOSED FLAG PERSON W/ 2-WAY RADIO
- PROPOSED PORTABLE ARROW BOARD
- PROPOSED PORTABLE MESSAGE SIGN
- HIGH LEVEL WARNING DEVICE W/ SIGN OR CONE MOUNTED SIGN
- PROPOSED TYPE II BARRICADE W/ SIGN(S)
- PROPOSED TYPE III BARRICADE W/ SIGN(S)
- FLASHING BEACON
- SIGNALIZED INTERSECTION

PERMIT NO. _____

 PRO TRAFFIC SERVICES LIC. # 978979 WBE CERTIFEID DATE: 3.25.2025 DESIGNED BY: ERIK ERNST	REV. 1			ENG.	SEAL	ENGINEER'S INFORMATION	CLIENT: SOUTHERN CALIFORNIA EDISON COMPANY	PROJECT: GRID MODERNIZATION			TD/SAP NO. 2262415	CONTACT SHIRLEY SARMIENTO	CITY OF YORBA LINDA PUBLIC WORKS - TRAFFIC ENGINEERING DIVISION TEMPORARY TRAFFIC CONTROL PLANS FOR CITY USE ONLY: FILE NO. _____ W.O. NO. _____	C SHEET
							ADDRESS: AVOCADO AVE AND ORIENTE DR	TCP NO. TCPORPRO3250576	CONST. PERMIT ORG. T&D DIST. BUS. LINE M: 949.701.0528					
							ENG. NAME: WILLIAM RAYMOND	RCE #: 57580	DATE: XX.XX.XXXX					
	REV. #	REVISION	DATE											

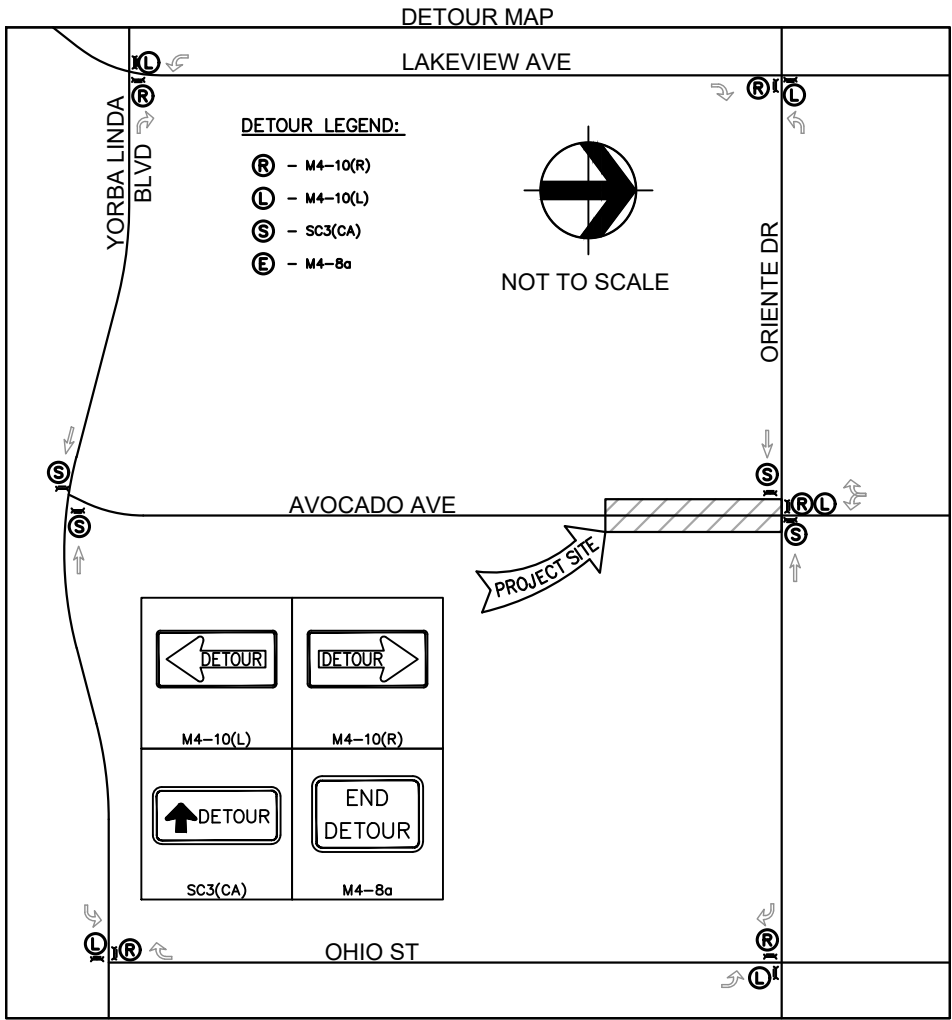
SPEED
LIMIT
25

SPEED
LIMIT
30

SPEED
LIMIT
40

ADDITIONAL NOTES:

- ① CONTRACTOR TO COORDINATE W/ PROP OWNER IF THERE'S A POTENTIAL NEED FOR ANY DRIVE WAY CLOSURES.
- ② CONTRACTOR SHALL ASSIST W/LOCAL/ PEDESTRIAN TRAFFIC AROUND OR THRU WORK AREA.



 W20-1	 W20-3	 W20-2	 R3-1
 R3-2	 R11-4	 R11-2	 R5-1
 R9-11(L)	 R9-11a(R)	 R9-9	 G20-2

SPECIAL SIGN

ROAD CLOSED

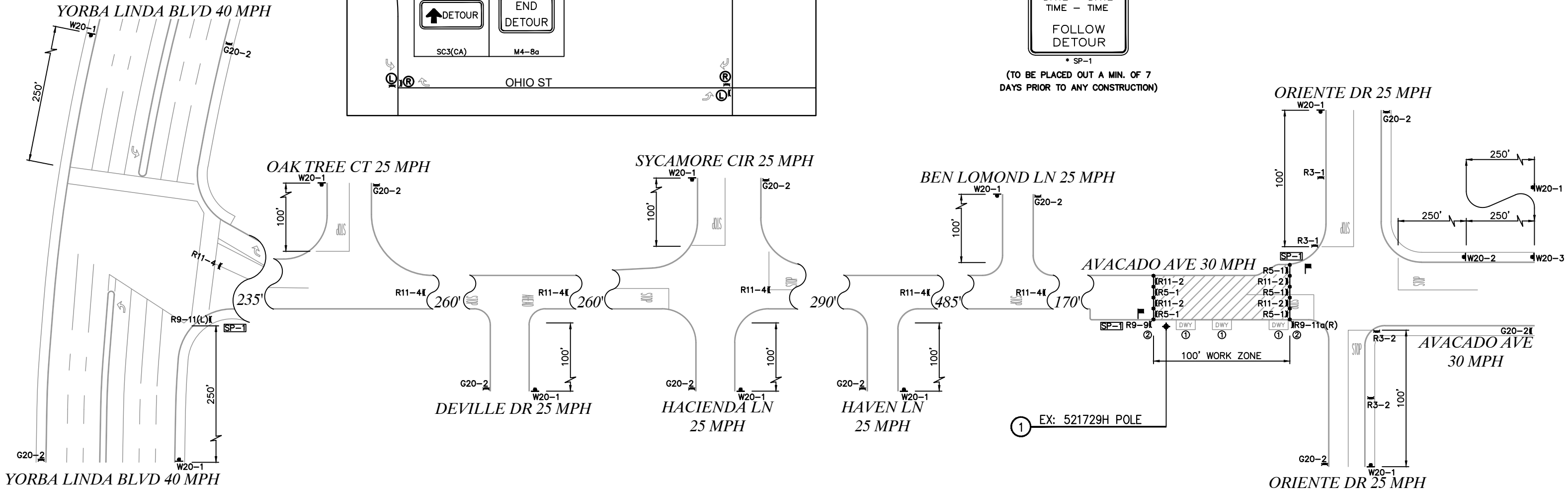
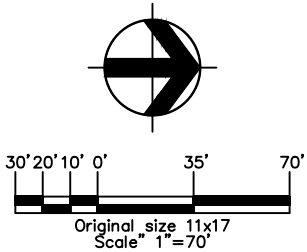
DATE - DATE
TIME - TIME

FOLLOW DETOUR

* SP-1

(TO BE PLACED OUT A MIN. OF 7 DAYS PRIOR TO ANY CONSTRUCTION)

FLAG PERSON TO ASSIST WITH LOCAL RESIDENTS, DETOURS AND TO ENSURE OF NO WRONG WAY TRAFFIC



PRO TRAFFIC SERVICES
LIC. # 978979
WBE CERTIFEID
DATE: 3.25.2025
DESIGNED BY: ERIK ERNST

REV. 1		
REV. #	REVISION	DATE

ENG. SEAL

ENGINEER'S INFORMATION

ENG. NAME: WILLIAM RAYMOND
RCE #: 57580
DATE: XX.XX.XXXX

CLIENT: SOUTHERN CALIFORNIA EDISON COMPANY

PROJECT: GRID MODERNIZATION

TD/SAP NO. 2262415

TCP NO. TCPORPRO3250576

CONTACT: SHIRLEY SARMIENTO
CONST. PERMIT ORG. T&D DIST. BUS. LINE
M: 949.701.0528

CITY OF YORBA LINDA

PUBLIC WORKS - TRAFFIC ENGINEERING DIVISION

TEMPORARY TRAFFIC CONTROL PLANS

FOR CITY USE ONLY: FILE NO.

W.O. NO.

SHEET 1





STAFF REPORT

CITY of YORBA LINDA

PUBLIC WORKS DEPARTMENT

DATE: APRIL 24, 2025

TO: HONORABLE CHAIRMAN AND MEMBERS OF THE TRAFFIC COMMISSION

FROM: JAMIE LAI, PUBLIC WORKS DIRECTOR / CITY ENGINEER
PREPARED BY: TONY WANG, TRAFFIC ENGINEERING MANAGER

SUBJECT: BASTANCHURY ROAD TEMPORARY STREET CLOSURES – OC LOOP SEGMENT D PROJECT

RECOMMENDATION

It is recommended that the Traffic Commission approve the temporary street closures on Bastanchury Road at Carbon Canyon Channel.

BACKGROUND

The OC Loop is a planned alternative transportation corridor comprised of 66 miles of regional non-motorized recreational/commuter cycling and pedestrian routes that provide seamless connections and an opportunity for people to bike, walk and connect to some of California's most scenic beaches and inland destinations. Approximately 88% (58 miles) of the OC Loop is complete and is actively used by thousands of people each year. Existing segments include the Santa Ana River Bikeway, the Coastal Bikeway, and portions of the Coyote Creek Bikeway and San Gabriel River Bikeway, providing a well-connected network for cyclists and pedestrians alike.

One of the portions of the OC Loop, segment D, is currently under construction. This 0.67-mile segment is located in the cities of Yorba Linda, Placentia, and Brea. The portion within Yorba Linda city limits is 0.12 miles. The proposed bikeway alignment, most of which will be adjacent to the Carbon Canyon Channel, is generally undeveloped. Surrounding land use is flood control, street right-of-way, open space, and single family residential. The alignment connects the northern terminus of the El Cajon Trail near Bastanchury Road to the southern terminus of the La Floresta Trail located near the intersection of Imperial Highway and La Floresta Drive.

The proposed project's key feature is a Class I bikeway, ranging from 12 to 14 feet in width. To accommodate its construction, the project includes a box culvert, multiple retaining walls, and slope grading. The box culvert will be built through the existing embankment that supports Bastanchury Road's crossing over the Carbon Canyon Channel. Measuring approximately 141 feet long, 12 feet wide, and 12.5 feet tall, the culvert will consist of precast segments placed in open-cut excavations.

To facilitate this construction, street closures on Bastanchury Road at the Carbon Canyon Channel are necessary. The project will be executed in three phases, with Phase 1 necessitating a full street closure:

- Phase 1 (Construct Middle): Full closure for 9 working days (June 17 – June 26)
- Phase 2 (Construct North Side): Partial closure if needed for 5 working days (June 27 – July 3)
- Phase 3 (Construct South Side): Partial closure if needed for 5 working days (July 7 – July 11)

The selected contractor has been incentivized to minimize disruptions to Bastanchury Road and aims to complete the full box culvert construction within the initial 9-day full closure. If successful, Phases 2 and 3 may not require partial closures. However, these additional closures are included in the request to account for any unforeseen challenges.

At the March 27 Traffic Commission meeting, the Project Team proposed using Golden Avenue as the primary detour route but was directed to revise the plans to reflect Imperial Highway as a primary detour route instead of Golden Avenue.

DISCUSSION

Staff are in support of this regional OC Loop project. However, the contractor must comply with the following conditions:

1. Applicant shall obtain an encroachment permit from the City.
2. Applicant must submit a certificate of liability insurance in an amount not less than one million dollars (\$1,000,000) per occurrence with a two million-dollar (\$2,000,000) aggregate. The certificate must name the City of Yorba Linda, its agents, officials, and employees as an additional insured.
3. Applicant must also agree to hold harmless the City of Yorba Linda and any of its agents, officials or employees against all liabilities, judgments, costs, and expenses which might arise as a result of the issuance of the street closure permit.
4. A Traffic Control Plan (TCP) signed by a licensed Civil Engineer or Traffic Engineer will be required. The street closure shall conform to all applicable requirements of the State of California Manual on Uniform Traffic Control Devices (MUTCD).
5. The portable Changeable Message Signs (PCMS) shall be installed in accordance with the TCP at least two weeks before the start of construction to notify motorists of upcoming street closures.
6. Provisions for emergency vehicle access shall be maintained at all times.
7. Applicant shall notify the Orange County Fire Authority and the Orange County Sheriff's Department not less than 72 hours prior to the physical street closure and no later than two (2) hours after all signs and devices have been removed.

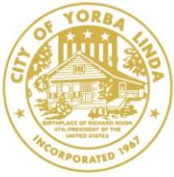
FISCAL IMPACT

None.

ATTACHMENT

Attachment 1 – Resident Notification Letter

Attachment 2 – Detour and Stage Construction Traffic Control Plan



April 18, 2025

Homeowner/Resident
Yorba Linda, CA 92886

SUBJECT: BASTANCHURY ROAD TEMPORARY STREET CLOSURES

Dear Homeowner/Resident:

On Thursday, April 24, 2025, the City of Yorba Linda Traffic Commission will review the County of Orange's proposed street closures on Bastanchury Road at the Carbon Canyon Channel for OC Loop Segment D project.

The OC Loop is a planned alternative transportation corridor comprised of 66 miles of regional non-motorized recreational/commuter cycling and pedestrian routes that provide seamless connections and an opportunity for people to bike, walk and connect to some of California's most scenic beaches and inland destinations. Approximately 88% (58 miles) of the OC Loop is complete and is actively used by thousands of people each year. Existing segments include the Santa Ana River Bikeway, the Coastal Bikeway, and portions of the Coyote Creek Bikeway and San Gabriel River Bikeway, providing a well-connected network for cyclists and pedestrians alike.

One of the portions of the OC Loop, segment D, is currently under construction. This 0.67 mile segment is located in the cities of Yorba Linda, Placentia, and Brea. The portion within Yorba Linda city limits is 0.12 miles. The proposed bikeway alignment, most of which will be adjacent to the Carbon Canyon Channel, is generally undeveloped. Surrounding land use is flood control, street right-of-way, open space, and single family residential. The alignment connects the northern terminus of the El Cajon Trail near Bastanchury Road to the southern terminus of the La Floresta Trail located near the intersection of Imperial Highway and La Floresta Drive.

The proposed project's key feature is a Class I bikeway, ranging from 12 to 14 feet in width. To accommodate its construction, the project includes a box culvert, multiple retaining walls, and slope grading. The box culvert will be built through the existing embankment that supports Bastanchury Road's crossing over the Carbon Canyon Channel. Measuring approximately 141 feet long, 12 feet wide, and 12.5 feet tall, the culvert will consist of precast segments placed in open-cut excavations.

To facilitate this construction, street closures on Bastanchury Road at the Carbon Canyon Channel are necessary. The project will be executed in three phases, with Phase 1 necessitating a full street closure:

- Phase 1 (Construct Middle): Full closure for 9 working days (June 17 – June 26, 2025)

- Phase 2 (Construct North Side): Partial closure if needed for 5 working days (June 27 – July 3, 2025)
- Phase 3 (Construct South Side): Partial closure if needed for 5 working days (July 7– July 11, 2025)

On March 27, the Traffic Commission reviewed the Project Team's proposed detour routes and provided feedback. At the upcoming April 24 meeting, the Project Team will present a revised detour plan, recommending Imperial Highway and Yorba Linda Boulevard as the primary routes for motorists.

The Traffic Commission meeting on April 24, 2025 begins at 6:30 p.m. in the City Council Chambers located at 4845 Casa Loma Avenue, Yorba Linda, CA. You are cordially invited to attend the meeting and provide input. Should you desire to provide input in writing; an e-mail can be addressed to Traffic Commission Secretary Sara Garcia- Barrera at sagarcia@yorbalindaca.gov no later than 3:00 p.m. on the day of the meeting.

If you have any questions, please contact me at 714-961-7170.

Sincerely,

CITY OF YORBA LINDA



Tony L. Wang, PE, TE, PTOE
Traffic Engineering Manager

Cc: Jamie Lai, Director of Public Works/City Engineer

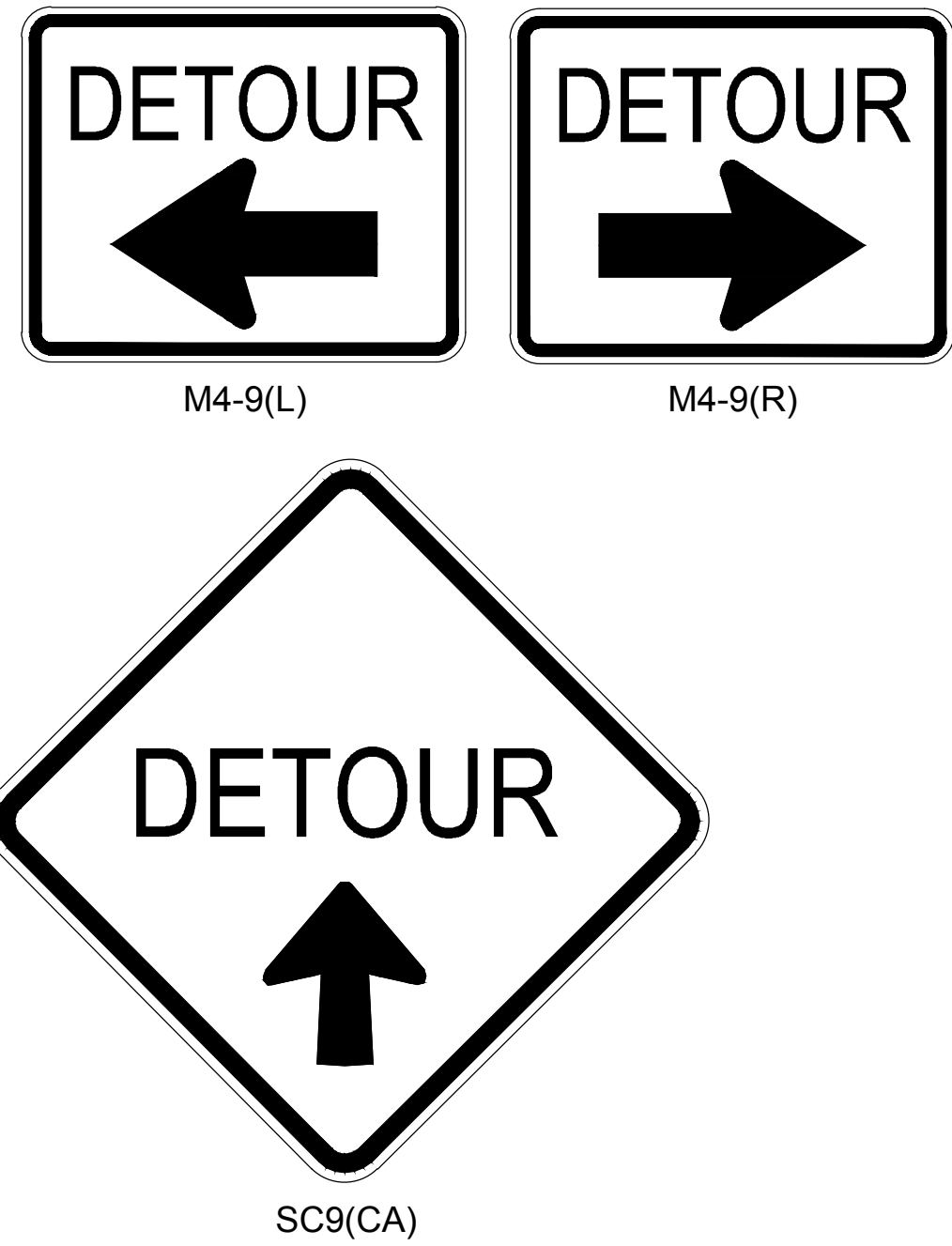
NOTES

- 1. LOCATION OF CONSTRUCTION AREA SIGNS SHOW ARE APPROXIMATE. EXACT LOCATION TO BE DETERMINED BY THE ENGINEER.
- 2. FOR ADDITIONAL CONSTRUCTION AREA SIGNS, SEE CONSTRUCTION STAGING PLANS.
- 3. THE PCMS SHOULD BE INSTALLED AND TURNED ON FOURTEEN (14) DAYS PRIOR TO TRAFFIC HANDLING IMPLEMENTATION. SEE PCMS SIGN DETAIL 4 FOR PRIOR IMPLEMENTATION. UTILIZE PCMS DETAIL 2,3 AND 4 PER PLAN DURING CLOSURE WINDOW.
- 4. ALL CLOSURES ON BASTANCHURY Rd MUST BE APPROVED BY CITY OF YORBA LINDA AND CITY OF PLACENTIA.
- 5. PLACEMENT OF THE PCMS SIGN SHOULD NOT IMPACT PEDESTRIAN ACCESS, DRIVEWAY ACCESS & VEHICLE TRAFFIC. EXACT LOCATION TO BE DETERMINED BY THE ENGINEER.

LEGEND

- TEMPORARY SIGN (ONE POST)
- TEMPORARY SIGN (TWO POST)
- PORTABLE CHANGEABLE MESSAGE SIGN
- TRAFFIC DIRECTION

SIGN DETAILS



PCMS DETAIL 1

B	A	S	T	A	N	C	H		D	E	T	O	U	R	
-	U	R		R	D				A	H	E	A	D		
C	L	O	S	E	D										
1st PHASE								2nd PHASE							

PCMS DETAIL 3

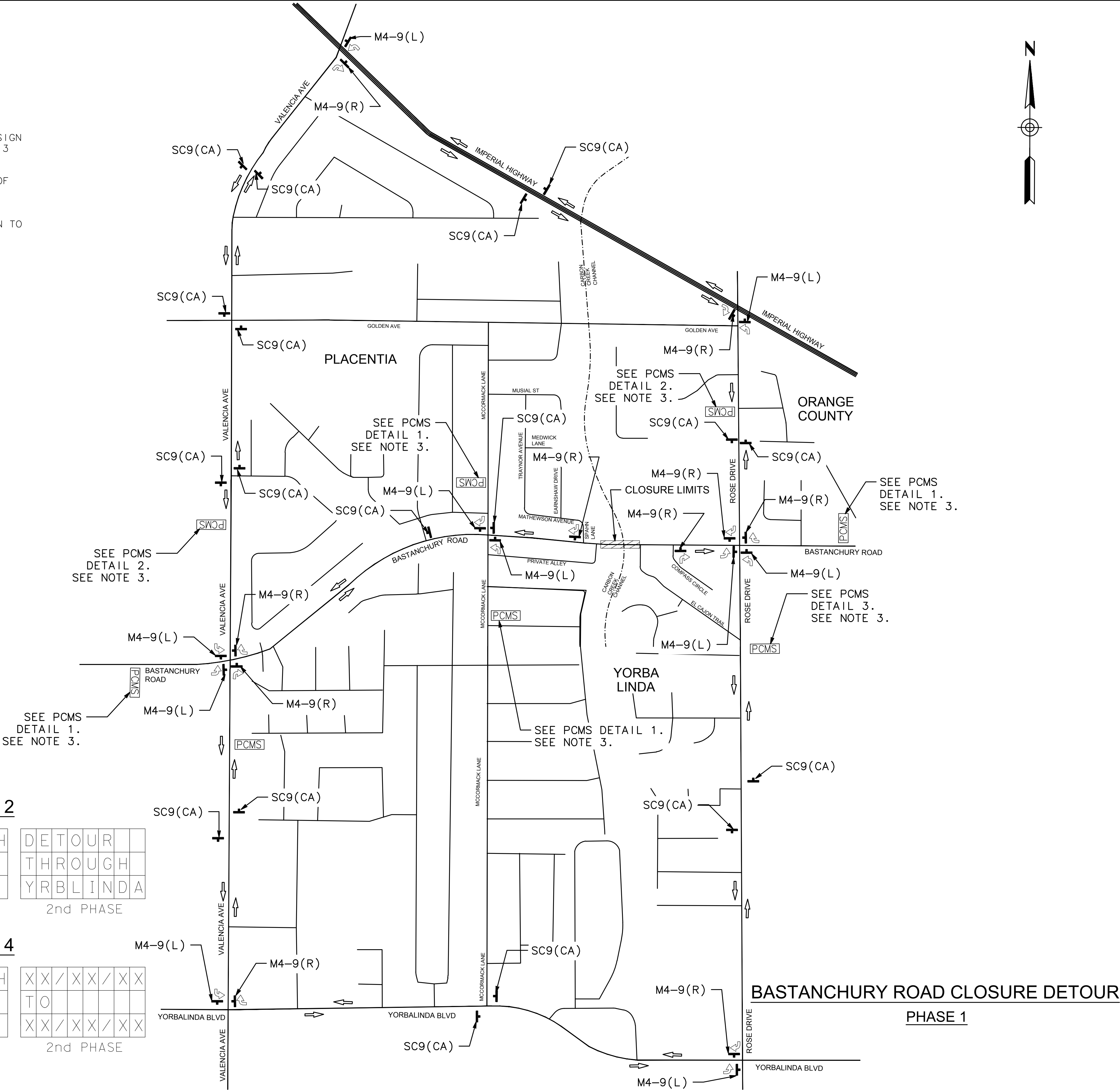
B	A	S	T	A	N	C	H		D	E	T	O	U	R	
-	U	R		R	D				T	H	R	O	U	G	H
C	L	O	S	E	D				I	M	P	E	R	I	A
1st PHASE								2nd PHASE							

PCMS DETAIL 2

B	A	S	T	A	N	C	H		D	E	T	O	U	R	
-	U	R		R	D				T	H	R	O	U	G	H
C	L	O	S	E	D				Y	R	B	L	I	N	D
1st PHASE								2nd PHASE							

PCMS DETAIL 4

B	A	S	T	A	N	C	H		X	X	/	X	X	/	X	X
-	U	R	Y		R	D			T	O						
C	L	O	S	E	D				X	X	/	X	X	/	X	X
1st PHASE								2nd PHASE								



MARK	DESCRIPTION	DATE	APPR.

PREPARED UNDER THE RESPONSIBLE CHARGE OF:

DATE

RAVI SHAH, P.E.

DESIGNED BY:	RD	CHECKED BY:	AE
DRAWN BY:	PE		

County of Orange
PublicWorks

DRAWING NO.: OCLP_SEG04_DE-1_Rev.dwg
FILE NAME: OCLP_SEG04_DE-1_Rev.dwg
PLOT DATE: Wednesday, April 16, 2025
SCALE: AS SHOWN

PREPARED BY:
MARK THOMAS

ORANGE COUNTY
BIKEWAY LOOP
SEGMENT D

STA. 10+00 TO STA. 16+50

DETOUR PLAN

SHEET

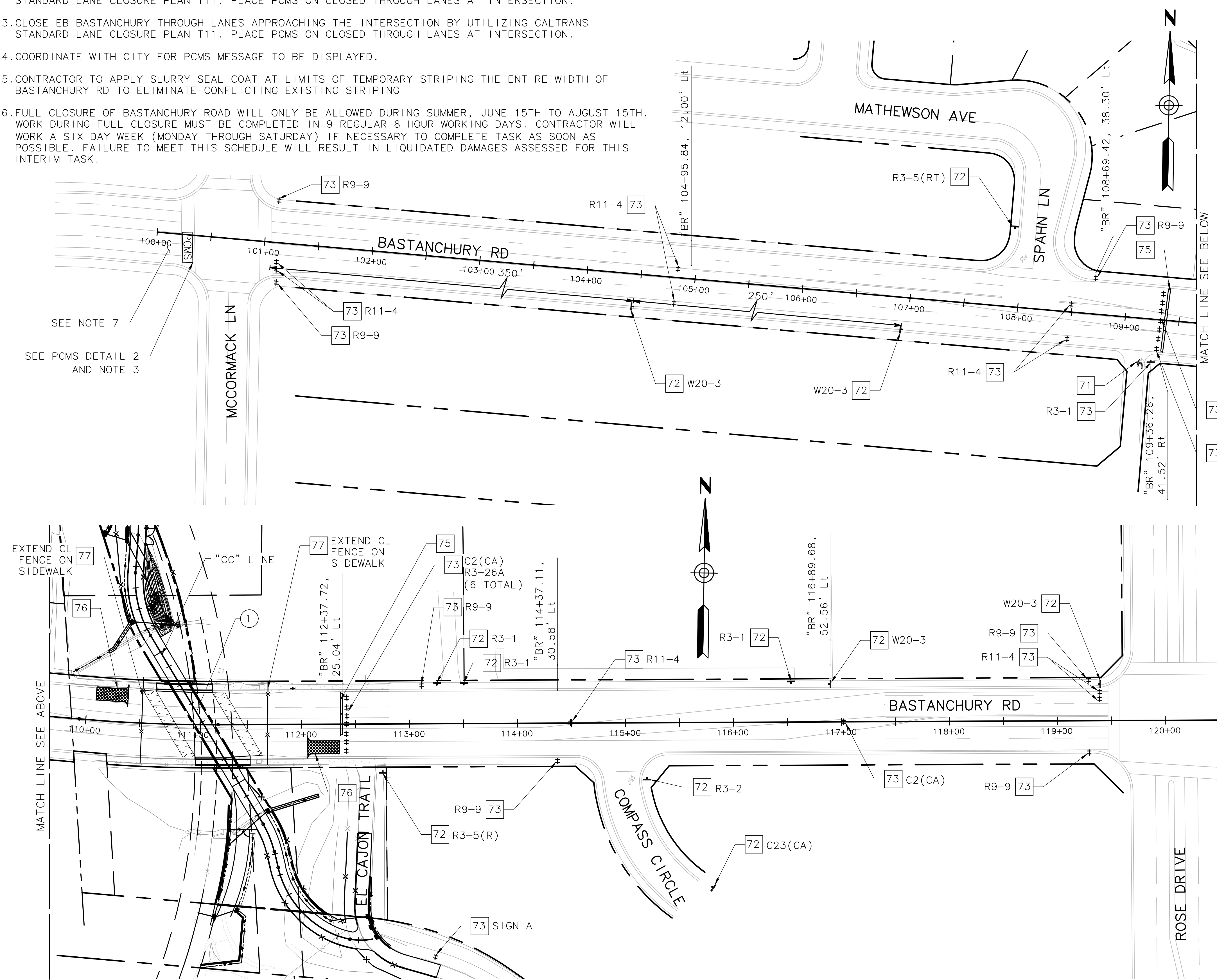
DE-1

33 OF 81

NOTES

- 1.FOR THE TEMPORARY CLOSURE OF BASTANCHURY ROAD WILL BE REQUIRED TO CONSTRUCT LIMITS OF WORK NOTED. FOR BASTANCHURY ROAD CLOSURE DETOUR SEE DE-1 SHEET.
- 2.CLOSE WB BASTANCHURY THROUGH LANES APPROACHING THE INTERSECTION BY UTILIZING CALTRANS STANDARD LANE CLOSURE PLAN T11. PLACE PCMS ON CLOSED THROUGH LANES AT INTERSECTION.
- 3.CLOSE EB BASTANCHURY THROUGH LANES APPROACHING THE INTERSECTION BY UTILIZING CALTRANS STANDARD LANE CLOSURE PLAN T11. PLACE PCMS ON CLOSED THROUGH LANES AT INTERSECTION.
- 4.COORDINATE WITH CITY FOR PCMS MESSAGE TO BE DISPLAYED.
- 5.CONTRACTOR TO APPLY SLURRY SEAL COAT AT LIMITS OF TEMPORARY STRIPING THE ENTIRE WIDTH OF BASTANCHURY RD TO ELIMINATE CONFLICTING EXISTING STRIPING
- 6.FULL CLOSURE OF BASTANCHURY ROAD WILL ONLY BE ALLOWED DURING SUMMER, JUNE 15TH TO AUGUST 15TH. WORK DURING FULL CLOSURE MUST BE COMPLETED IN 9 REGULAR 8 HOUR WORKING DAYS. CONTRACTOR WILL WORK A SIX DAY WEEK (MONDAY THROUGH SATURDAY) IF NECESSARY TO COMPLETE TASK AS SOON AS POSSIBLE. FAILURE TO MEET THIS SCHEDULE WILL RESULT IN LIQUIDATED DAMAGES ASSESSED FOR THIS INTERIM TASK.

- 7.CONTRACTOR SHALL CLOSE NO. 2 EASTBOUND THROUGH TRAFFIC AND LEAVE NO. 1 THROUGH AND LEFT TURN LANE OPEN USING PROPER MERGING TAPER.
- 8.CONTRACTOR SHALL CLOSE NO. 2 WESTBOUND THROUGH TRAFFIC AND LEAVE NO. 1 THROUGH AND LEFT TURN LANE OPEN USING PROPER MERGING TAPER.



CONSTRUCTION THIS STAGE

- 1 CONSTRUCT PORTION OF BOX CULVERT PER PLAN

CONSTRUCTION NOTES

- 71 TEMPORARY PAVEMENT MARKING
- 72 INSTALL TEMPORARY SIGN PER PLAN
- 73 INSTALL TEMPORARY BARRICADE PER PLAN
- 75 TEMPORARY RAILING (TYPE K)
- 76 CONSTRUCTION ENTRANCE
- 77 INSTALL TEMPORARY FENCE PER PLAN

TRAFFIC SIGNS

SIDEWALK
CLOSED

ROAD
CLOSED

ONLY

R9-9

C2(CA)

R3-5(RT)

ROAD
CLOSED
AHEAD

R9-9

R3-1

R3-2

WESTBOUND
BASTANCHURY RD
CLOSED AHEAD

ROAD
WORK
AHEAD

U
TURN

SIGN A
(36" X 24")
BLACK ON ORANGE

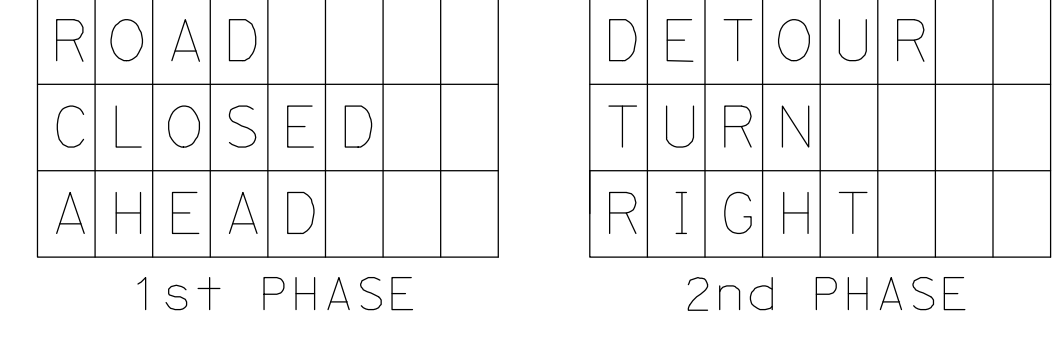
SEE PCMS DETAIL 1
AND NOTE 2

SEE NOTE 8

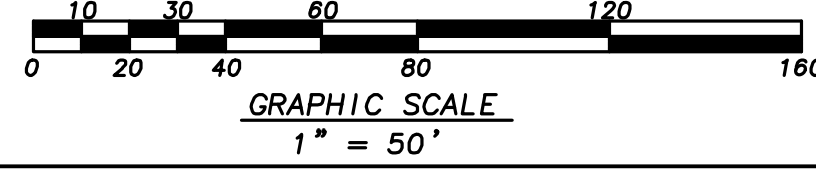
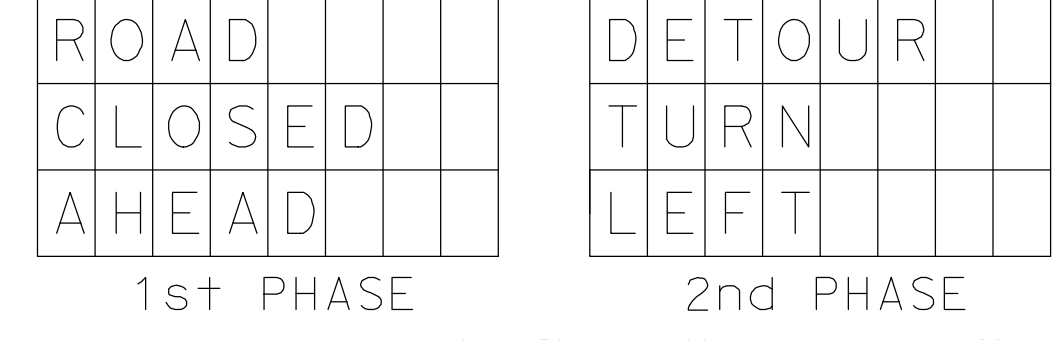
ROAD CLOSED
TO
THRU TRAFFIC

R11-4

PCMS DETAIL 1



PCMS DETAIL 2



APPR.	DATE	DESCRIPTION	MARK

PREPARED UNDER THE RESPONSIBLE CHARGE OF:

PROFESSIONAL ENGINEER
RAVI SHAH
No. C79183
Exp. 03-31-24
CIVIL
State of California

DATE

RAVI SHAH, P.E.

DESIGNED BY: RB

CHECKED BY: AE

DRAWN BY: PB

DRAWING NO.: OCLP_SEG02.dwg

FILE NAME: OCLP_SEG02.dwg

PLOT DATE: Wednesday, April 15, 2025

SCALE: AS SHOWN

County of Orange
PublicWorks

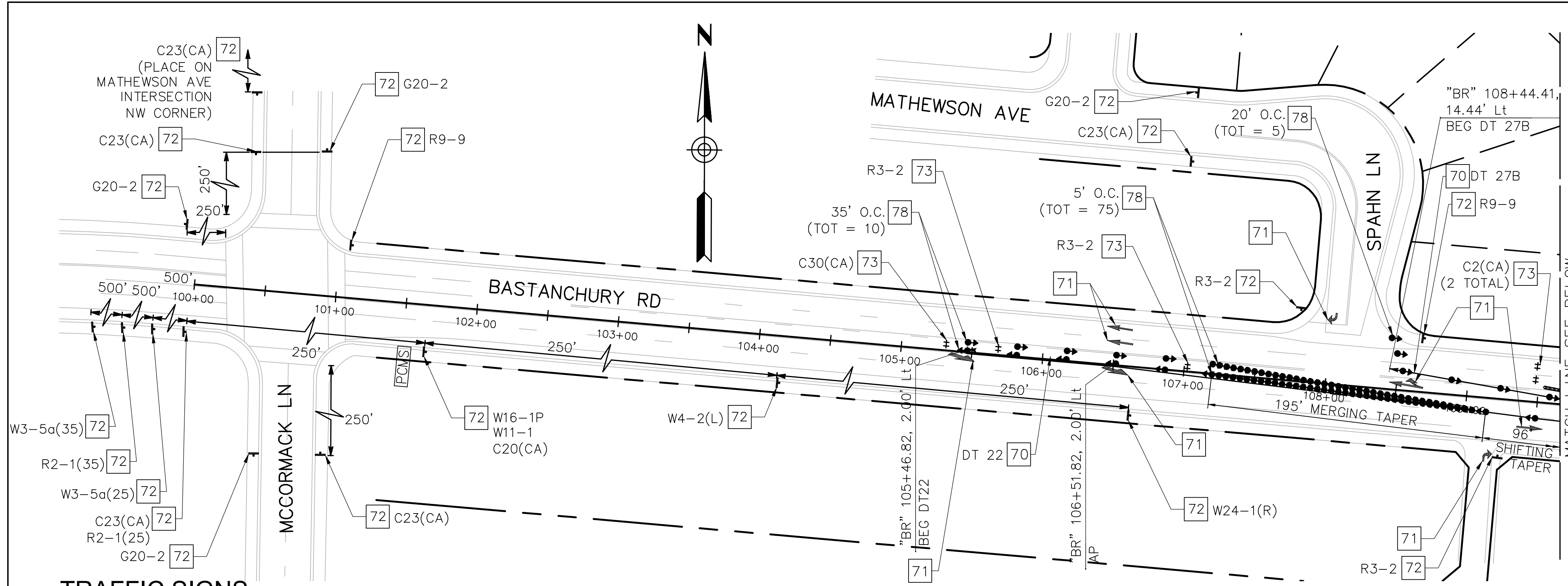
PREPARED BY:
MARK THOMAS

ORANGE COUNTY
BIKEWAY LOOP
SEGMENT D

STAGE
CONSTRUCTION
PLAN

SHEET
**PHASE 1
SC-02**

35 OF 81



TRAFFIC SIGNS

R9-9

C2(CA)

R3-5(R)

W20-3

R3-1

R3-2

SIGN A
(36" X 24")
BLACK ON ORANGE

C23(CA)

C38(CA) MOD

G20-2

W4-2(R)

W4-2(L)

C20(CA)

W24-1(R)

W24-1(L)

W11-1

W16-1P

C30(CA)

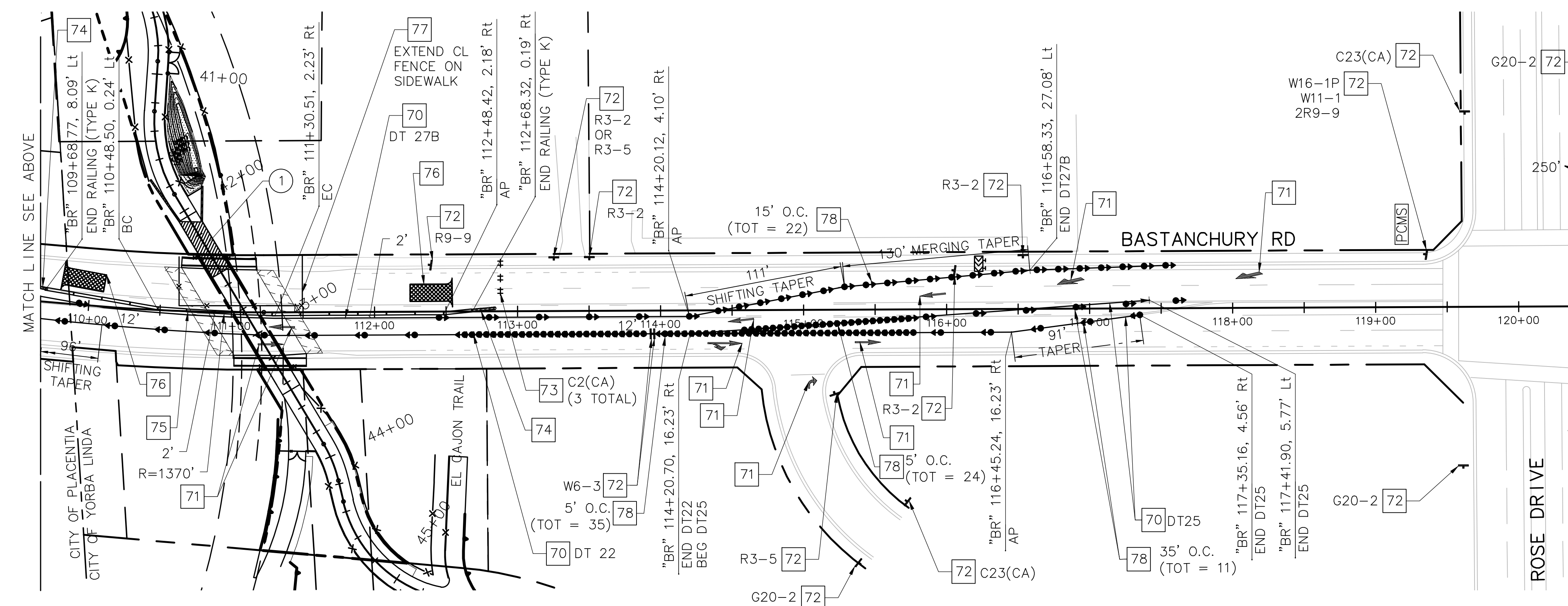
C20(CA)

W3-5a(35)

R2-1(35)

W3-5a(25)

R2-1(25)



NOTES

- ONE (1) LANE IN EACH DIRECTION SHALL REMAIN OPEN AT ALL TIMES, UNLESS OTHERWISE NOTED AND APPROVED BY THE ENGINEER.
- REDUCE SPEED THROUGH AREAS UNDER CONSTRUCTION TO 25 MILES PER HOUR.
- DRIVEWAY ACCESS IS TO BE MAINTAINED AT ALL TIMES, UNLESS OTHERWISE APPROVED BY ENGINEER.
- ALL TEMPORARY STRIPING AND TEMPORARY PAVEMENT MARKINGS SHALL BE TAPE UNLESS OTHERWISE NOTED.
- EXACT LOCATION & POSITION OF CONSTRUCTION SIGNS SHALL BE SET BY THE RESIDENT ENGINEER AND APPROVED BY THE ENGINEER.
- ALL SIGN CODES ARE FEDERAL SIGN CODES UNLESS OTHERWISE DESIGNATED AS CALIFORNIA SIGN CODES.
- TEMP RAILING (TYPE K) SHALL BE PLACED A MINIMUM OF 2' FROM EDGE OF EXCAVATION.
- COVER ALL EXISTING CONFLICTING SIGNS.
- REMOVE ALL CONFLICTING EXISTING STRIPING
- CHANNELIZER SPACING IS 20' O.C. ON STRAIGHT SECTIONS AND 17' O.C. ON TAPERS, EXCEPT AS NOTED
- CONSTRUCT PORTION OF BOX CULVERT PER PLAN.
- CONTRACTOR TO APPLY SLURRY SEAL COAT AT LIMITS OF TEMPORARY STRIPING THE ENTIRE WIDTH OF BASTANCHURY RD TO ELIMINATE CONFLICTING EXISTING STRIPING

LEGEND

CONSTRUCTION AREA (THIS STAGE)

RIGHT OF WAY

LIMIT OF TEMPORARY TRAFFIC STRIPE DETAIL

CHANNELIZER (SURFACE MOUNTED)

TEMPORARY RAILING (TYPE K)

TEMPORARY CRASH CUSHION (ABSORB 350)

TYPE III BARRICADE

CONSTRUCTION SIGN

TYPE III ARROW

TYPE IV ARROW

PORTABLE CHANGEABLE MESSAGE SIGN

FLASHING ARROW BOARD

TYPE VI ARROW

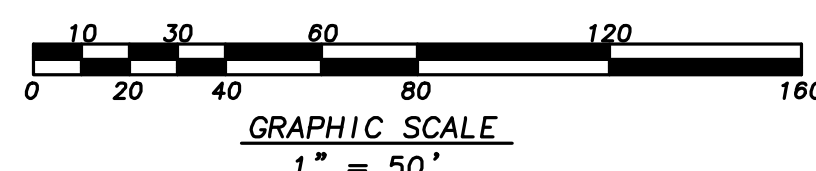
TYPE VII ARROW

CONSTRUCTION THIS STAGE

- CONSTRUCT PORTION OF BOX CULVERT PER PLAN

CONSTRUCTION NOTES

- TEMPORARY STRIPING
- TEMPORARY PAVEMENT MARKING
- INSTALL TEMPORARY SIGN PER PLAN
- INSTALL TEMPORARY BARRICADE PER PLAN
- TEMPORARY CRASH CUSHION SYSTEM
- TEMPORARY RAILING (TYPE K)
- CONSTRUCTION ENTRANCE
- INSTALL TEMPORARY FENCE PER PLAN
- TEMPORARY CHANNELIZERS (SURFACE MOUNTED)



COUNTY OF ORANGE
CALIFORNIA

MARK	DESCRIPTION	DATE	APPR.

PREPARED UNDER THE RESPONSIBLE CHARGE OF:

RAVI SHAH, P.E.
No. 03-31-24
Exp. 03-31-24
CIVIL
STATE OF CALIFORNIA

DESIGNED BY:	CHECKED BY:	DRAWN BY:	FILE NAME:	SCALE:
			OCLP_SEGD_SC-01.dwg	AS SHOWN
			OCLP_SEGD_SC-01.dwg	

County of Orange
PublicWorks

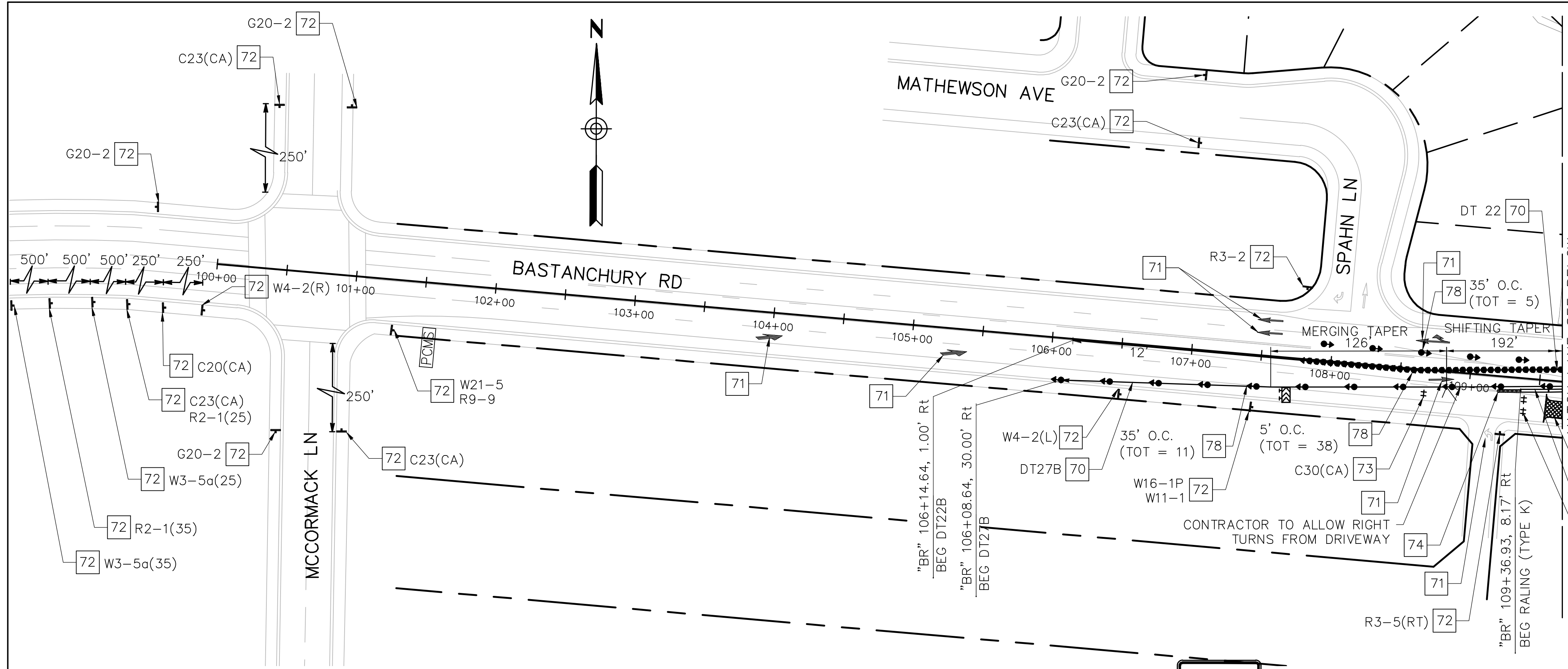
PREPARED BY: **MARK THOMAS**

ORANGE COUNTY
BIKEWAY LOOP
SEGMENT D

**STAGE
CONSTRUCTION
PLAN**

SHEET
**PHASE 2
SC-01**

34 OF 81



NOTE

1. CONTRACTOR TO APPLY SLURRY SEAL COAT AT LIMITS OF TEMPORARY STRIPING THE ENTIRE WIDTH OF BASTANCHURY RD TO ELIMINATE CONFLICTING EXISTING STRIPING.

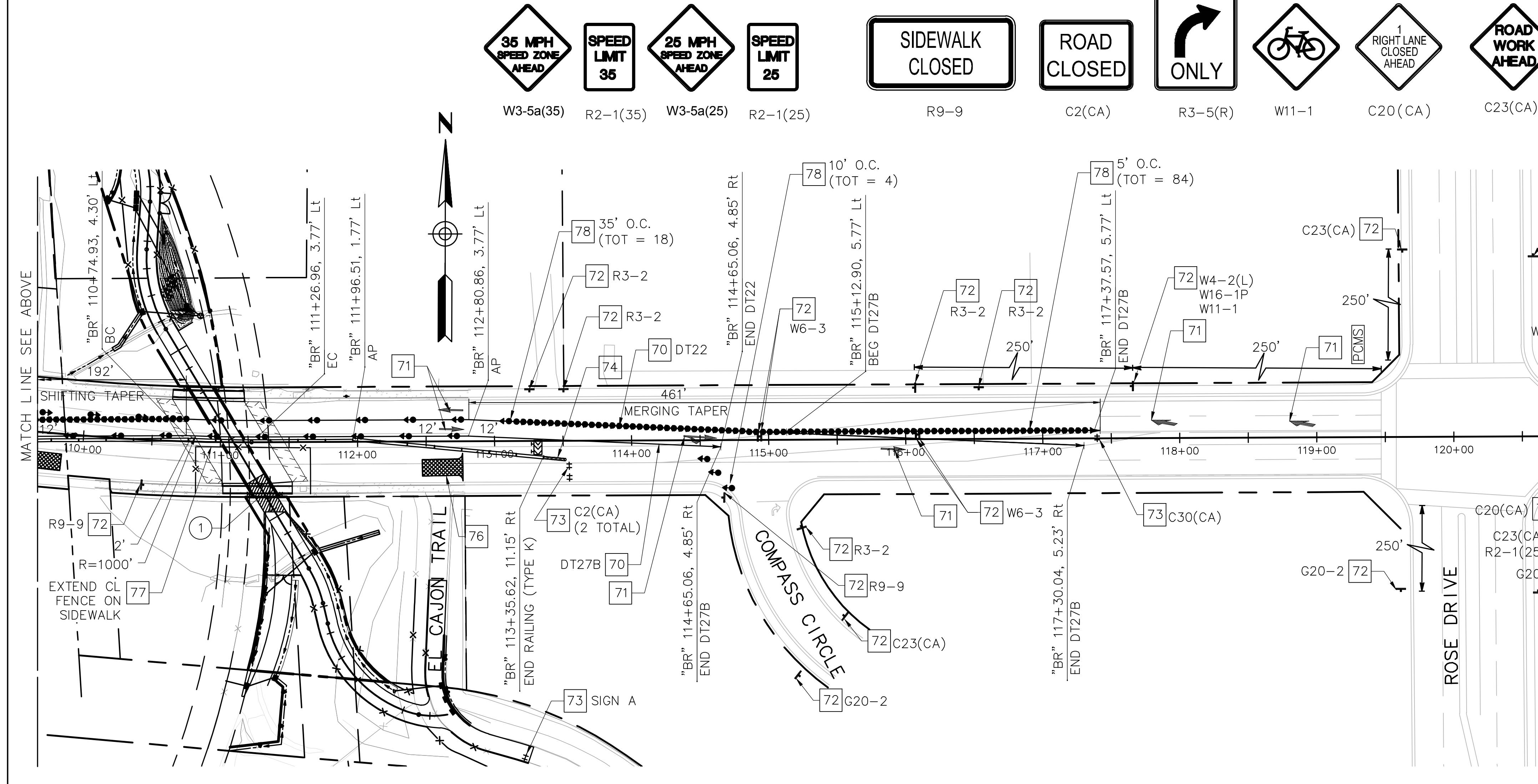
2. REDUCE SPEED THROUGH AREAS UNDER CONSTRUCTION TO 25 MILES PER HOUR.

CONSTRUCTION THIS STAGE

- 1. CONSTRUCT PORTION OF BOX CULVERT PER PLAN

CONSTRUCTION NOTES

- 70 TEMPORARY STRIPING
 - 71 TEMPORARY PAVEMENT MARKING
 - 72 INSTALL TEMPORARY SIGN PER PLAN
 - 73 INSTALL TEMPORARY BARRICADE PER PLAN
 - 74 TEMPORARY CRASH CUSHION SYSTEM
 - 75 TEMPORARY RAILING (TYPE K)
 - 76 CONSTRUCTION ENTRANCE
 - 77 INSTALL TEMPORARY FENCE PER PLAN
 - 78 TEMPORARY CHANNELIZERS (SURFACE MOUNTED)
- C2(CA)
(2 TOTAL)



TRAFFIC SIGNS

35 MPH
SPEED ZONE
AHEAD

SPEED
LIMIT
35

25 MPH
SPEED ZONE
AHEAD

SPEED
LIMIT
25

SIDEWALK
CLOSED

ROAD
CLOSED

ONLY

1
RIGHT LANE
CLOSED
AHEAD

ROAD
WORK
AHEAD

LANE
CLOSED

ROAD
CLOSED
AHEAD

W3-5a(35)

R2-1(35)

W3-5a(25)

R2-1(25)

R9-9

C2(CA)

R3-5(R)

W11-1

C20(CA)

C23(CA)

C30(CA)

W20-3

R3-1

R3-2

W4-2(L)

W4-2(R)

W24-1(R)

W24-1(L)

END
ROAD WORK

G20-2

SHARE
THE
ROAD

W16-1P

U
TURN

C38(CA) MOD

WESTBOUND
BASTANCHURY RD
CLOSED AHEAD

SIGN A
(36" X 24")
BLACK ON ORANGE

0 10 20 30 40 60 80 100 120 140 160

GRAPHIC SCALE

1" = 50'

PREPARED UNDER THE RESPONSIBLE CHARGE OF:

DATE

DESIGNED BY: RUI

CHECKED BY: XE

DRAWN BY: PB

County of Orange

PublicWorks

DRAWING NO.: OCLP_SEGD_SC-03.dwg

FILE NAME: OCLP_SEGD_SC-03.dwg

PLOT DATE: Wednesday, April 16, 2025

SCALE: AS SHOWN

PREPARED BY: MARK THOMAS

ORANGE COUNTY
BIKEWAY LOOP
SEGMENT D

STAGE
CONSTRUCTION
PLAN

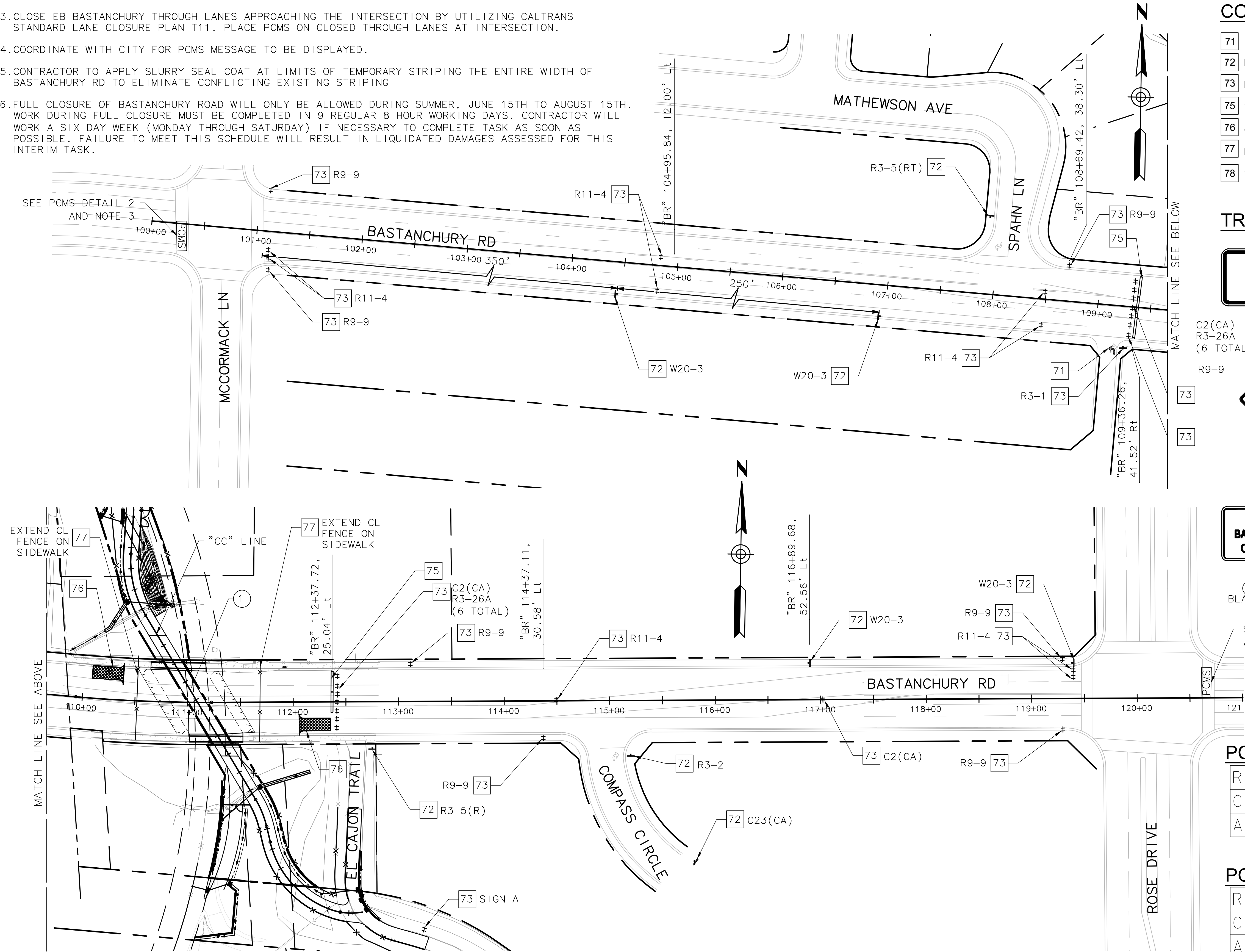
SHEET
PHASE 3
SC-03

36 OF 81

Page 27 of 34

NOTES

- 1.FOR THE TEMPORARY CLOSURE OF BASTANCHURY ROAD WILL BE REQUIRED TO CONSTRUCT LIMITS OF WORK NOTED. FOR BASTANCHURY ROAD CLOSURE DETOUR SEE DE-1 SHEET.
- 2.CLOSE WB BASTANCHURY THROUGH LANES APPROACHING THE INTERSECTION BY UTILIZING CALTRANS STANDARD LANE CLOSURE PLAN T11. PLACE PCMS ON CLOSED THROUGH LANES AT INTERSECTION.
- 3.CLOSE EB BASTANCHURY THROUGH LANES APPROACHING THE INTERSECTION BY UTILIZING CALTRANS STANDARD LANE CLOSURE PLAN T11. PLACE PCMS ON CLOSED THROUGH LANES AT INTERSECTION.
- 4.COORDINATE WITH CITY FOR PCMS MESSAGE TO BE DISPLAYED.
- 5.CONTRACTOR TO APPLY SLURRY SEAL COAT AT LIMITS OF TEMPORARY STRIPING THE ENTIRE WIDTH OF BASTANCHURY RD TO ELIMINATE CONFLICTING EXISTING STRIPING
- 6.FULL CLOSURE OF BASTANCHURY ROAD WILL ONLY BE ALLOWED DURING SUMMER, JUNE 15TH TO AUGUST 15TH. WORK DURING FULL CLOSURE MUST BE COMPLETED IN 9 REGULAR 8 HOUR WORKING DAYS. CONTRACTOR WILL WORK A SIX DAY WEEK (MONDAY THROUGH SATURDAY) IF NECESSARY TO COMPLETE TASK AS SOON AS POSSIBLE. FAILURE TO MEET THIS SCHEDULE WILL RESULT IN LIQUIDATED DAMAGES ASSESSED FOR THIS INTERIM TASK.



CONSTRUCTION THIS STAGE

- 1 CONSTRUCT PORTION OF BOX CULVERT PER PLAN

CONSTRUCTION NOTES

- 71 TEMPORARY PAVEMENT MARKING
- 72 INSTALL TEMPORARY SIGN PER PLAN
- 73 INSTALL TEMPORARY BARRICADE PER PLAN
- 75 TEMPORARY RAILING (TYPE K)
- 76 CONSTRUCTION ENTRANCE
- 77 INSTALL TEMPORARY FENCE PER PLAN
- 78 TEMPORARY CHANNELIZERS (SURFACE MOUNTED)

TRAFFIC SIGNS

SIDEWALK
CLOSED

ROAD
CLOSED

ONLY

R9-9

C2(CA)

R3-5(RT)

ROAD
CLOSED
AHEAD

W20-3

R3-1

R3-2

WESTBOUND
BASTANCHURY RD
CLOSED AHEAD

SIGN A
(36" X 24")
BLACK ON ORANGE

ROAD
WORK
AHEAD

C23(CA)

U
TURN

C38(CA) MOD

ROAD CLOSED
TO
THRU TRAFFIC

R11-4

PCMS DETAIL 1

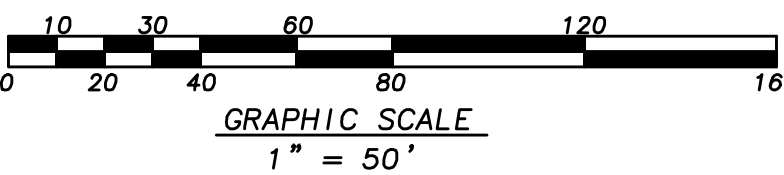
ROAD			
CLOSED			
AHEAD			
1st PHASE			

DETOUR			
TURN			
RIGHT			
2nd PHASE			

PCMS DETAIL 2

ROAD			
CLOSED			
AHEAD			
1st PHASE			

DETOUR			
TURN			
LEFT			
2nd PHASE			



MARK	DESCRIPTION	DATE	APPR

PREPARED UNDER THE RESPONSIBLE CHARGE OF:

PROFESSIONAL ENGINEER
No. 03-31-24
Exp. 03-31-24
CIVIL
COUNTY OF CALIFORNIA

Ravi Shah, P.E.

JUNE 24, 2022

DESIGNED BY: RUI

CHECKED BY: XE

DRAWN BY: PB

DRAWING NO.: OCLP_SEG02_SC-02.dwg

FILE NAME: OCLP_SEG02_SC-02.dwg

PLOT DATE: Friday, June 24, 2022

SCALE: AS SHOWN

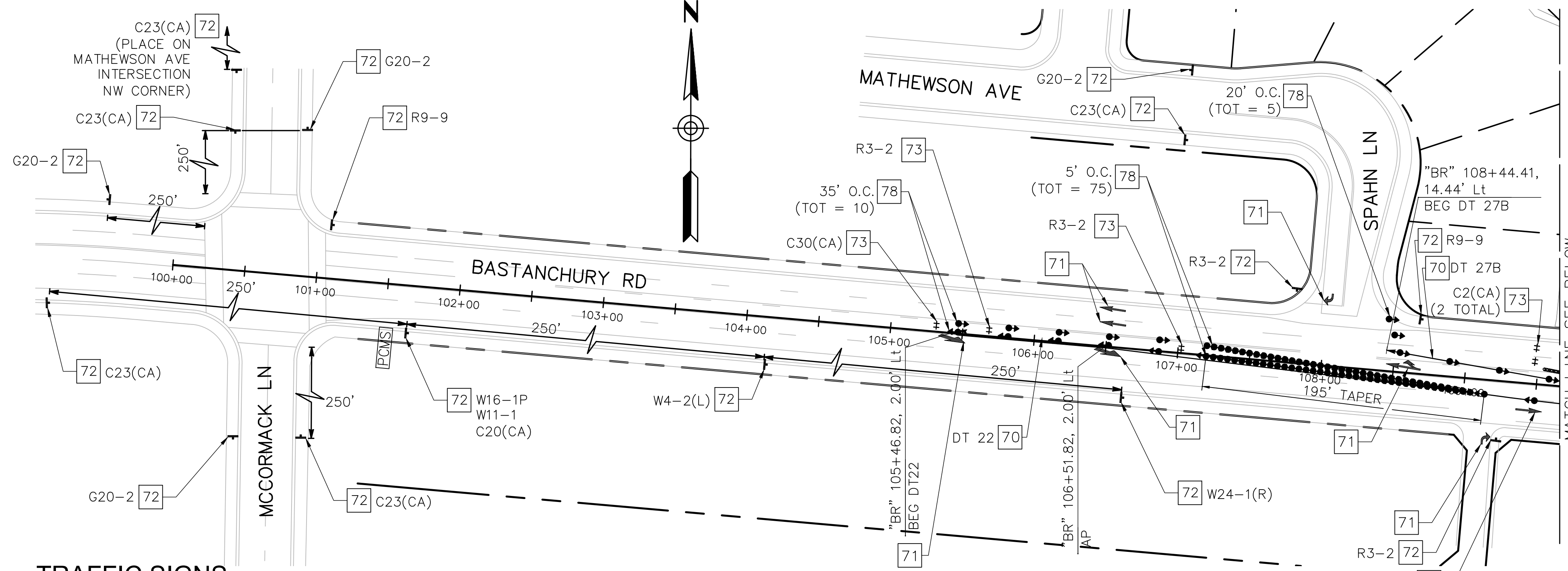
County of Orange
PublicWorks

PREPARED BY: MARK THOMAS

ORANGE COUNTY
BIKEWAY LOOP
SEGMENT D

STAGE
CONSTRUCTION
PLAN

SHEET
PHASE 1
SC-02



TRAFFIC SIGNS

SIDEWALK CLOSED

R9-9

ROAD CLOSED

C2(CA)

ONLY

R3-5(R)

ROAD CLOSED AHEAD

W20-3

R3-1

R3-2

WESTBOUND BASTANCHURY RD CLOSED AHEAD

SIGN A (36" X 24") BLACK ON ORANGE

ROAD WORK AHEAD

C23(CA)

U TURN

C38(CA) MOD

END ROAD WORK

G20-2

W4-2(R)

W4-2(L)

1 RIGHT LANE CLOSED AHEAD

C20(CA)

W24-1(R)

W24-1(L)

W11-1

SHARE THE ROAD

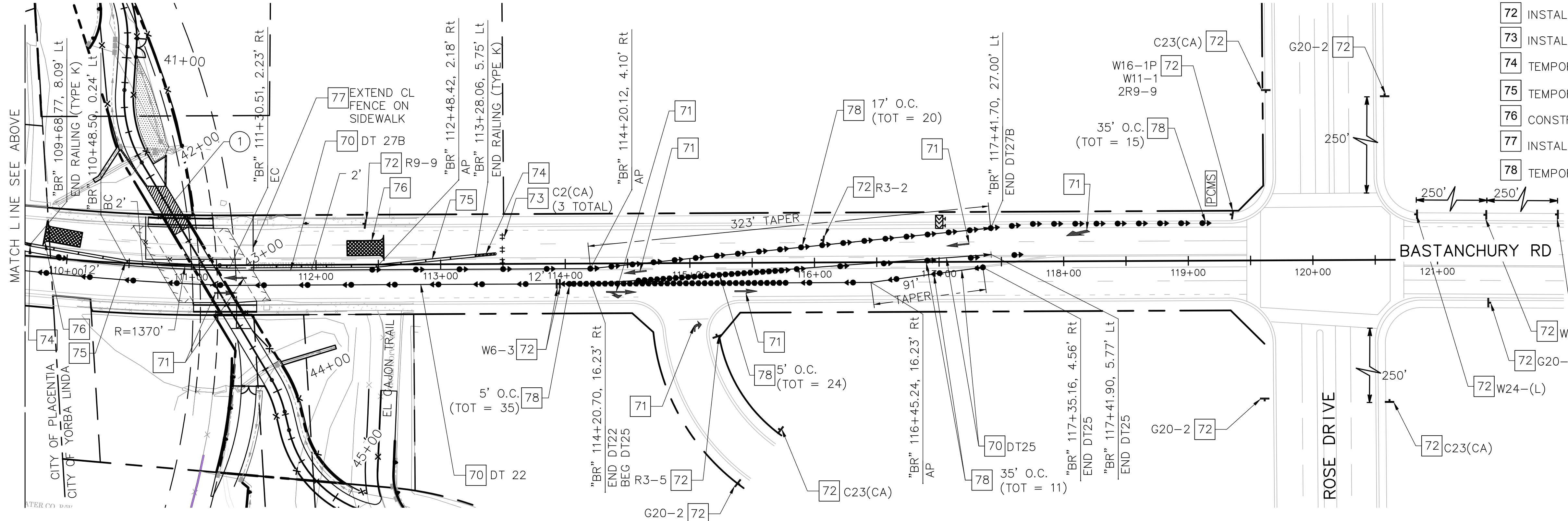
W16-1P

LANE CLOSED

C30(CA)

CONSTRUCTION THIS STAGE

- 1. CONSTRUCT PORTION OF BOX CULVERT PER PLAN



NOTES

- ONE (1) LANE IN EACH DIRECTION SHALL REMAIN OPEN AT ALL TIMES, UNLESS OTHERWISE NOTED AND APPROVED BY THE ENGINEER.
- REDUCE SPEED THROUGH AREAS UNDER CONSTRUCTION TO 25 MILES PER HOUR.
- DRIVEWAY ACCESS IS TO BE MAINTAINED AT ALL TIMES, UNLESS OTHERWISE APPROVED BY ENGINEER.
- ALL TEMPORARY STRIPING AND TEMPORARY PAVEMENT MARKINGS SHALL BE TAPE UNLESS OTHERWISE NOTED.
- EXACT LOCATION & POSITION OF CONSTRUCTION SIGNS SHALL BE SET BY THE RESIDENT ENGINEER AND APPROVED BY THE ENGINEER.
- ALL SIGN CODES ARE FEDERAL SIGN CODES UNLESS OTHERWISE DESIGNATED AS CALIFORNIA SIGN CODES.
- TEMP RAILING (TYPE K) SHALL BE PLACED A MINIMUM OF 2' FROM EDGE OF EXCAVATION.
- COVER ALL EXISTING CONFLICTING SIGNS.
- REMOVE ALL CONFLICTING EXISTING STRIPING
- CHANNELIZER SPACING IS 20' O.C. ON STRAIGHT SECTIONS AND 17' O.C. ON TAPERS, EXCEPT AS NOTED
- CONSTRUCT PORTION OF BOX CULVERT PER PLAN.
- CONTRACTOR TO APPLY SLURRY SEAL COAT AT LIMITS OF TEMPORARY STRIPING THE ENTIRE WIDTH OF BASTANCHURY RD TO ELIMINATE CONFLICTING EXISTING STRIPING

LEGEND

CONSTRUCTION AREA (THIS STAGE)

RIGHT OF WAY

LIMIT OF TEMPORARY TRAFFIC STRIPE DETAIL

CHANNELIZER (SURFACE MOUNTED)

TEMPORARY RAILING (TYPE K)

TEMPORARY CRASH CUSHION (ABSORB 350)

TYPE III BARRICADE

CONSTRUCTION SIGN

TYPE III ARROW

TYPE IV ARROW

TYPE VI ARROW

TYPE VII ARROW

PORTABLE CHANGEABLE MESSAGE SIGN

FLASHING ARROW BOARD

CONSTRUCTION NOTES

- 70 TEMPORARY STRIPING
- 71 TEMPORARY PAVEMENT MARKING
- 72 INSTALL TEMPORARY SIGN PER PLAN
- 73 INSTALL TEMPORARY BARRICADE PER PLAN
- 74 TEMPORARY CRASH CUSHION SYSTEM
- 75 TEMPORARY RAILING (TYPE K)
- 76 CONSTRUCTION ENTRANCE
- 77 INSTALL TEMPORARY FENCE PER PLAN
- 78 TEMPORARY CHANNELIZERS (SURFACE MOUNTED)



MARK	DESCRIPTION	DATE	APPR.

PREPARED UNDER THE RESPONSIBLE CHARGE OF:

Ravi Shah, P.E.

JUNE 24, 2022

DESIGNED BY: Ravi Shah

CHECKED BY: AE

DRAWN BY: PB

COUNTY OF ORANGE PUBLIC WORKS

DRAWING NO.: OCLP_SEG01.dwg

FILE NAME: OCLP_SEG01.dwg

SCALE: AS SHOWN

DATE: Friday, June 17, 2022

PREPARED BY: MARK THOMAS

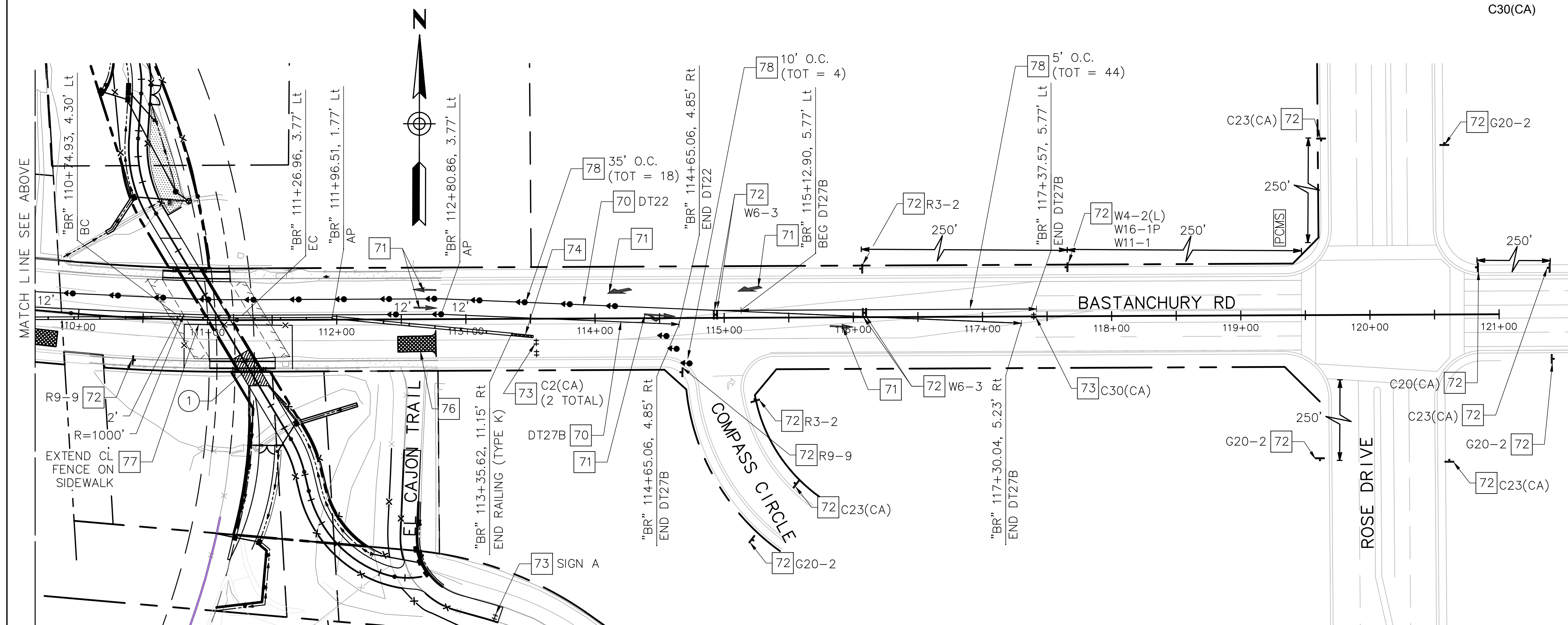
ORANGE COUNTY BIKEWAY LOOP SEGMENT D

STAGE CONSTRUCTION PLAN

SHEET

PHASE 2

SC-01



**SHARE
THE
ROAD**

SHEET
PHASE 3
SC-03



To: City of Yorba Linda Traffic Commission
From: Deputy Ryan Reneau
Date: April 10, 2025
RE: March 2025 Non-Reported Traffic Incidents

Listed below are the traffic collision that occurred in the City of Yorba Linda during the month of March 2025 for which a report was not taken.

*****STATISTICS PRESENTED IN THIS REPORT ARE UNOFFICIAL AND SUBJECT TO CHANGE UPON COMPLETION OF THE NATIONAL INCIDENT BASED REPORTING SYSTEM CERTIFICATION PROCESS BY THE ORANGE COUNTY SHERIFF'S DEPARTMENT*****

Total: 23

Incident Date	Location
03/31/2025 17:12	La Palma Ave // Gypsum Canyon Rd
03/31/2025 17:33	Yorba Linda Blvd // Imperial Hwy
03/27/2025 17:59	20605 Yorba Linda Blvd
03/25/2025 13:19	Village Center Dr // Yorba Linda Blvd
03/23/2025 15:58	18700 Yorba Linda Blvd
03/21/2025 20:34	Buena Vista Ave // Van Buren St
03/21/2025 19:24	Bastanchury Rd // Valley View Ave
03/18/2025 14:31	19034 Rockwood Dr
03/17/2025 13:20	19655 Yorba Linda Blvd
03/17/2025 12:22	4061 Pepper Ave
03/15/2025 08:56	19655 Yorba Linda Blvd
03/14/2025 10:54	Lakeview Ave // Yorba Linda Blvd
03/12/2025 17:07	18421 Imperial Hwy
03/12/2025 14:46	4536 Valley View Ave
03/11/2025 09:52	Valley View Ave // Yorba Linda Blvd
03/11/2025 08:28	19900 Bastanchury Rd
03/09/2025 18:15	Fairmont Blvd // Village Center Dr
03/09/2025 14:49	Village Center Dr // Yorba Linda Blvd

03/07/2025 15:50	Plumosa Dr // Lemon Dr
03/07/2025 15:25	Yorba Linda Blvd // Stoneheaven Dr
03/06/2025 16:57	19762 Yorba Linda Blvd
03/03/2025 13:13	16961 Imperial Hwy
03/03/2025 07:14	Imperial Hwy // Yorba Linda Blvd



To: City of Yorba Linda Traffic Commission
From: Deputy Ryan Reneau
Date: April 10, 2025
RE: March 2025 Reported Traffic Collisions

Listed below are the traffic collision that occurred in the City of Yorba Linda during the month of March 2025 for which a report was taken.

*****STATISTICS PRESENTED IN THIS REPORT ARE UNOFFICIAL AND SUBJECT TO CHANGE UPON COMPLETION OF THE NATIONAL INCIDENT BASED REPORTING SYSTEM CERTIFICATION PROCESS BY THE ORANGE COUNTY SHERIFF'S DEPARTMENT*****

Total: 19

DR#	Incident Date	Location	Property Damage
25-011642	03/31/2025 16:13	Bastanchury Rd // Imperial Hwy	No
25-011603	03/31/2025 12:07	Bastanchury Rd // Rose Dr	Light Pole
25-011110	03/27/2025 13:29	La Palma Ave // Via Del Rio	Light Pole
25-011011	03/26/2025 16:27	Yorba Linda Blvd // Valley View	No
25-010768	03/25/2025 07:21	Yorba Linda Blvd // Kellogg Dr	No
25-010463	03/22/2025 18:17	Yorba Linda Blvd // Dorinda Rd	No
25-010209	03/20/2025 20:55	Fairmont Blvd // Fairmont Conn	Street Signs
25-010192	03/20/2025 17:34	Bastanchury Rd // Lakeview Ave	No
25-009918	03/18/2025 17:50	18527 Yorba Linda Blvd	No
25-009774	03/17/2025 17:26	El Cajon Ave // Valley View Ave	Street Sign
25-009259	03/13/2025 14:57	Yorba Linda Blvd // Avenida Adobe	No
25-009267	03/13/2025 14:11	Yorba Linda Blvd // Valley View Ave	No
25-008951	03/11/2025 09:50	4756 Valley View Ave	No
25-008893	03/10/2025 18:33	19900 Bastanchury Rd	Tree / Fence
25-008356	03/06/2025 15:57	Richfield Rd // Buena Vista Ave	No
25-008176	03/05/2025 08:54	Yorba Linda Blvd // Village Center Dr	No
25-008068	03/04/2025 12:55	4472 Avenida De Las Estrellas	Light Pole
25-008048	03/04/2025 11:26	Yorba Linda Blvd // Imperial Hwy	No
25-008028	03/04/2025 09:52	Fairmont Blvd // Oak Meadow Dr	No

2025 YORBA LINDA TRAFFIC

		JAN	FEB	MAR	APR	MAY	JUN	JUL	AUG	SEP	OCT	NOV	DEC	TOTAL
C O L L I S I O N S	FATAL	0	0	0										0
	INJURY	9	7	10										26
	NON-INJURY	12	21	9										42
	DUI	1	5	1										7
	HIT & RUN	6	7	4										17
	NON-REPORTED	15	12	23										50
TOTAL CITES	HAZARDOUS	121	126	73										320
	NON-HAZARDOUS	94	101	93										288
DUI/ TRAFF ENF. UNIT	DUI ARRESTS	2	3	5										10
	HAZARDOUS	4	3	3										10
	NON-HAZARDOUS	6	4	3										13
TOTAL	DUI ARRESTS	6	11	8		Page 34 of 34								25